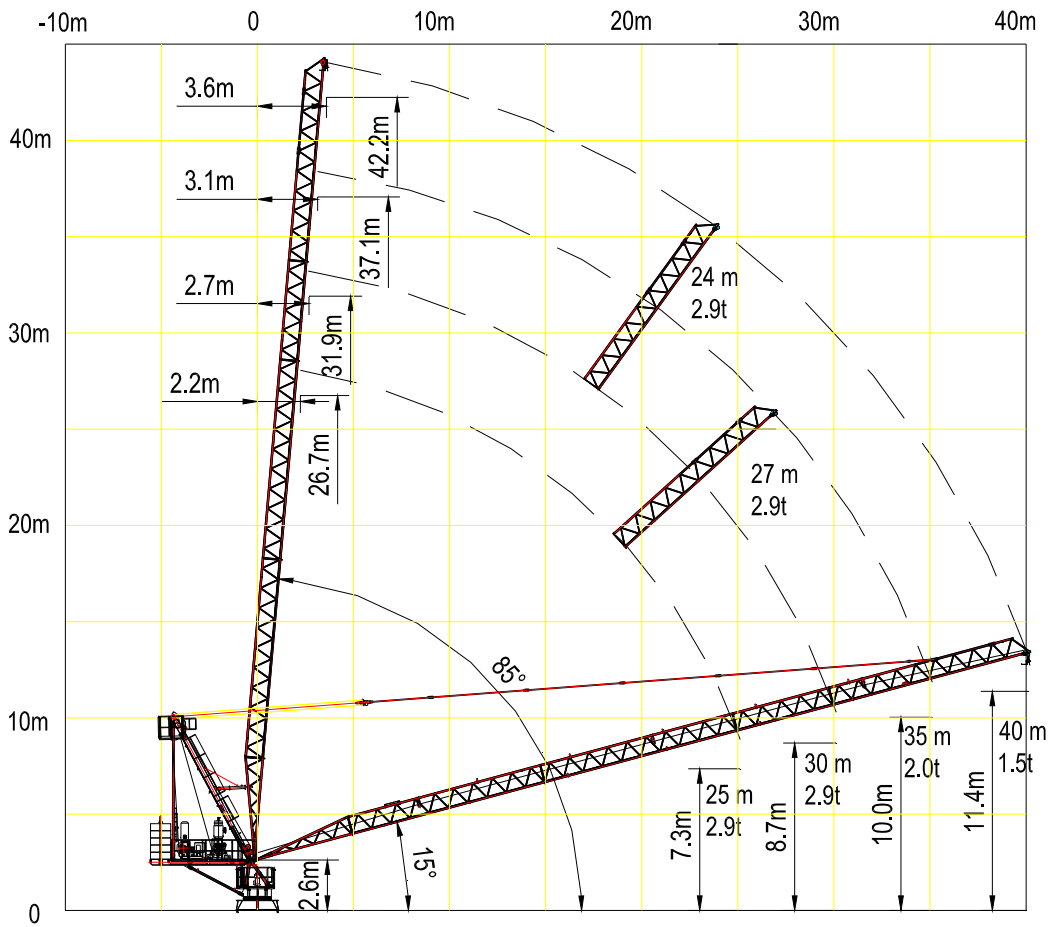


JL66-2.9 动臂式起重机
Luffing Crane

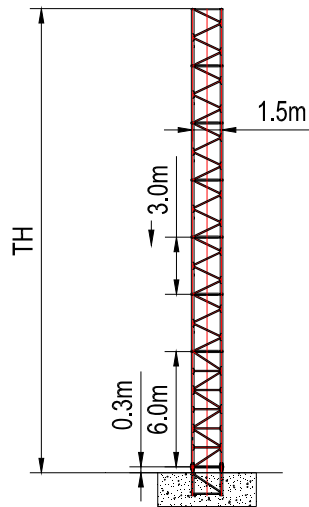
起重臂与平衡臂 Jib and Counter Jib



起重性能 Load Capacity

 40m	 3.6	15	20	24	30	35	40	m
		2.90	2.90	2.90	2.20	1.80	1.50	t
 35m	 3.1	15	20	27	30	35		m
		2.90	2.90	2.90	2.50	2.00		t
 30m	 2.7	15	20	28	30			m
		2.90	2.90	2.90	2.90			t
 25m	 2.2	15	20	25				m
		2.90	2.90	2.90				t

塔身 Tower



T17.14A

Tower configuration
塔身组成

Tower 塔身	Base mast 基础节	Mast 标节	Adapter 过渡节	HT (m) 高度(m)	Jib reach (m) 臂长 (m)
T17.14A	1	11	-	39 (m)	35-40 (m)
T17.14A	1	12	-	42 (m)	25-30 (m)

机构性能 Mechanisms Specification

机构性能 Mechanisms Specification								KW	
起升 Hoisting		24PFC15	m / min	40	30	20	400 m	15/15/4	
			t	1.5	2.2	2.9			
变幅 Luffing		18FVF22	min	15°~85° t=3.0				15	
回转 Slewing		5RVF3V	r / min	0.8				95 Nm	
行走 Travelling		3RTVF2	m / min	22				3 x 2	
电源 Power Supply			380V 50Hz / 440V 60Hz						
总功率 Necessary Electric Power			50 kVA						

*数据可能有所调整，以产品说明书为准。

*Relative parameter might be adjusted. Final parameter is subject to its instruction manual.