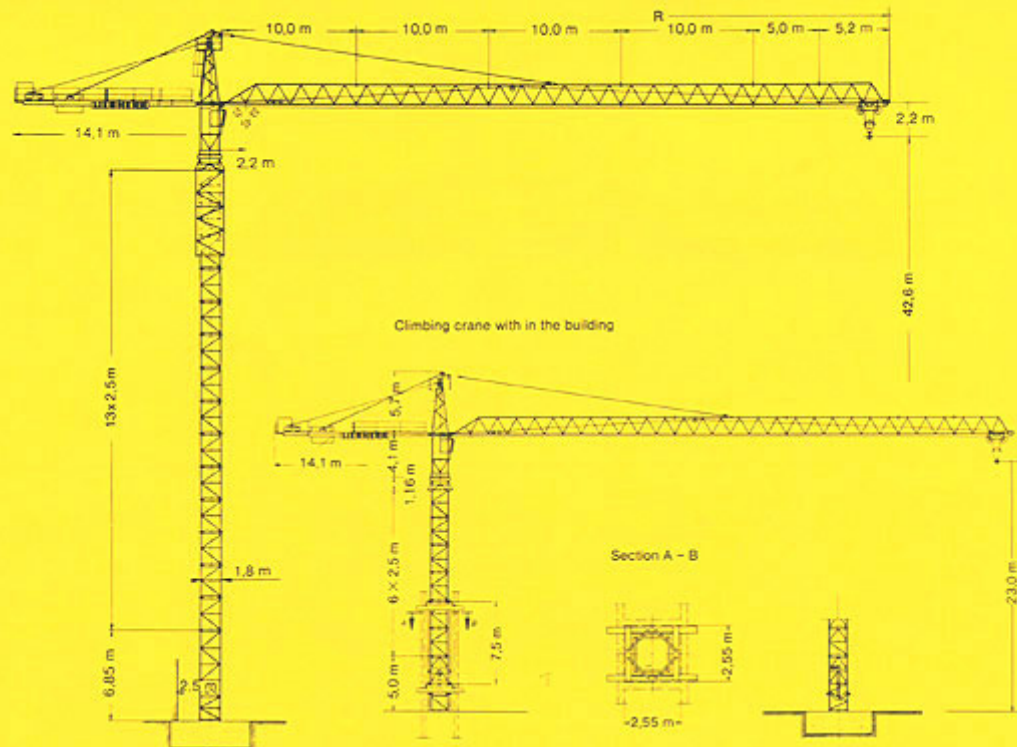
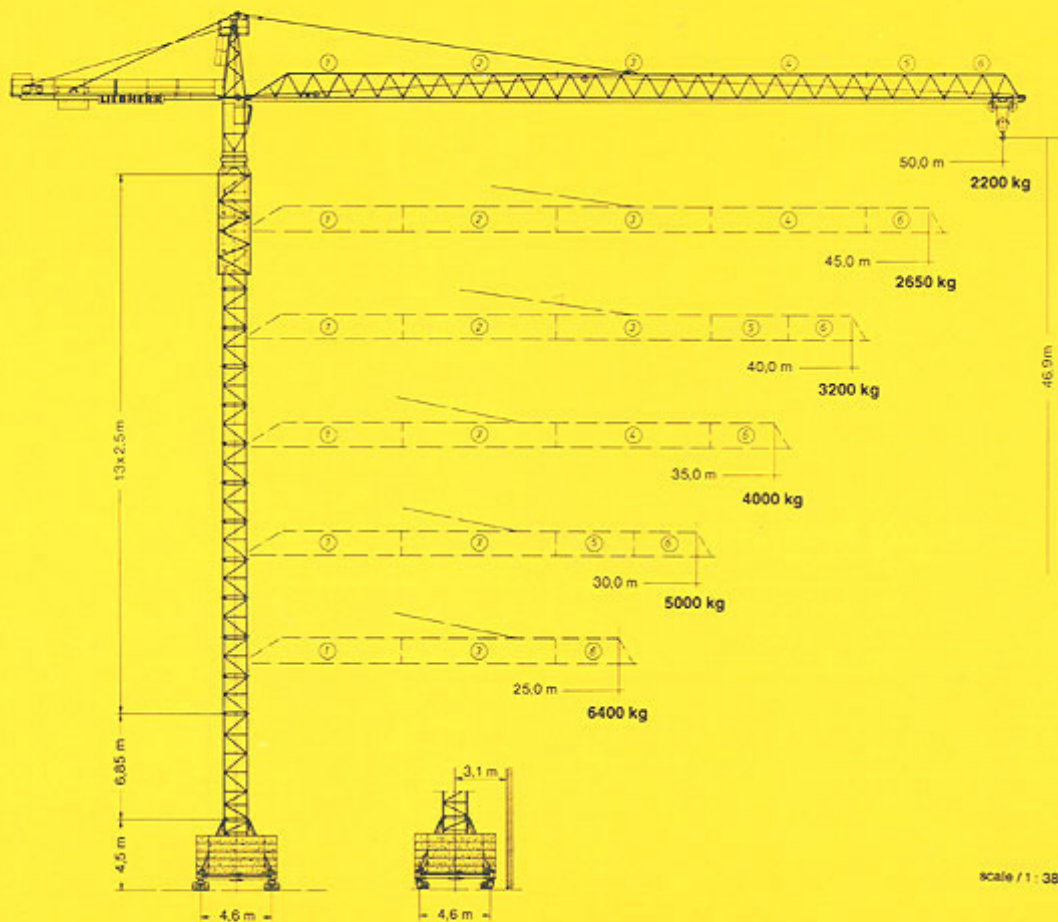


# 132 HC Tower Crane



## Hoisting height

Number of tower sections	Hoisting height	
	stationary type m	Traveling type m
0	10,1	14,4
1	12,6	16,9
2	15,1	19,4
3	17,6	21,9
4	20,1	24,4
5	22,6	26,9
6	25,1	29,4
7	27,6	31,9
8	30,1	34,4
9	32,6	36,9
10	35,1	39,4
11	37,6	41,9
12	40,1	44,4
13*	42,6	46,9

\* Lower guide section after erection. / Further hoist heights on request.

## Data for rail-going crane

Wheel gauge	4,6 m
Track gauge	4,6 m

Interior curve radius	8,5 m
Dead weight (max. hoisting height + radius)	48140 kg

## Radius and capacity

Length of jib (Slewing radius) m	max capacity m/kg	Radius and capacity											
		22,5	25,0	27,5	30,0	32,5	35,0	37,5	40,0	42,5	45,0	47,5	50,0
50,0 (R = 51,3)	2,15-17,2 8000	5890	5200	4650	4200	3820	3490	3200	2950	2730	2530	2350	2200
45,0 (R = 46,3)	2,15-17,7 8000	6090	5400	4840	4370	3960	3620	3330	3070	2840	2650		
40,0 (R = 41,3)	2,15-18,3 8000	6310	5600	5010	4520	4110	3760	3450	3200				
35,0 (R = 36,3)	2,15-19,1 8000	6620	5870	5270	4750	4320	4000						
30,0 (R = 31,3)	2,15-19,7 8000	6890	6110	5480	5000								
25,0 (R = 26,3)	2,15-20,3 8000	7180	6400										

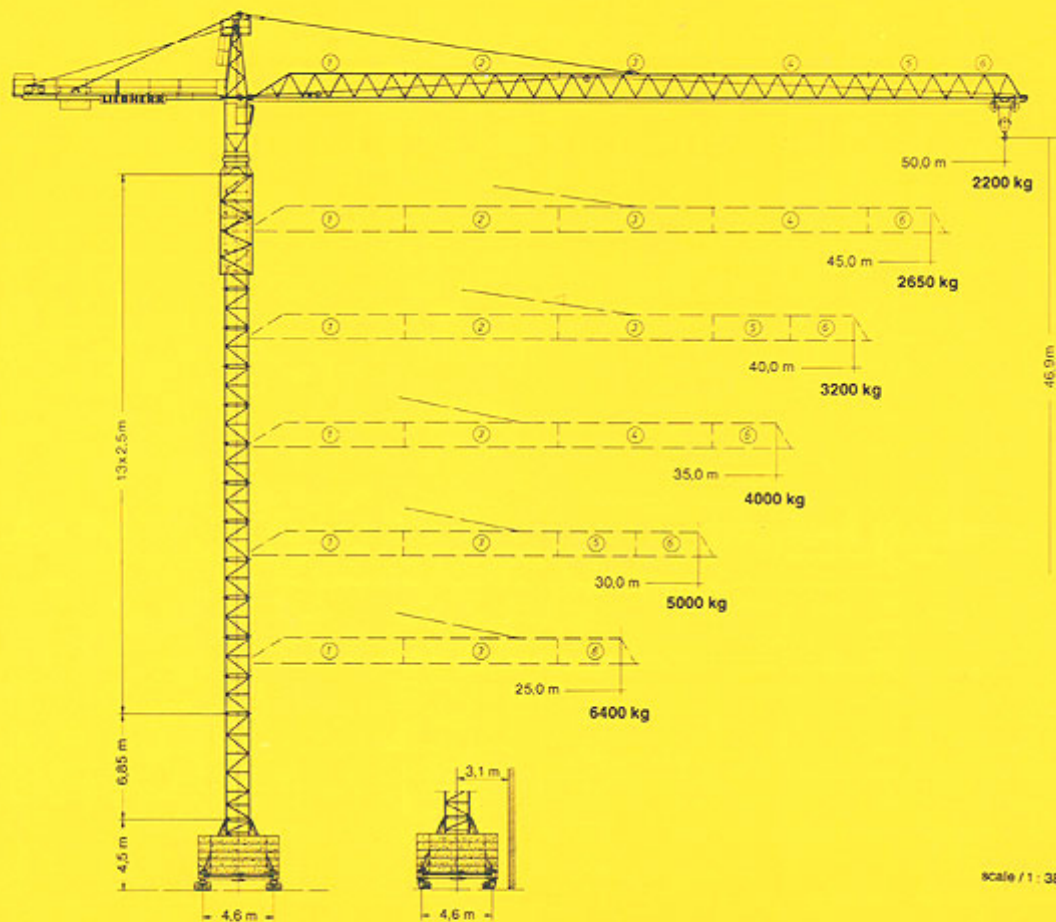
## Speeds

	0,9 st/min	6,3kW 2 x 6,3kW
	10,0 / 34,0 / 67,0 m/min	5,0 kW
	25,0 m/min	2 x 3,0 kW

Hoist gear	Gear	kg	m/min
30,0 kW, WW 240 RX 054 Elmag Hoisting height 79,0 m (2 layers)	1	8000	3,5
	2	8000	15,0
	3	4900	30,0
61,0 kW, WW 270 RX 063 Elmag, WSB Hoisting height with L.S- drum (5 layers) 164,0 m	1	3200	8,3
	2	3200	36,0
	3	1800	71,0
	1	8000	1,5-15,0
	2	4600	5,3-53,0
	3	2000	10,5-105,0

Total motor output with 30 kW-hoist gear 47,6(53,6)kW 61 kW-hoist gear 78,6(84,6)kW

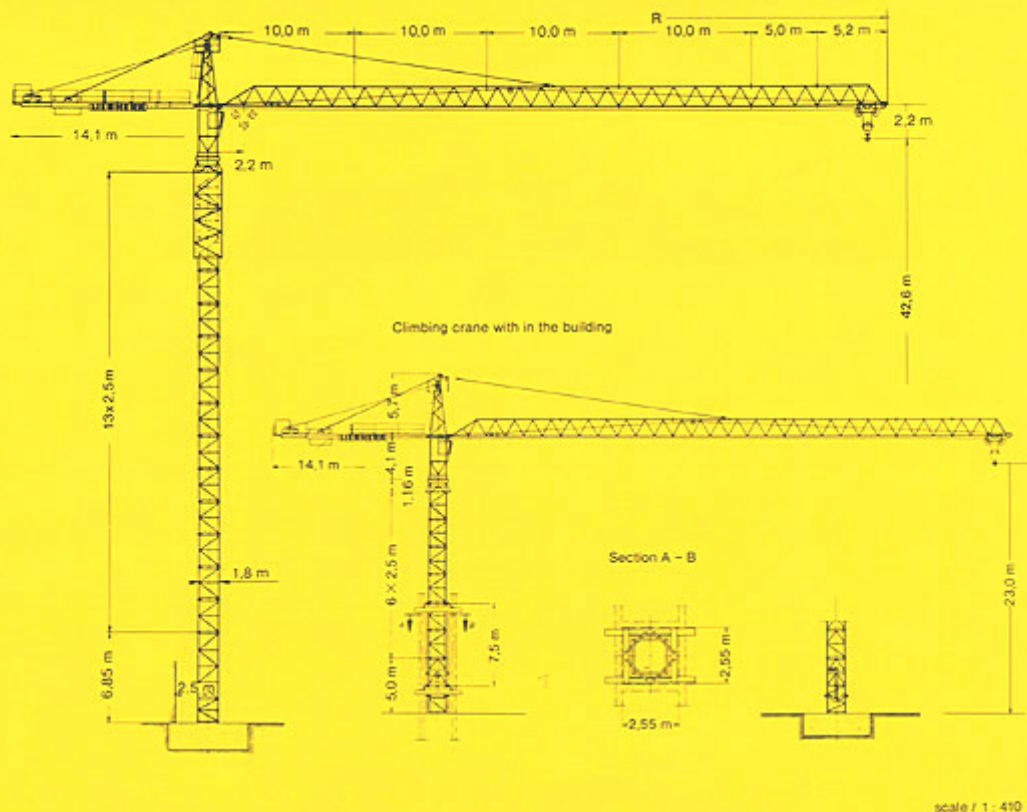
# 132 HC Tower Crane



Scale / 1 : 380

# Technical data

# HANYANG LIEBHERR



## Data for rail-going crane

Wheel gauge	4.6 m	Interior curve radius	8.5 m
Track gauge	4.6 m	Dead weight (max. hoisting height + radius)	48140 kg

## Radius and capacity

Length of jib (Slewing radius) m	max capacity m/kg	Radius and capacity											
		22.5	25.0	27.5	30.0	32.5	35.0	37.5	40.0	42.5	45.0	47.5	50.0
50.0 (R = 51.3)	2.15-17.2 8000	5890	5200	4650	4200	3820	3490	3200	2950	2730	2530	2350	2200
45.0 (R = 46.3)	2.15-17.7 8000	6090	5400	4840	4370	3960	3620	3330	3070	2840	2650		
40.0 (R = 41.3)	2.15-18.3 8000	6310	5600	5010	4520	4110	3760	3450	3200				
35.0 (R = 36.3)	2.15-19.1 8000	6620	5870	5270	4750	4320	4000						
30.0 (R = 31.3)	2.15-19.7 8000	6890	6110	5480	5000								
25.0 (R = 26.3)	2.15-20.3 8000	7180	6400										

## Hoisting height

Number of tower sections	Hoisting height	
	stationary type m	Traveling type m
0	10.1	14.4
1	12.6	16.9
2	15.1	19.4
3	17.6	21.9
4	20.1	24.4
5	22.6	26.9
6	25.1	29.4
7	27.6	31.9
8	30.1	34.4
9	32.6	36.9
10	35.1	39.4
11	37.6	41.9
12	40.1	44.4
13*	42.6	46.9

\* Lower guide section after erection. / Further hoist heights on request.

## Speeds

	0.9 sl/min	6.3kW 2 x 6.3kW
	10.0 / 34.0 / 67.0 m/min	5.0 kW
	25.0 m/min	2 x 3.0 kW

Hoist gear	Gear	kg	m/min
30,0 kW, WW 240 RX 054 Elmag Hoisting height 79,0m (2 layers)	1	8000	3,5
		8000	15,0
		4900	30,0
61,0 kW, WW 270 RX 083 Elmag, WSB Hoisting height with LS- drum (5 layers) 164,0 m	2	3200	8,3
		3200	36,0
		1800	71,0
	1	8000	1,5-15,0
	2	4600	5,3-53,0
	3	2000	10,5-105,0

Total motor output with 30 kW-hoist gear 47,6(53,6)kW 61 kW-hoist gear 78,6(84,6)kW