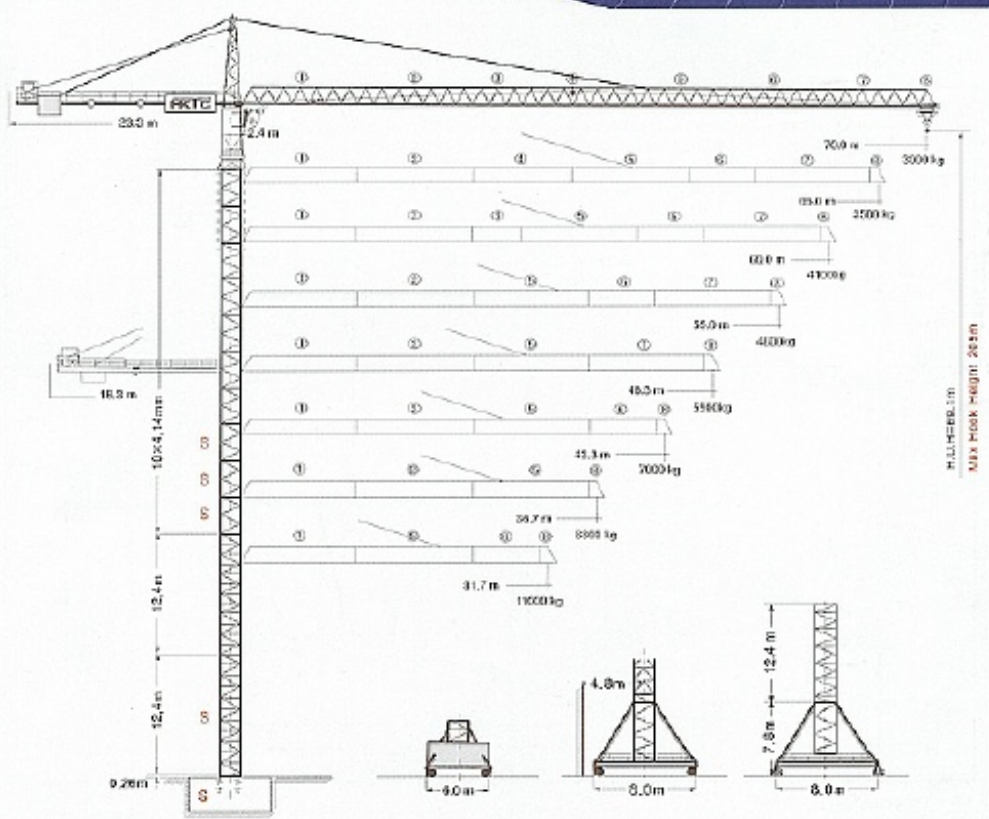


# 290HC 12

## 290HC 12 TOWER CRANE



### 290HC 12 / 65kW

Number of tower sections	Hoisting height		Hoisting height		Hoisting height
	m	m	m	m	
0	12,4	17,1	16,1	23,6	23,4
1	16,8	21,2	20,1	27,7	§ 32,5
2	20,7	25,4	24,3	31,8	§ 33,7
3	24,8	29,6	28,4	35,8	§ 40,8
4	29,0	33,7	32,5	40,0	45,0
5	33,1	37,8	36,7	44,1	49,1
6	37,3	41,9	40,8	48,2	53,2
7	41,4	46,1	45,0	52,4	57,4
8	45,5	50,2	49,1	56,5	61,5
9*	49,7	54,4	53,2	60,7	65,7
10*	-	-	57,3	-	69,9

\*§ = Tower section reinforced

## Data for rail-going crane

Wheel gauge	6.0 m or 8.0 m
Track gauge	6.0 m or 8.0 m
Interior curve radius (6m-undercarriage)	12.5 m

Interior curve radius (8m-undercarriage)	18.0 m
Dead weight (6m-undercarriage)	25000 kg
Dead weight (8m-undercarriage)	52000 kg

## Radius and capacity

Length of jib (Slewing radius) m	MAX. Capacity mt/kg	Radius and capacity																			
		25.0	28.0	31.7	34.0	36.7	38.0	40.0	42.0	43.3	45.0	48.3	51.0	53.0	55.0	57.0	60.0	62.0	65.0	67.0	70.0
70.0 (R=71.36)	2.2-16.1 12000	12000	6277	3050	7420	6785	6510	6130	5730	5570	5310	4870	4550	4300	4130	3850	3600	3540	3320	3150	3000
65.0 (R=66.36)	2.2-14.1 12000	12000	9700	8420	7770	7110	6620	6420	6000	5840	5573	5110	4780	4500	4350	4150	3890	3730	3500		
60.0 (R=61.36)	2.2-14.1 12000	11350	10150	8820	8140	7450	7160	6740	6390	6130	5880	5380	5030	4800	4580	4380	4100				
55.0 (R=56.36)	2.2-15.0 12000	12000	10280	9210	8500	7790	7480	7045	6650	6420	6130	5630	5270	5030	4800						
48.33 (R=49.7)	2.2-16.0 12000	12000	11670	9525	8880	8185	7620	7370	6990	6720	6420	5900									
43.33 (R=44.7)	2.2-17.0 12000	12000	11800	10610	9260	8480	8145	7680	7250	7000											
36.67 (R=38.0)	2.2-17.8 12000	10000	11530	10190	9600	8900															
31.67 (R=33.0)	2.2-16.3 12000	12000	12000	11100																	

## Speeds

	0.7 m/min	2x 8.3kW
	0 - 110 m/min	7.5kW
	25.0m/min with 8m-undercarriage	2x 7.5kW

\*Total motor output 100kW

Hoist gear	Gear	kg	m/min
65.0 kW, MW 281 JK423 Ertac, WSB Hoisting height 205m (6 layers)	1	12000	1.4/21.0
	2	5350	3.2/48.0
	3	2200	6.7/100.0

\*Total power requirement (with a simultaneity factor of 0.6) 91kW

## Technical data

## 290HC 12 TOWER CRANE

## 290HC 12 Packing List

Item	Quantity	Description	The lot cannot be used for the calculation of the smallest container volume.	Length m	Width m	Height m	Max weight kg	Total weight kg
1	2	Rail bogie with drive		1.03 (1.45)	0.92 (0.84)	0.95 (0.87)	1450 (1080)	2900 (2160)
2	2	Rail bogie without drive		1.37 (1.15)	0.62 (0.60)	0.95 (0.87)	1255 (800)	2510 (1600)
3	1	Support arm long		9.10 (11.95)	0.80 (0.82)	0.80 (0.80)	1650	(2200)
4	2	Support arm short		4.45 (5.85)	0.77 (0.65)	0.77 (0.77)	900 (1035)	1800 (2070)
5	242 242	Border support		5.46-5.40 (7.52-7.45)	0.11-0.18 (0.10-0.17)	0.16-0.38 (0.10-0.38)	175-626 366-912	1400 2356
6	4	Support strut		4.14 (6.55)	0.18 (0.22)	0.25 (0.25)	320 (600)	1320 (2400)
7	1	Guide section cpl		8.38	2.80	2.50		4070
8	1	Undercarriage lower section		3.73 (8.70)	2.62 (2.53)	2.62 (2.53)		2550 (2800)
9	10	Tower section		4.14	2.30	2.30	2260	20430
10	1	Slewing platform cpl. with ball slewing ring and ring support		6.24	2.74	2.57		9300
11	1	Tower head section		8.89	1.64	1.80		2580
12	1	Counter-jib head		9.10	2.42	0.92		3280
13	1	Counter-jib heel section and guying		8.44	1.77	0.92		2020
14	1	Intermediate counter-jib section		5.22	1.76	0.92		2530
15	1	Jib heel section and guying		12.02	1.84	1.96		2980
16	3	Intermediate jib section		12.02	1.63	1.87	2185 2070 1200	6435
17	2	Intermediate jib section		5.36 7.03	1.63	1.87	925 1015	1940
18	1	Intermediate jib section		10.36	1.63	1.87		1864
19	1	Jib head		2.21	1.64	1.14		330
20	1	Trolley		1.80	1.83	1.20		335
21	1	Base lower section		9.85 (12.42)	2.30 (2.30)	2.30 (2.30)		4380 (7550)
22	1	Platforms		5.00	1.50	2.00		2300
23	1	Hydraulic system, supporting and climbing cross members		2.10	1.25	1.00		800
24	2	Long tower section		12.42	2.3	2.3		5520
25	1	Hoist gear frame		2.96	2.28	1.64		3500
26	1	Crate with small parts, ropes and foundation angle irons		1.1	1.0	1.24		3000

**HKTC 한국타워크레인(주)**  
HanKook Tower Crane Co., Ltd.

■ 본사 : 경북 김천 중앙대입구 91-10 TEL : 053-230-0000 FAX : 053-230-0005 고객지원실 : 053-237-0000  
 ■ 서울사무소 : 서울 서초구 양재동 307 TEL : 02-570-0200 FAX : 02-570-1700  
 ■ Head Office : 81-18 (Jongno-3-gang) Oryunwon, Gyeongju, Gyeon TEL : +82-55-239-0000 FAX : +82-55-239-0005 Customer service center : +82-55-237-0000  
 ■ Seoul Office : 391 Yangjae-dong, Seocho-gu, Seoul, Korea TEL : +82-2-575-6262 FAX : +82-2-573-1765

www.gonkto.com