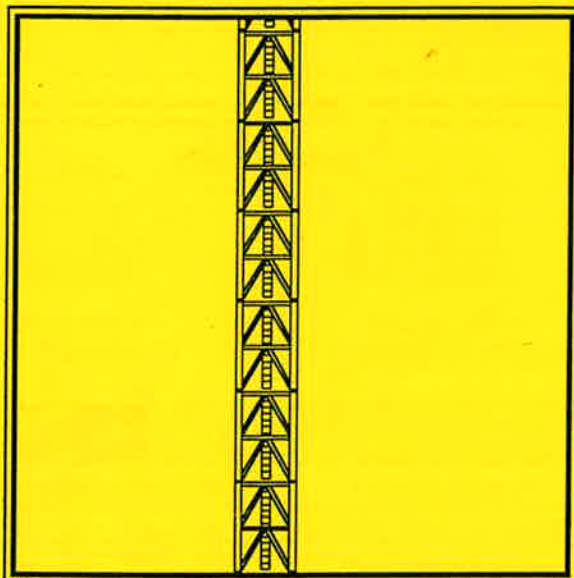


# M440D CONSTRUCTION TOWER CRANE



## Technical Data

**FAVELLE  
FAVCO**



A subsidiary of Muhibbah Engineering (M) BHD

# Radius & Capacity

BOOM LENGTH (m)	MINIMUM RADIUS (m)	MAX RADIUS FOR 50T	RADIUS (METRES) & CAPACITY (TONNES) (25 TONNE & 16 TONNE WINCHES & 2-FALL HOOK)																		
			10.0 (m)	15.0 (m)	20.0 (m)	25.0 (m)	30.0 (m)	32.5 (m)	35.0 (m)	37.5 (m)	40.0 (m)	42.5 (m)	45.0 (m)	47.5 (m)	50.0 (m)	52.5 (m)	55.0 (m)	57.5 (m)	60.0 (m)	62.5 (m)	65.0 (m)
68.8	6.0	-	25.0	22.5	19.5	17.2	15.0	13.7	12.6	11.3	10.2	9.2	8.3	7.6	6.9	6.1	5.5	4.9	4.3	3.6	2.7
64.2	5.3	-	30.6	26.3	23.0	20.0	16.9	15.2	13.6	12.4	11.2	10.2	9.3	8.4	7.6	6.9	6.3	5.7	4.8		
59.6	5.0	-	32.0	29.8	25.8	21.7	17.5	15.8	14.2	12.9	11.8	10.7	9.7	8.8	8.0	7.3	6.6				
55.0	4.4	-	44.0	41.0	29.8	22.8	18.1	16.3	14.6	13.2	12.0	11.0	10.0	9.3	8.5	8.0					
50.4	4.2	12.0	50.0	42.0	30.2	23.0	18.3	16.6	14.9	13.6	12.4	11.4	10.4	9.5							
45.8	3.9	13.0	50.0	42.3	30.6	23.5	18.7	17.0	15.4	14.1	12.8	11.7									
41.2	3.7	13.2	50.0	42.8	30.7	23.8	19.0	17.3	15.6	14.2	13.1										
36.6	3.3	13.3	50.0	43.3	30.8	24.0	19.4	17.7	16.1												
32.0	3.0	13.3	50.0	43.5	31.3	24.2	19.5														

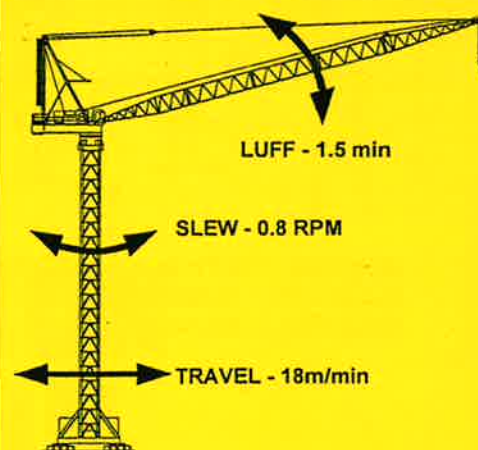
## Speeds

(Alternative Speed Configurations Available on Request)

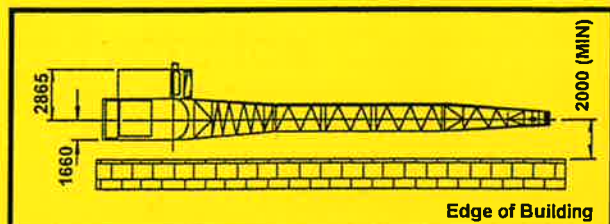
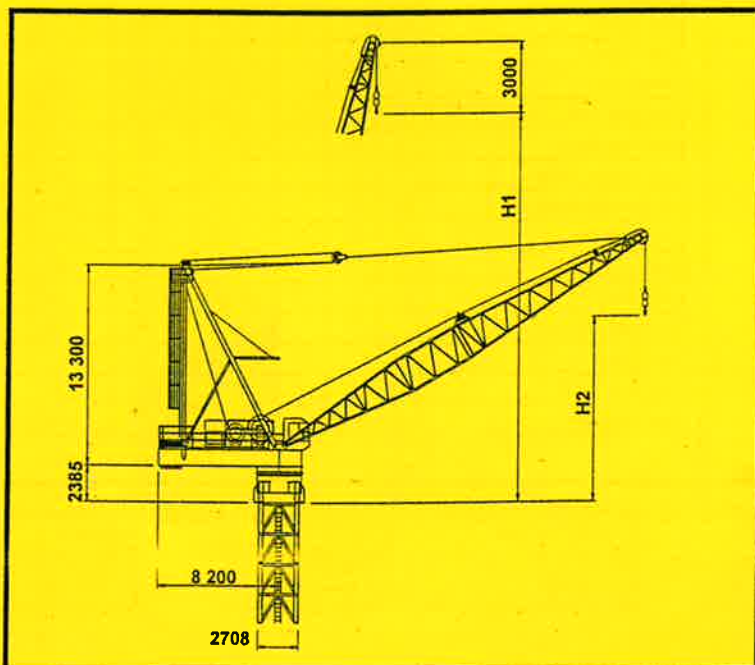
### M440D HOIST SPEED CURVES



### MOTION SPEEDS

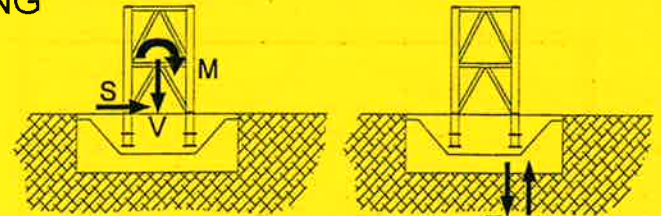
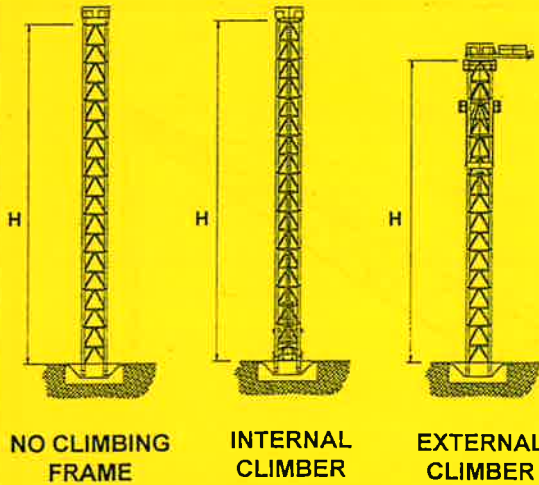


## Dimensions



MAXIMUM RADIUS (m)	BOOM LENGTH (m)	HOOK HEIGHT	
		H1 (m)	H2 (m)
65.0	68.8	68.6	18.6
60.0	64.2	64.0	17.5
55.0	59.6	59.4	16.3
52.5	55.0	54.8	15.2
47.5	50.4	50.2	14.1
42.5	45.8	45.6	12.1
40.0	41.2	41.0	11.5
35.0	36.6	36.4	9.5
30.0	32.0	31.8	8.7

CRANE ON BASE - FREE STANDING



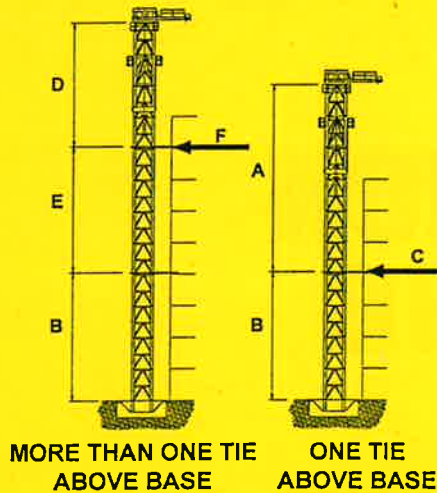
MAXIMUM VALUES AT ONE CORNER

FREESTANDING TOWER HEIGHTS AND FOUNDATION REACTIONS

TOWER	NO CLIMBING FRAME			INTERNAL CLIMBING FRAME			EXTERNAL CLIMBING FRAME			UNITS
	441	442	392	441	442	392	441	442	392	
H	40	48	40	40	48	40	36	44	36	(m)
M	885	1122	877	885	1122	877	930	1191	923	(mT)
V	176	188	178	191	203	193	187	199	189	(T)
S	26	29	25	26	29	25	29	33	29	(T)
T	301	369	341	305	373	345	312	392	351	(T)
U	225	292	261	222	288	257	236	310	273	(T)

In-service wind speeds up to 20 m/s & out-of-service wind speeds up to 42 m/s. Alternatives available upon request. For long (>55m) booms, heights shown are only attainable with extra counterweight.

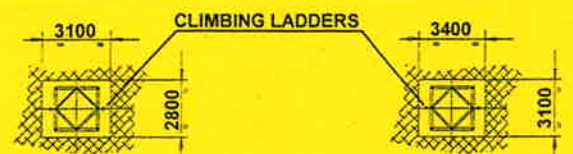
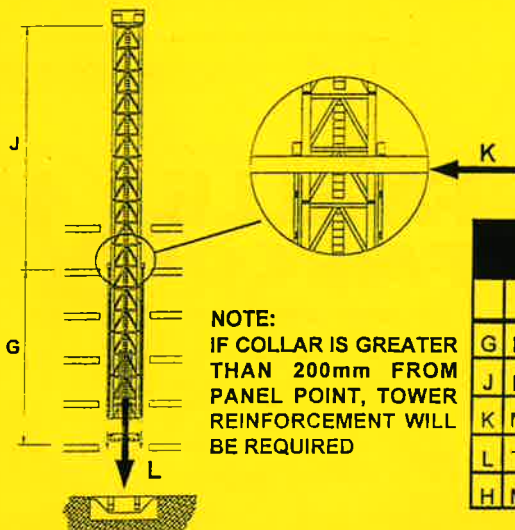
EXTERNAL CLIMBING



EXTERNAL CLIMBING

TOWER TYPES:		441	442	392	UNITS
ONE TIE ABOVE BASE					
A	MAX. HEIGHT ABOVE FIRST TIE	32	40	32	(m)
B	MIN HEIGHT TO FIRST TIE	16	20	20	(m)
C	MAX. HORIZONTAL TIE LOAD	104	111	88	(T)
MORE THAN ONE TIE BASE					
D	MAX. HEIGHT ABOVE TOP TIE	32	40	32	(m)
E	MIN HEIGHT BETWEEN TOP TIES	16	20	16	(m)
F	MAX. HORIZONTAL TIE LOAD	93	99	92	(T)

INTERNAL LADDER CLIMBING

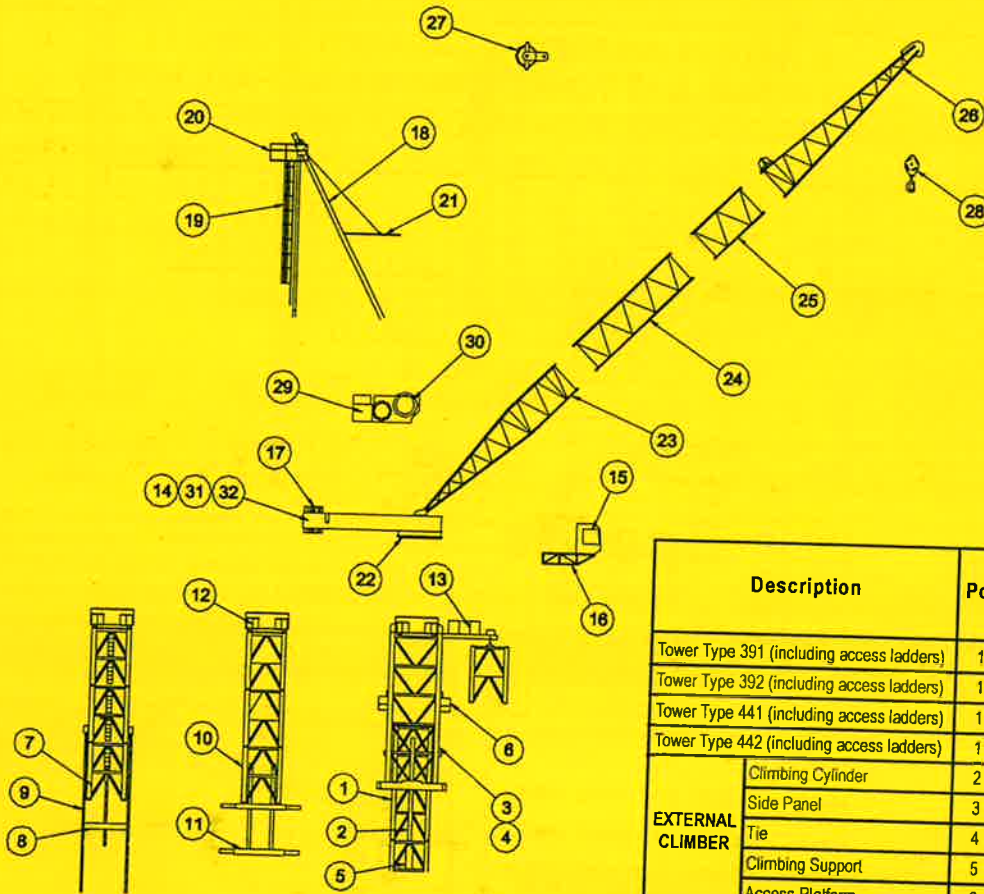


TYPE 391/392 CLIMBING DETAILS

TYPE 441/442 CLIMBING DETAILS

INTERNAL LADDER CLIMBING

TOWER TYPES		391	392	441	442	UNITS
G	MIN. DISTANCE BETWEEN COLLARS	10.5	12	12	12	(m)
J	MAX. DISTANCE ABOVE TOP TIE	33.5	28	28	36	(m)
K	MAXIMUM HORIZONTAL LOAD	98.0	71	71	90	(T)
L	TOTAL VERTICAL LOAD	156.0	193	191	203	(T)
H	MAX. FREESTANDING HEIGHT	44.0	40	40	48	(m)



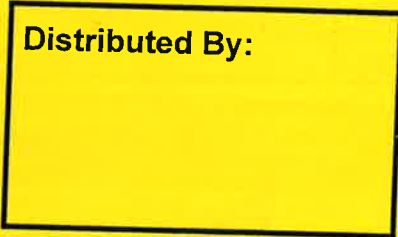
**INTERNAL CLIMBING (LADDER)**

**EXTERNAL CLIMBING (BEAM)**

**EXTERNAL CLIMBING**

Description	Pos	Qty	L Length (m)	W Width (m)	H Height (m)	Weight per item (kg)	
Tower Type 391 (including access ladders)	1	-	4.000	2.404	2.397	4000	
Tower Type 392 (including access ladders)	1	-	4.000	2.411	2.399	4900	
Tower Type 441 (including access ladders)	1	-	4.000	2.700	2.700	4100	
Tower Type 442 (including access ladders)	1	-	4.000	2.721	2.709	4400	
<b>EXTERNAL CLIMBER</b>	Climbing Cylinder	2	2	5.030	0.292	0.292	1500
	Side Panel	3	2	11.520	0.370	2.740	4973
	Tie	4	2	7.020	0.168	3.410	907
	Climbing Support	5	2	2.650	0.335	0.800	332
	Access Platform	6	1	3.550	1.073	1.235	199
<b>INTERNAL LADDER CLIMBER</b>	Bottom Climbing Tower (Inc. Cylinders)	7	1	4.000	2.709	2.721	9136
	Climbing Foot	8	1	2.728	0.610	0.880	1435
	Climbing Ladder	9	?	0.210	0.170	7.985	525
<b>EXTERNAL CLIMBER</b>	Bottom Climbing Tower	10	1	2.090	2.700	4.575	8509
	Climbing Beams	11	1	0.450	2.700	0.802	1630
Slew Mount	12	1	3.200	2.709	1.814	5050	
Monorail Beam & Trolley	13	1	7.430	1.680	1.400	1695	
Machinery Deck	14	1	9.825	3.320	1.492	12500	
Cabin	15	1	1.700	1.100	2.100	1200	
Cabin Support	16	1	4.000	1.335	1.325	330	
Counter-weights	17	5	2.390	0.200	2.000	7600	
Mast & Sheaves	18	1	14.000	0.800	3.220	5765	
Mast Ladder	19	1	11.220	0.975	0.800	305	
Mast Platform	20	1	2.475	1.450	0.940	208	
Boom Buffer	21	1	3.515	0.228	2.810	271	
Slew Ring	22	1	3.100	3.100	0.175	1950	
Bottom Jib Section	23	1	13.700	3.040	2.414	2018	
Jib Extension Section	24	1	9.200	2.414	2.414	1358	
Jib Extension Section	25	1	4.600	2.414	2.414	804	
Top Jib Section	26	1	13.533	2.414	2.414	2681	
Bridle	27	1	1.055	0.630	0.890	213	
2-Fall Hook	28	1	0.890	0.332	1.940	1141	
Powerpack Winches	29	1	4.250	2.600	2.250	13459	
Hoist Rope	30	1	565.000	-	-	4343	
Split Deck - Front	31	1	3.550	3.320	1.492	7763	
Split Deck - Back	32	1	6.585	3.280	1.100	8631	

**Distributed By:**



\*Subject to change without notice

440D00F



**FAVELLE FAVCO CRANES (M) SDN BHD**  
 Lot 9895, Jalan Kampung Jawa  
 Section 35, Bandar Shah Alam 40470  
 Selangor Darul Ehsan MALAYSIA  
 Tel: 603 333 7835, 603 333 7836  
 Fax: 603 333 7842  
 E-Mail: admin@fc.po.my

**FAVELLE FAVCO CRANES PTY LTD**  
 28 Yamunga Street Prestons  
 NSW 2170 Australia  
 Telephone: 61 2 9607 0055, 61 2 9608 2000  
 Fax: 61 2 9607 0022, 61 2 9607 2728  
 E-Mail: favcosyd@enternet.com.au

**FAVELLE FAVCO CRANES PTE LTD**  
 No. 6 Sungei Kadut Loop  
 Singapore 729 453  
 Tel: 65 366 3508  
 Fax: 65 366 3503  
 E-Mail: favelle@mbox4.sigmet.com.sg

**FAVELLE FAVCO CRANES (USA) INC.**  
 4th Mile East, FM106  
 Port of Harlingen, Texas, 78550 USA  
 Tel: 1 956 4287488  
 Fax: 1 956 4287749  
 E-Mail: favcouusa@xanadu2.net

**KROLL CRANES AIS**  
 Nordkranvej 2,  
 DK-3540 Lynge Denmark  
 Tel: +45 4818 7400  
 Fax: +45 4818 8807  
 E-Mail: krollcranes@krollcranes.dk