

1250HC

Packing List

Origin : Germany
CIF Pusan Korea

Type Liebherr 1250 HC
Works no 28.672
Specification: Jib 80.8m:
15 mast sections:
Max. capacity 20/40 ton

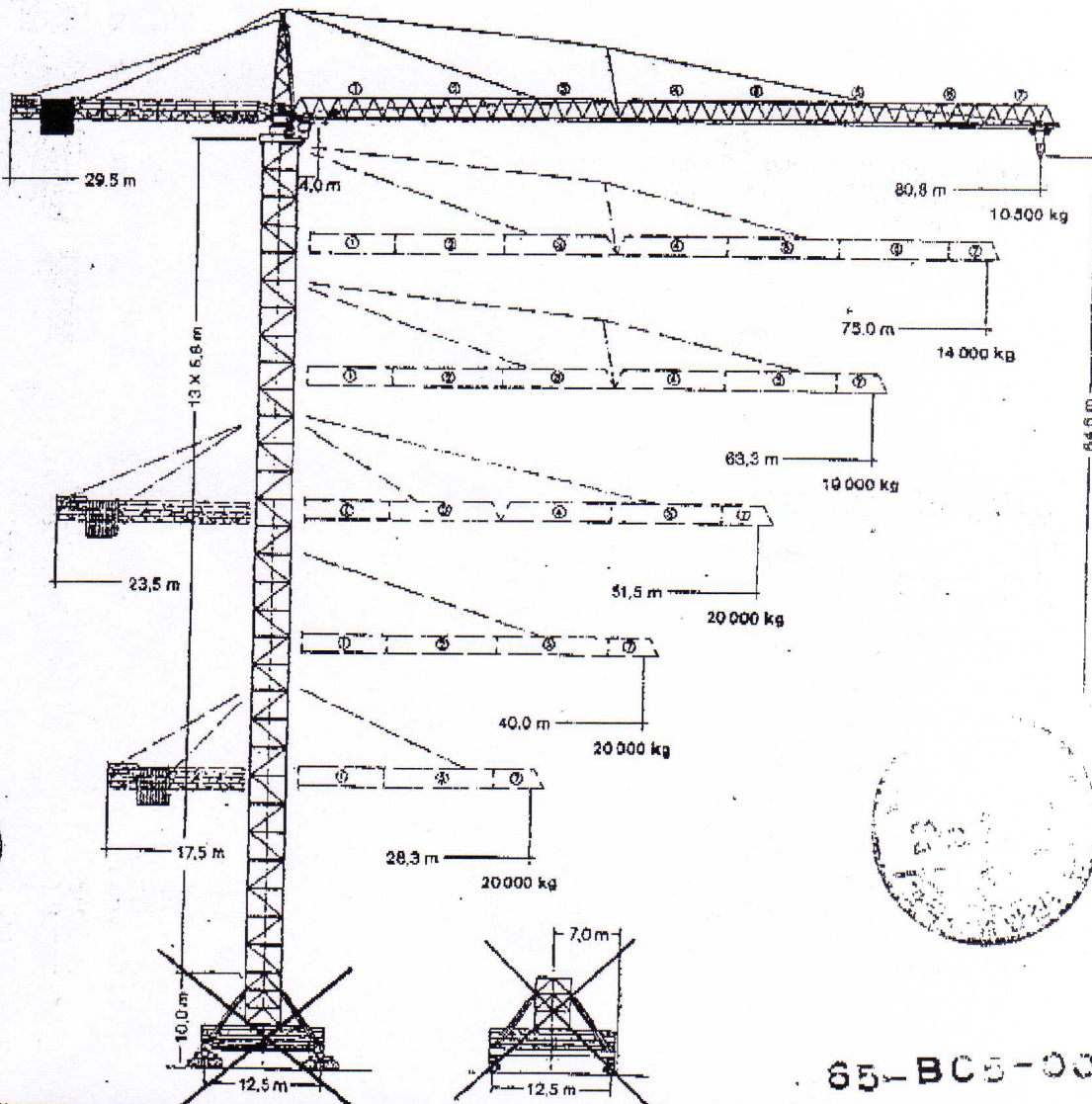
No	Container Type	Container-No	Description of content	Weight (kg)
1		703 146 - 4	2 x Jib section 635.111 + 541.111 + trolley + small parts	
2		813 550 - 3	Jib section 633.111 + 3 x counterweight	
3		827 246 - 4	Jib section 631.111 + tie bars	
4		904 561 - 9	Jib section 621.111 + tie bars	
5		861 926	Tower head + ladders + 2 x counterweight	
6		875 251	Counter jib heel section + mid section + tie bars + 1 x ladder	
7		823 088	Jib section 634.111 + 2 x counterweight	
8		825 081	Jib section 632.111 + jib tiebars + 2 x counterweight	
9		824 866 - 3	Jib section 621.111	40t jib
10		871 207 - 5	Jib section 632.111	40t jib
11		861 079 - 3	Jib section 633.111	40t jib
12		866 665 - 6	Jib section 631.111 + Trolley + load hook	40t jib
13		914 755 - 4	Jib section 611.111	40t jib
14		815 513 - 5	Jib section 641.111 (This Container will be sent to Egersund to be filled up	40t jib
15		700878 - 7	Jib section 611.111	
16		480433 - 5	3 Mast sections - platforms - handrails	
17		455704 - 9	3 Mast sections - 2 ladders - platform	
18		451093 - 1	3 Mast sections - 2 counterweights -	
19		454500 - 7	Cage parts - pins for mast sections - platforms - 2 ladders - access platform	
20		875834 - 6	3 Mast sections - platforms for cage	
21		450074 - 2	Service winch hoist frame - climbing parts - bottom mast - cage parts	
22		452869 - 4	Pins for jib and cage - hydraulic for climbing - cage parts -	
23		452291 - 1	Counterjib nose - hook 20t - cleable - tie-bars - platforms - pins	
24		451481 - 2	A-frame - 2 Mast sections - 2 platforms	

40t
Egersund

[Place], [Date]

Tower Crane
Grue à tour

Turmdrehkran 1250 HC-S



65-BC5-0017

Maßstab 1: 700

LEIBHERR

Daten für fahrbaren Kran

Data for rail-going crane

Caractéristiques pour grue sur rails

Radsland Wheel gauge Empattement	12,5 m
Spurweite Track gauge Ecartement de la voie	12,5 m

Starrer Unterwagen Rigid undercarriage Châssis rigide
Kurvelfahrt auf Anfrage For curved track on request Pour voie courbe sur demande

Ausladung und Tragfähigkeit

Radius and capacity

Portée et charge

Auslegerlänge Length of jib Longueur de flèche m	Max. Tragfähigkeit Max. capacity Charge max. m/kg	Ausladung und Tragfähigkeit m/kg 20 t-Ausführung/Type Radius and capacity Portée et charge																		
		5,2	54,0	56,0	58,0	60,0	61,0	62,0	63,3	64,0	66,0	68,0	70,0	72,0	74,0	75,0	76,0	78,0	80,0	80,8
80,8	4,0-52,7 20000	20000	19490	18750	18050	17400	17090	16790	16420	16220	15680	15170	14690	14240	13810	13600	13400	13010	12640	12500
75,0	4,0-54,3 20000	20000	20000	19280	18560	17900	17500	17270	16890	16690	16130	15610	15120	14650	14210	14000				
69,3	4,0-60,3 20000	20000	20000	20000	20000	20000	19770	19430	19000											

		40 t-Ausführung/Type																		
		26,0	28,0	32,0	35,0	40,0	44,0	48,0	51,5	52,0	56,0	60,0	63,3	64,0	68,0	72,0	75,0	76,0	80,0	80,8
80,8	5,2-28,7 40000	40000	37930	32700	28630	25360	22690	20460	18710	18580	16960	15560	14530	14330	13260	12280	11630	11420	10650	10500
75,0	5,2-27,9 40000	40000	38920	33570	29400	26000	23320	21040	19250	19110	17460	16020	14970	14770	13660	12670	12300			
69,3	5,2-30,2 40000	40000	40000	37860	32960	29260	26230	23710	21730	21560	19760	18160	17000							
51,5	5,2-32,0 40000	40000	40000	40000	36210	32200	28910	26160	24000											
40,0	5,2-38,4 40000	40000	40000	40000	40000	36000														

Geschwindigkeiten

Speeds

Vitesses

	U/mis 0,6 st/min tr/min	4 x 13,0 kW
	bis / up to / jusqu'à 20t 5,0/11,3/25,5/76,3 m/min bis / up to / jusqu'à 40t	6,0 kW + WSB
	25,0 m/min	4 x 10,8 kW

Technische Kenngröße nach BGL 2125-1250
 Technical nominal size according to the construction machinery list (BGL)
 Grandeur caractéristique suivant le barème d'emploi des appareils (BGL)

Gesamtmotorenleistung mit 80 kW-Hubwerk - 20 t 177,8 kW
 Total motor output with hoist gear
 Puissance totale des moteurs avec mécanisme de levage

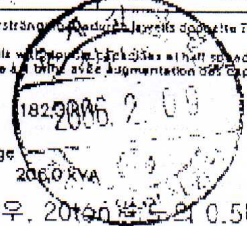
Gesamtanschlußwert (bei Gleichzeitigkeitfaktor von 0,5) 202,0 kVA
 Total power requirement (with a simultaneity factor of 0,5)
 Puissance totale requise (avec un facteur de simultanéité de 0,5)

Hubwerk Daten f. 20 t-Ausf./Type* Hoist gear Mécanisme de levage	Gang Gear Rapport	kg	m/min
80,0 kW / WSB / Eimag Hubhöhe mit LS-Trommel 90,0 m (2 Lagen) Hoist height with LS-drum (2 lay.) Hauteur sous crochet avec enrouleur LS (2 couches)	1	20000	2,0/ 20,0
	2	8000	5,0/ 50,0
	3	5100	10,5/105,0
	4	1000	19,3/193,0
110,0 kW WSB Eimag Hubhöhe (2 Lagen) 82,0 m Hoisting height (2 layers) Hauteur sous crochet (2 couches)	1	20000	3,0/ 25,0
	2	12500	4,0/ 40,0
	3	5300	8,0/ 83,0
	4	1000	21,0/210,0
190 kW/Ward-Leonard Hubhöhe mit LS-Trommel 92,0 m (4 Lagen) Hoist height with LS-drum (4 lay.) Hauteur sous crochet avec enrouleur LS (4 couches)	1	20000	0-32
	2	16000	0-50
	3	8000	0-90
		5000	0-200

* Bei 40 t-Ausführung Hubwerk viersträngig. Bei Ausführung 20 t-Ausführung Tragfähigkeit bei halbierten Geschwindigkeiten.
 In case of 40 t execution four falls with capacity at half speeds.
 En cas d'exécution à 40 t, moufle à 4 brins avec augmentation de 50% capacités de 100 % et réduction de vitesses de 50 %.

80 kW-Hubwerk - 40 t
 hoist gear
 mécanisme de levage

→40ton(4fall)의 경우, 20ton 용량의 0.5배를 적용

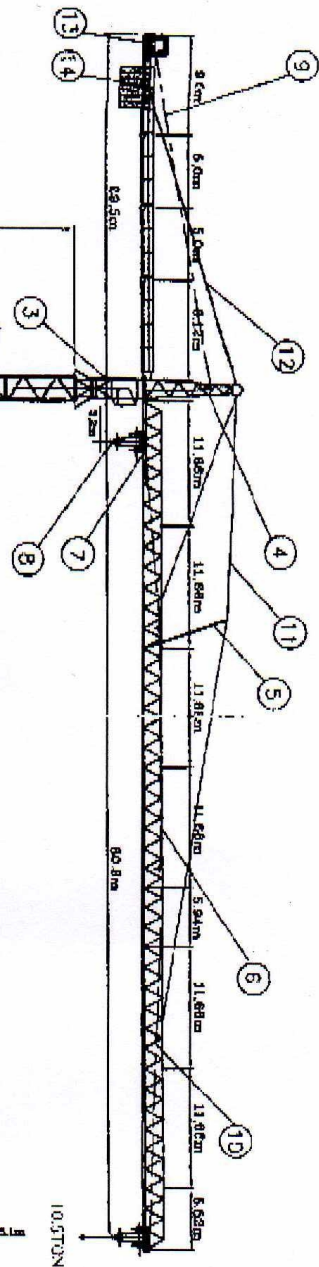


Technische Daten - Technical data

Caractéristiques techniques

065-BC5-0017

TOWER CRANE 1250HC-S 총 조립도



정수입호 :
TOWER CRANE 1250HC-S (2007년)

* 기본 사양 *

구분	선정치(KW)	CLEAR RATIO	권선중량(KG)	속도(m/min)	비율
권선중량	190 KW	ELIAC 1	40,000	0 ~ 16	1 = 1/75.76
		ELIAC 2	32,000	0 ~ 25	1 = 1/48.31
		ELIAC 3	18,000	0 ~ 45	1 = 1/26.69
		ELIAC 4	5,000	0 ~ 100	1 = 1/12.12
선입중량	134KW4			0.6 rev/min	
기어중량	1.75/3.5/6/8KW			5.9/11.3/22.5/76.3 r/min	
WIND ROPE 사양	2600KW				
MAIN CABLE		HOIST (φ30 POD 2118CBK 1770Z2 - minB:75.316TON)			
		TROLLEY (φ16 PDK 114QBK 1770Z2 - minB:21.356TON)			
		2x100mm ² (4c) (Rubber cable HOZN-1450/750N or 3RNC1)			
MAIN 프레임 용량		800A			

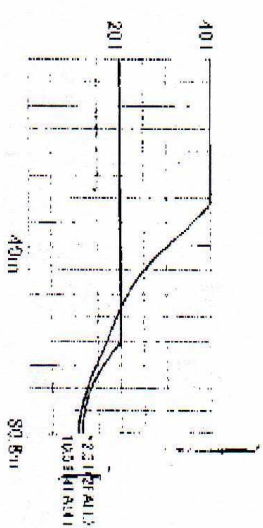
* FREE 상태에서 코킹케이지는 마스트 하부로 내려 놓을 것

품명 LIST

NO	구분	수량(KG)	비고
1	TOWER SEC.	13EA	134,800
2	TELESCOPIC CAGE	1EA	15,000
3	SWING PLATE/CAM COMPLETE	1EA	39,900
4	TOWER HEAD	1SET	9,100
5	MAIN JIB SEC	1EA	26,450
6	TROLLEY	1EA	1,600
7	HOOK	1EA	4,000
8	HOIST ROPE	1EA	1,730
9	TROLLEY ROPE	1EA	685
10	JIB SUSPENSION	1EA	6,770
11	C/JIB SUSPENSION	1SET	2,370
12	C/JIB SEC.	4EA	18,500
13	HOIST GEAR UNIT	1SET	14,200
14	COUNTER JIB BAL. LAST	1SET	62,600
TOTAL WEIGHT			327,273KG

* Ballast Block *

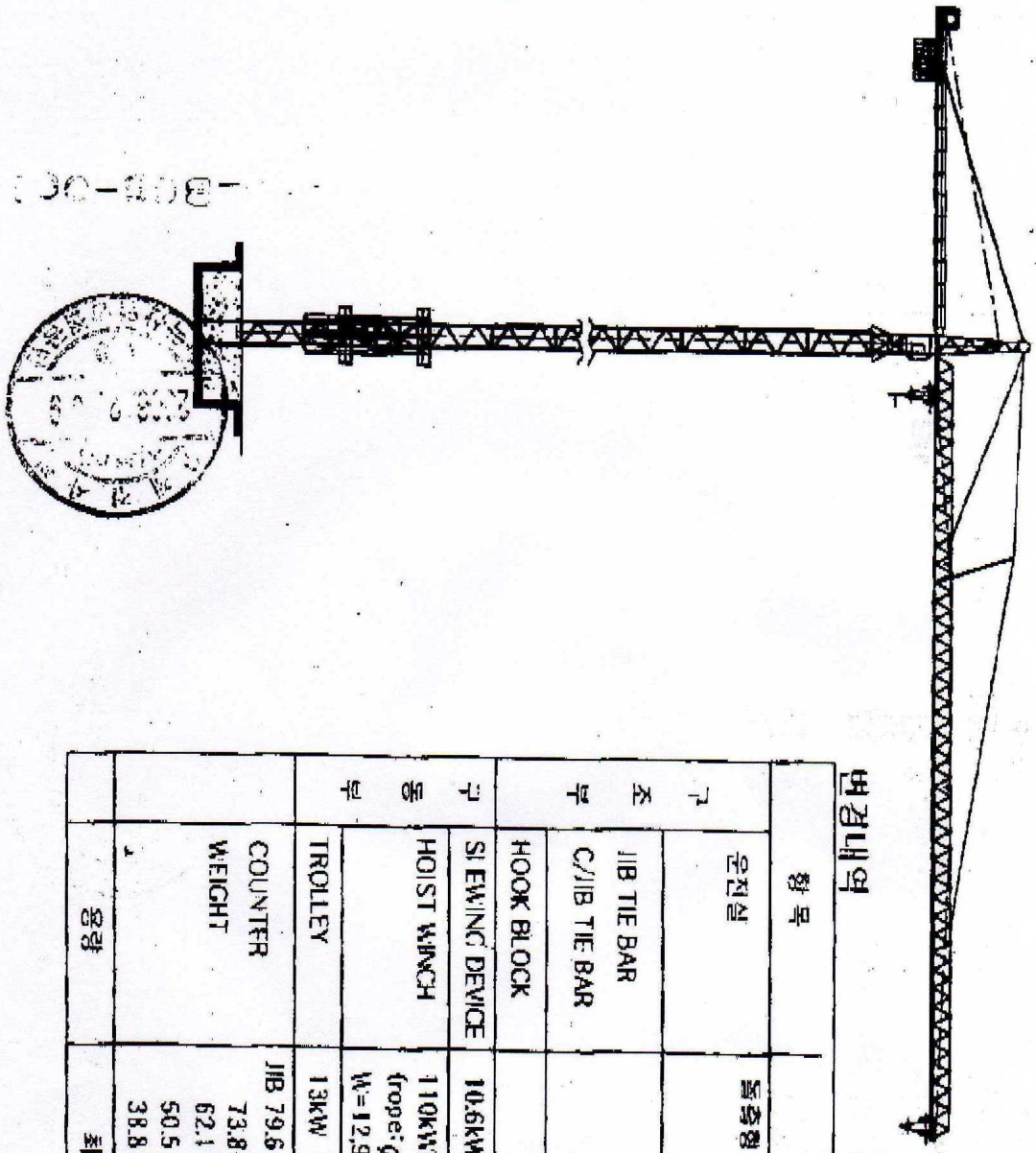
JIB	WEIGHT
79.6m	62TON
73.8m	55TON
62.1m	47.2TON
50.5m	51.2TON
38.8m	36.9TON



1250HC-S 총 조립도

NO	DESCRIPTION	SIZE	MATL	QTY	REMARKS
	1250HC-S				
REV	DATE	CAUSED			

TOWER CRANE 1250HC & 1250HC-S 비교



변경내역

구분	항목	1250HC	1250HC-S
구조	운전실		내장형 (타워높이 4.7M중기) POST: 2L-200x24K(ST52-3)
	JIB TIE BAR C/JIB TIE BAR	-	자체규격 및 SUSPENSION 길이변경
	HOOK BLOCK	-	4FALL시 HOOK 연결대 변경
구동	SI EWING DEVICE	10.6kW	13kW
	HOIST WINCH	110kW(A.C) (rope: Ø33) W=12,900kg	1차: AC 224kW 2차: DC 190kW (rope: Ø30) W=14,200kg
	TROLLEY	13kW	1.7 / 3.5 / 6 / 6kW
용량	COUNTER WEIGHT	JIB 79.6 6.4X10 = 64t	JIB 79.6m 6.2X10 = 62t
		73.8	57.6t
		62.1	51.2t
		50.5	54.4t
최대 용량	최대 40톤	최대 40톤	

NO.	DESCRIPTION	SIZE	QTY	REMARKS
1250HC & 1250HC-S 비교				
REV	DATE	CAUSED		
제작소: 타워				1250HC-S