

EPEC LTD - BKT CRANES

Activities : serial and special cranes engineering

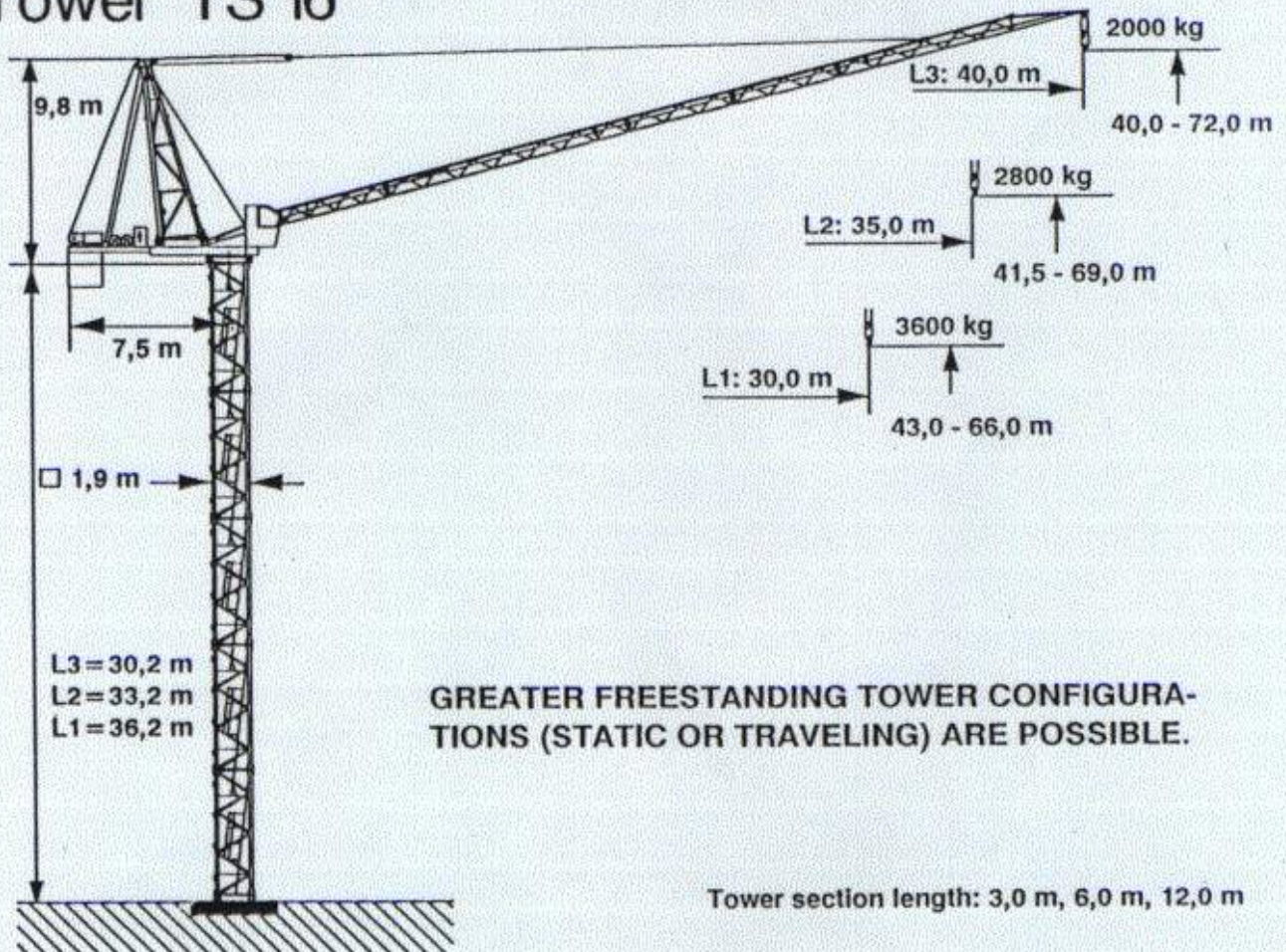
Tel. : 001.41/37.22.08.44.

Fax : 001.41/37.22.08.52.

FEM	A 3
Max. load moment	1120 kNm
Max. lifting capacity	8,0 t
Max. radius	40,0 m

BKT-Crane BN 90

Tower TS 16



GREATER FREESTANDING TOWER CONFIGURATIONS (STATIC OR TRAVELING) ARE POSSIBLE.

Tower section length: 3,0 m, 6,0 m, 12,0 m

EPEC LTD - BKT CRANES

Activities : serial and special cranes engineering

Tel. : 001.41/37.22.08.44.

Fax : 001.41/37.22.08.52.

BN 90

FEM A 3

Hoisting unit 37 kW SL / WB

Radius and capacity

Jib	Max. capacity		Radius (m) and capacity (t)												
	m		14,0	16,0	18,0	20,0	22,0	24,0	27,0	30,0	32,0	35,0	37,0	40,0	
L 3 40,0 m	8,0 t	3,3 - 11,0	6,27	5,45	4,81	4,30	3,88	3,53	3,10	2,76	2,57	2,32	2,18	2,00	
L 2 35,0 m	8,0 t	2,7 - 13,0	7,45	6,48	5,72	5,12	4,63	4,22	3,71	3,31	3,09	2,80			
L 1 30,0 m	8,0 t	2,1 - 14,0	8,00	7,01	6,20	5,55	5,01	4,57	4,03	3,60					

Speeds

		$t = 0,8/1,6/6,4 \text{ min}$		K - PU	24,0 kW			
		$n = 0 - 0,81 \text{ min}^{-1}$		K - WB	1 x 5,0 kW			
		$v = 0 - 25 \text{ m/min}$		K - PU	2 x 5,5 kW			
Type SL-WB 37/8	HK - = max.100 m 3-layers					37,0 kW		
		1.Gear	112 m/min	1,7 t	1.Gear		56 m/min	3,4 t
			11,2 m/min				5,6 m/min	
		2.Gear	46 m/min	4,0 t	2.Gear		23 m/min	8,0 t
4,6 m/min			2,3 m/min					
380 V 50 Hz 3 Ph	Total motor output					77,0 kW		
	Connection power					130 kVA		