



BKT

FEM

C E

A 3

Max. load moment 7264 kNm

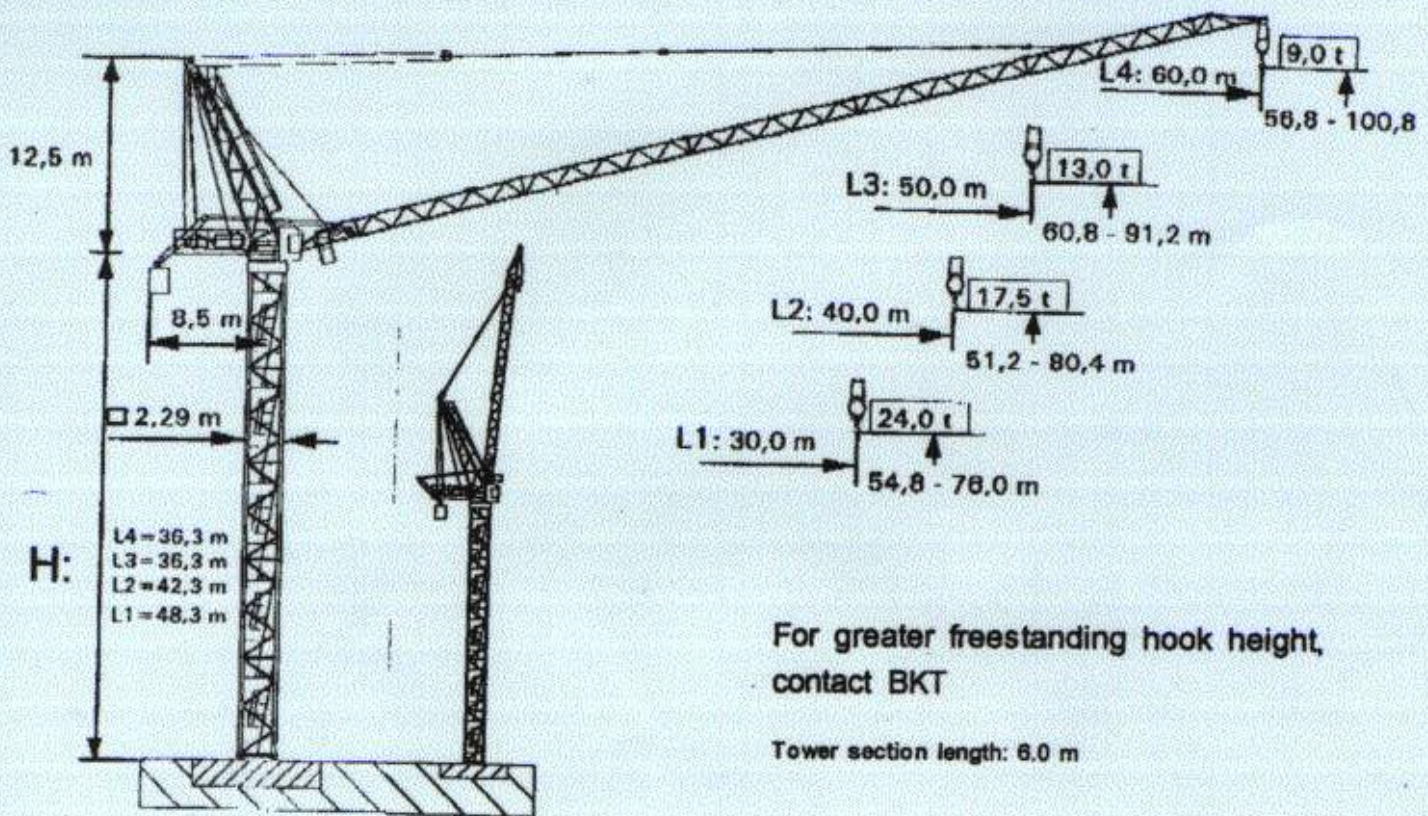
Max. lifting capacity 32.0 t

Max. radius 60.0 m

Frequency 60 Hz

BKT - Crane BN 605

Tower TG 23



For greater freestanding hook height,
contact BKT

Tower section length: 6.0 m

Edition 196 Improvements conditioned by development without notice

BN605TE1PM4



Steinheilstraße 8
85737 Ismaning
Telefon 089 / 962 42 9-0
Telefax 089 / 961 44 94

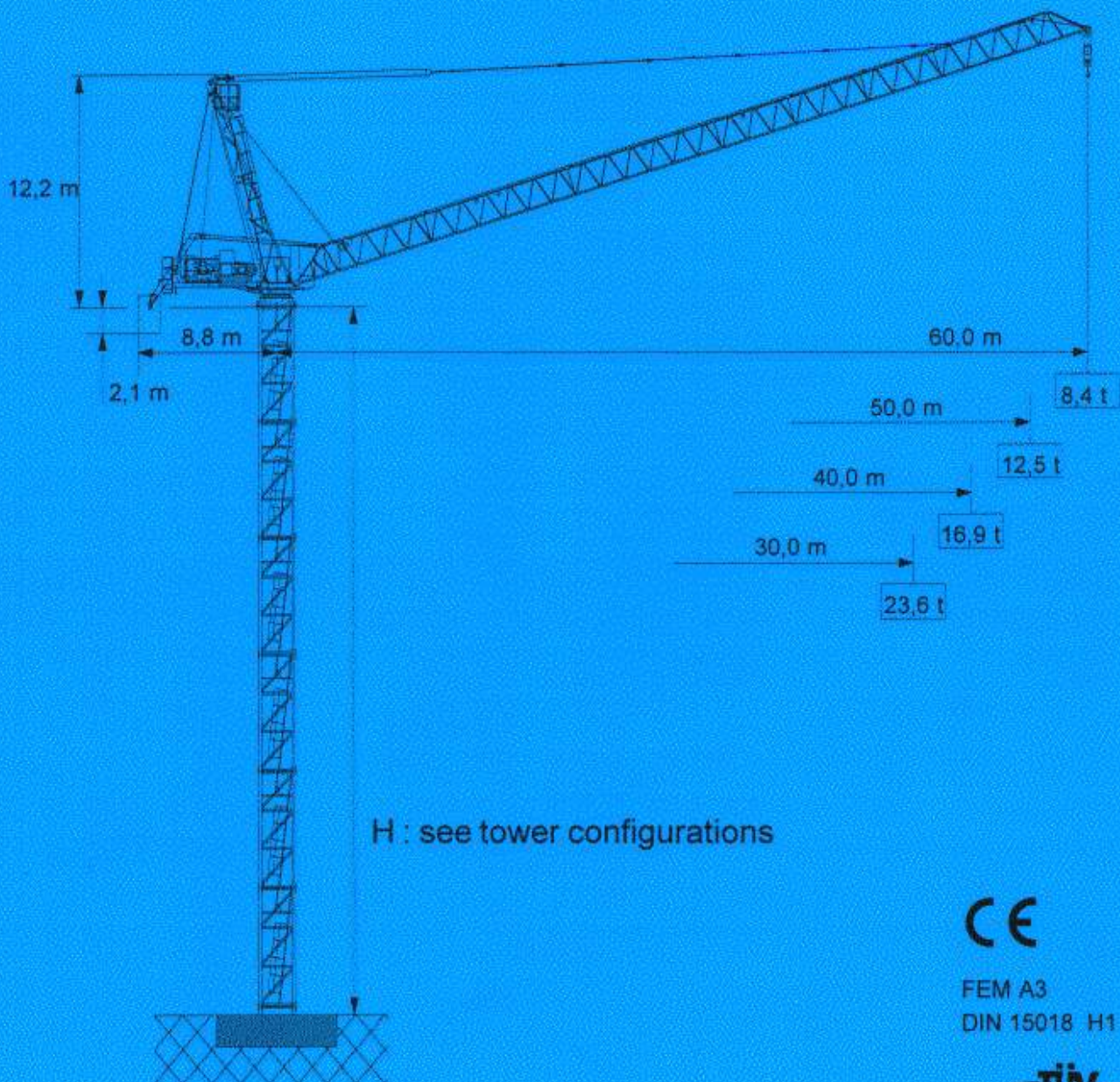


DIN EN ISO 9001

(주) 씨엔씨 코리아
서울시 종로구 신문로 1-58
(구세군 회관 703호)
TEL : (02)730-6402/4
FAX : (02)737-8523

LUFFING CRANE BN 605 - 50

2/4- fall



CE

FEM A3
DIN 15018 H1 - B3



DIN EN ISO 9001

Edition 09 96 Subject to modification

605_504K.PM4

Technical data

BN 605 - 32

Radius and capacity

Boom length m		Max. capacity		Radius (m) and capacity (t)												
		t	m	20,0	22,0	24,0	26,0	28,0	30,0	35,0	40,0	45,0	50,0	55,0	60,0	
60,0		16,0	5,7 - 34,5	16,00	16,00	16,00	16,00	16,00	16,00	16,00	15,79	13,76	12,17	10,90	9,86	9,00
50,0		32,0	4,5 - 21,1	32,0	30,68	28,08	25,83	23,92	22,27	18,98	16,48	14,54	13,00			
		16,0	4,5 - 41,1	16,00	16,00	16,00	16,00	16,00	16,00	16,00	16,00	14,54	13,00			
40,0		32,0	3,3 - 22,4	32,00	32,00	29,77	27,41	25,39	23,03	20,13	17,50					
		16,0	3,3 - 40,0	16,00	16,00	16,00	16,00	16,00	16,00	16,00	16,00					
30,0		32,0	2,1 - 22,7	32,00	32,00	30,23	27,03	25,78	24,00							
		16,0	2,1 - 30,0	16,00	16,00	16,00	16,00	16,00	16,00							

Speeds

	$t = 2,90 \text{ min}$		79,2 kW-WB				
	$n = 0 - 0,68 \text{ min}^{-1}$		2x6,6 kW-WB				
	$v = 0 - 30,0 \text{ m/min}$		2x9,0 kW-FK				
		1.Gear	36,0 m/min 16,0 t		1.Gear	18,0 m/min 32,0 t	122,4 kW/WB
			3,6 m/min			1,8 m/min	
		2.Gear	58,0 m/min 10,3 t		2.Gear	29,0 m/min 20,6 t	
			5,8 m/min			2,9 m/min	
	3.Gear	92,0 m/min 6,2 t	3.Gear	46 m/min 12,4 t			
		9,2 m/min		4,6 m/min			
	4.Gear	144,0 m/min 3,6 t	4.Gear	72,0 m/min 7,2 t			
		14,4 m/min		7,2 m/min			
		$HH_{\text{max}} = 180,0 \text{ m}$			$HH_{\text{max}} = 90,0 \text{ m}$		
380 V - 60 Hz		power required - upper part of crane				260,0 kVA	

BN E T 0069

01.98



Steinheilstraße 8
85737 Ismaning
Germany
Tel.: 089-962 42 9-0
Fax: 089-961 44 94










DIN EN ISO 9001




BN 605-50

2/4-fall

Radius and capacity

Jib		max. Capacity		m x t										
m	Rope fall	t	m	18	20	22	25	30	35	40	45	50	55	60
60,0		25,0	21,7	25,0	25,0	24,7	21,6	17,8	15,1	13,1	11,5	10,3	9,3	8,4
50,0		36,0	18,7	36,0	33,6	30,4	26,6	21,9	18,5	16,0	14,0	12,5		
		25,0	27,1	25,0	25,0	25,0	25,0	21,9	18,5	16,0	14,0	12,5		
40,0		50,0	14,3	39,5	35,4	32,0	28,0	23,0	19,5	16,9				
		25,0	28,5	25,0	25,0	25,0	25,0	23,0	19,5	16,9				
30,0		50,0	14,7	40,5	36,3	32,8	28,7	23,6						
		25,0	29,1	25,0	25,0	25,0	25,0	23,6						

Speeds

380 V 60 Hz			
Motor	79,2 KW	3 x 5,2 KW	2 x 9,0 KW
Speeds	t = 2,7 min	0,55 rpm	v = 30,0 m/min

Power required - top crane

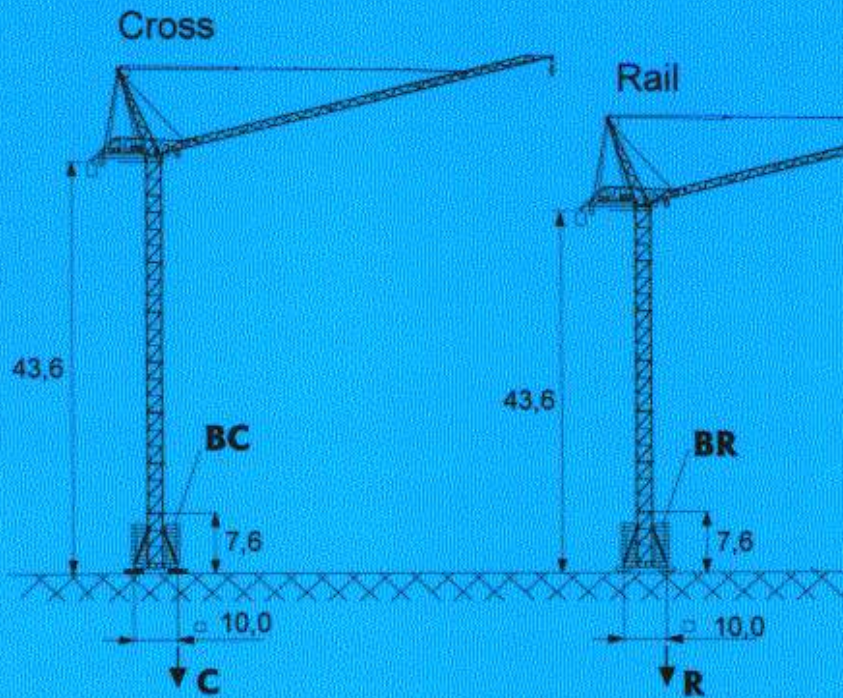
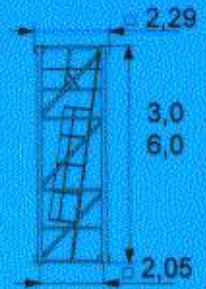
380 V 60 Hz	Hoist unit (KW)		
		180,0	
KW-kVA	274,8-343,5		

Counterweight

Jib	Hoist unit (KW)		
		180,0	
all lengths	62,0 t		

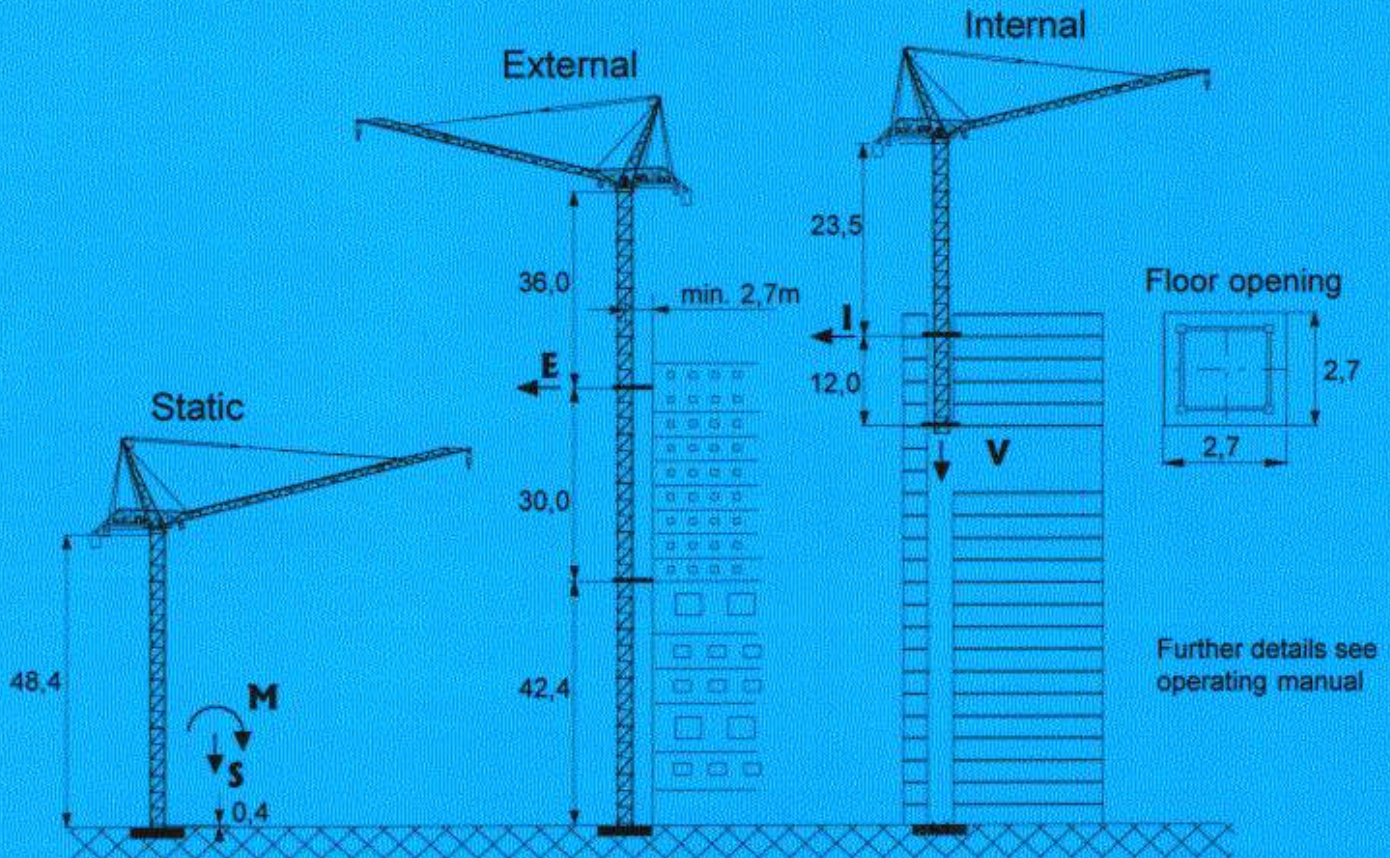
BN 605

TOWER TG 23



\circ	108,3	\circ in service
\blacktriangle	104,8	\blacktriangle out of service
	BC 70,0	
\circ	116,2	V-S without load
\blacktriangle	104,4	all measures in m
	BR 70,0	
E (t)	56,9	
I (t)	63,6	
V (t)	130,6	
S (t)	138,8	
M (mt)	902,0	

\circ in service
 \blacktriangle out of service
V-S without load
 all measures in m

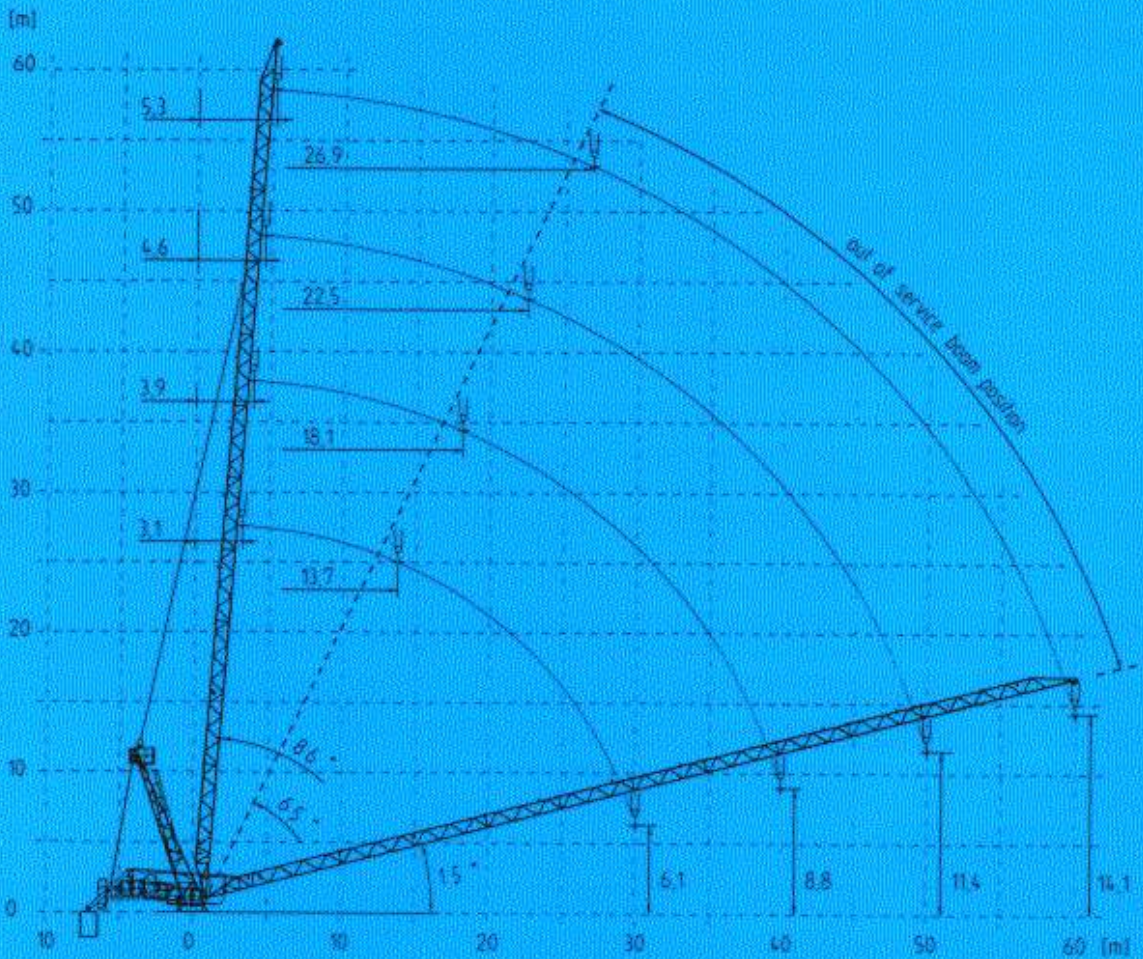


Edition 01.96 Subject to modification

Further details see
operating manual

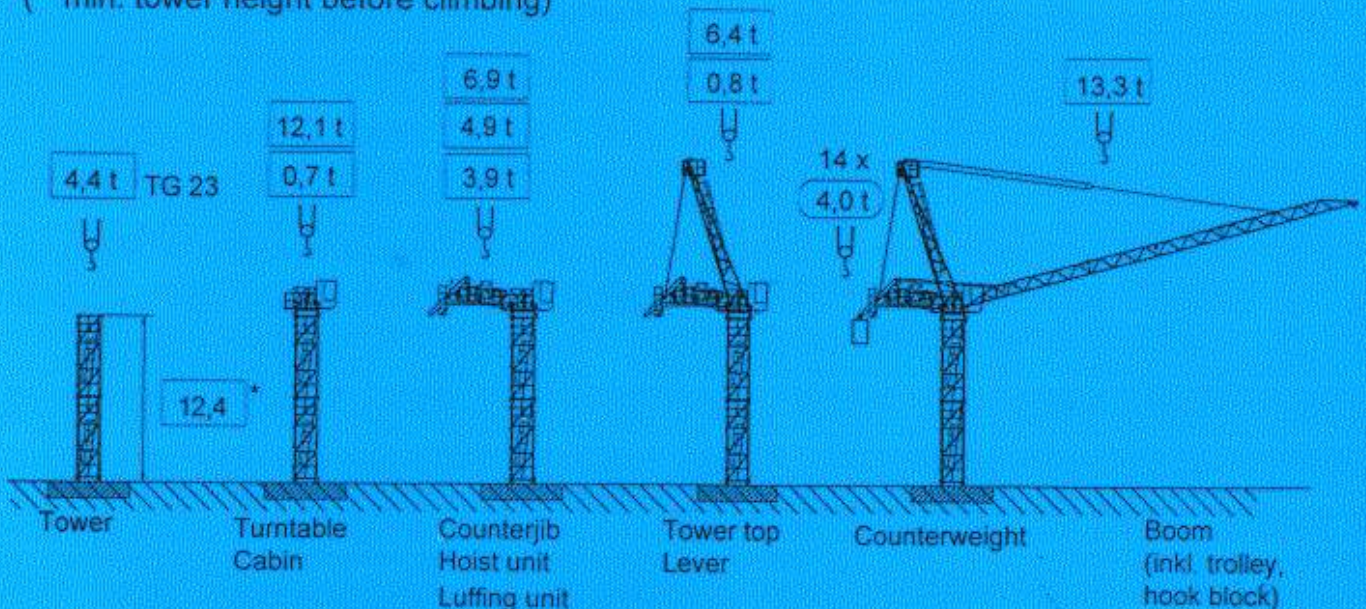
BN 605

Boom positions












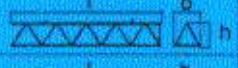



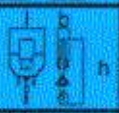


Erection steps & app. weights (boom length 60,0 m)

(* min. tower height before climbing)



Crane transport

Upper part of crane








Nb.	Description		Dimensions m			Weight per piece t
			l	b	h	
1	Turntable + KDA + Switch board + Cabin		3,91	2,58	2,90	12,95
1	Counter jib + Hoist unit 2x79,2KW WB + Luffing unit + Platform + Railing		6,80	4,05	2,45	11,95
1	Counter jib + Railing + Platform		6,07	3,45	2,45	3,05
2	Ballast lever		4,49	1,07	0,77	1,75
1	Hoist unit 2x79,2 KW WB + Hoist rope		4,0	2,40	1,77	4,95
14	Counterweight BG		1,20	0,25	2,09	4,00
1	Tower top		11,91	2,80	2,00	7,20
1	Boom section AS		9,55	1,91	1,77	2,90
1	Boom section AS		10,53	1,90	1,77	2,95
1	Boom section AS		10,47	1,90	1,84	2,50
3	Boom section AS		10,53	1,90	1,77	2,10
1	Maintenance trolley		1,45	0,41	1,00	0,16
1	Hook block 4-fall		1,51	0,50	2,75	1,60
1	Tower section TG 23		6,04	2,28	2,29	4,43
1	Climbing unit KE 22/23		11,17	2,96	3,17	13,10






BN 605-32

2/4-fall

Radius and capacity

Jib		max. Capacity		m x t										
m	Rope fall	t	m	18	20	22	25	30	35	40	45	50	55	60
60,0		16,0	33,9	16,0	16,0	16,0	16,0	16,0	15,5	13,4	11,8	10,5	9,47	8,6
50,0		24,0	28,0	24,0	24,0	24,0	24,0	22,3	19,0	16,5	14,6	13,0		
		16,0	41,2	16,0	16,0	16,0	16,0	16,0	16,0	16,0	14,6	13,0		
40,0		32,0	22,4	32,0	32,0	32,0	28,6	23,7	20,1	17,5				
		16,0	40,0	16,0	16,0	16,0	16,0	16,0	16,0	16,0				
30,0		32,0	22,6	32,0	32,0	32,0	28,8	23,8						
		16,0	30,0	16,0	16,0	16,0	16,0	16,0						

Speeds

380 V 60 Hz			
Motor	79,2 KW	2 x 5,2 KW	2 x 9,0 KW
Speeds	t = 2,7 min	0,55 rpm	v = 30,0 m/min

Power required - top crane

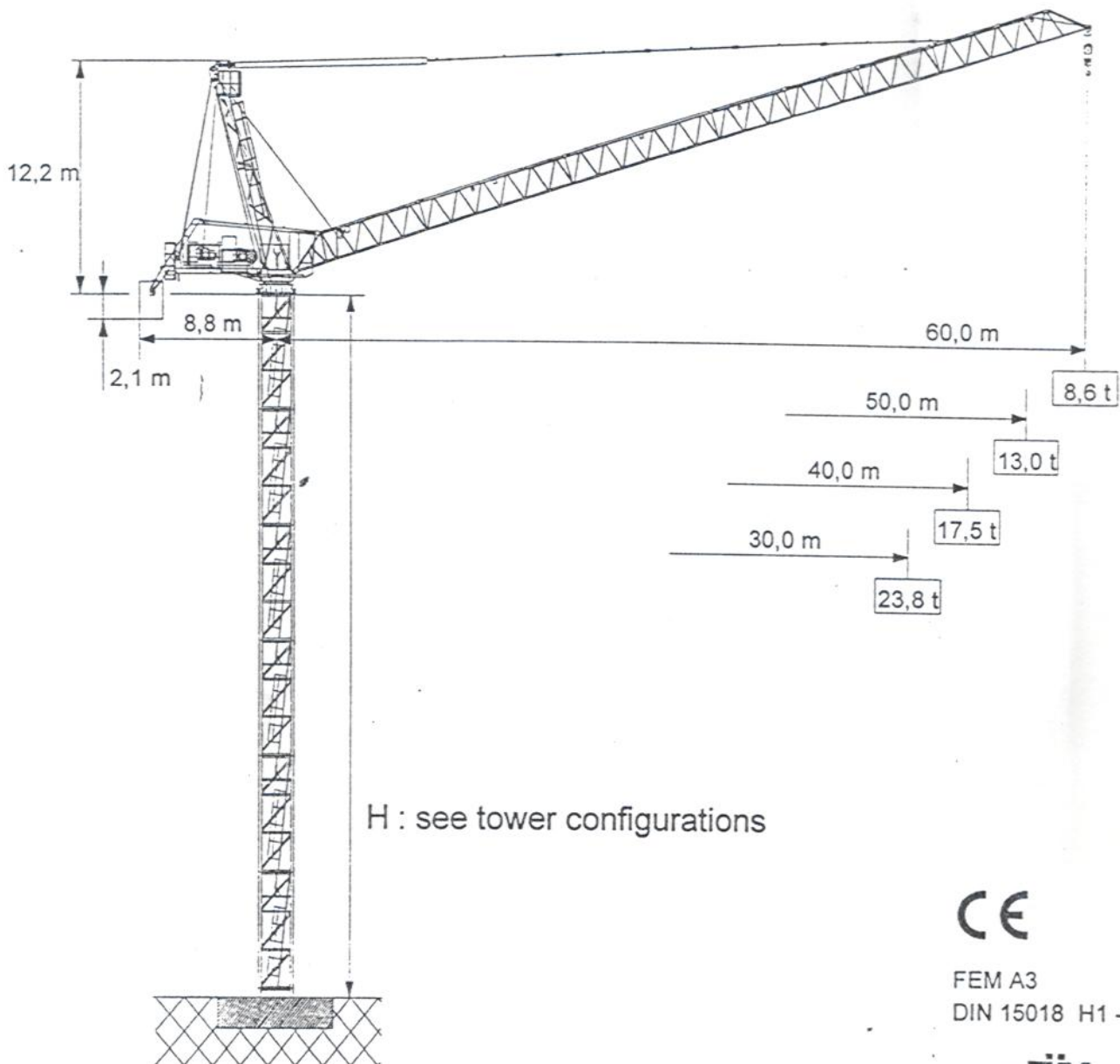
380 V	Hoist unit (KW)		
60 Hz	158,4		
KW-kVA	248-310		

Counterweight

	Hoist unit (KW)		
Jib	158,4		
all lengths	56,0 t		

LUFFING CRANE BN 605 - 32

2/4- fall



CE

FEM A3
DIN 15018 H1 - B3

 TUV
CERT

DIN EN ISO 9001

Edition 01.96 Subject to modification

605_324X.PM4