

EPEC LTD - BKT CRANES

Activities : serial and special cranes engineering

Tel. : 001.41/37.22.08.44.

Fax : 001.41/37.22.08.52.

FEM A 3

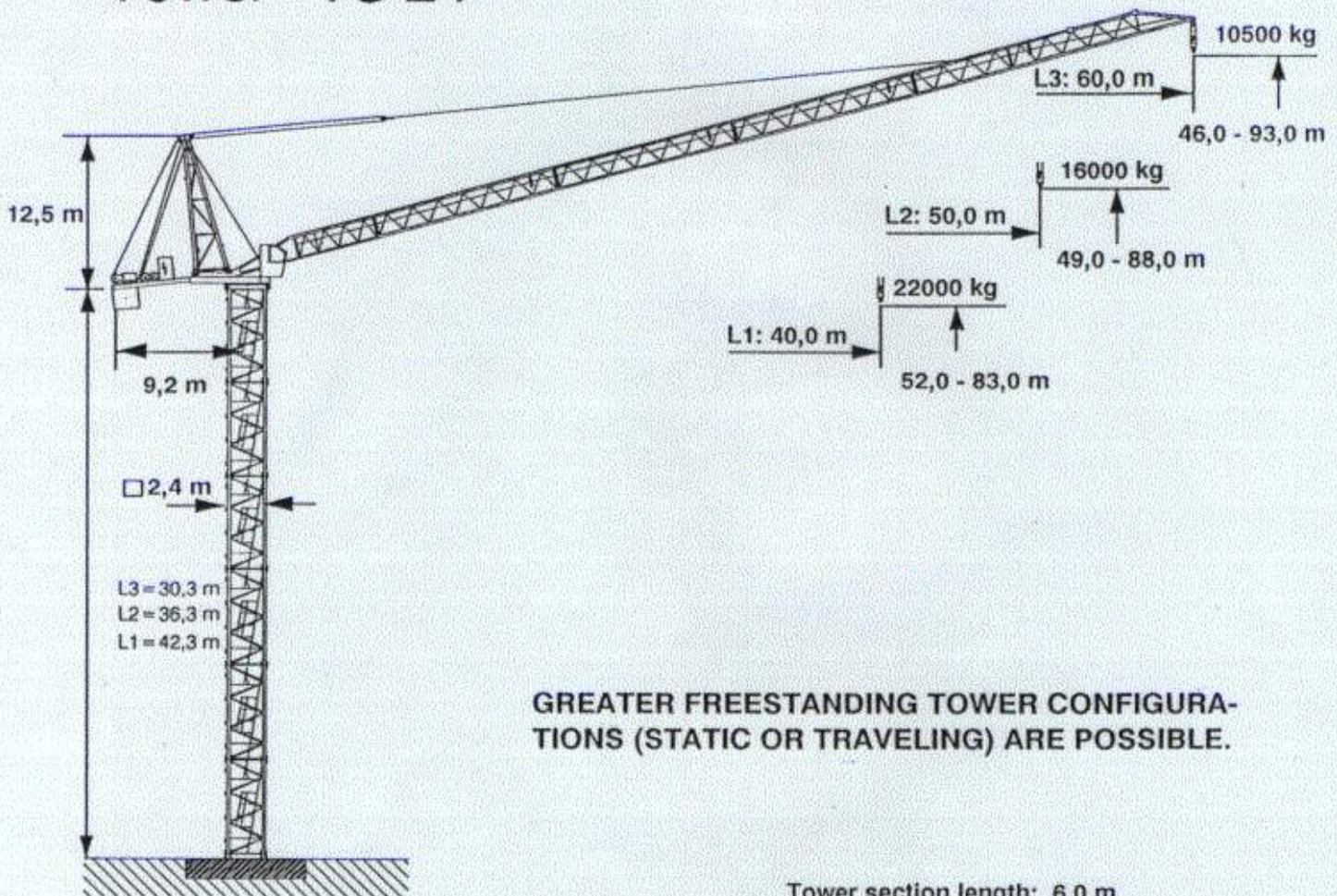
Max. load moment 9000 kNm

Max. lifting capacity 40,0 t

Max. radius 60,0 m

BKT-Crane BN 710

Tower TS 24

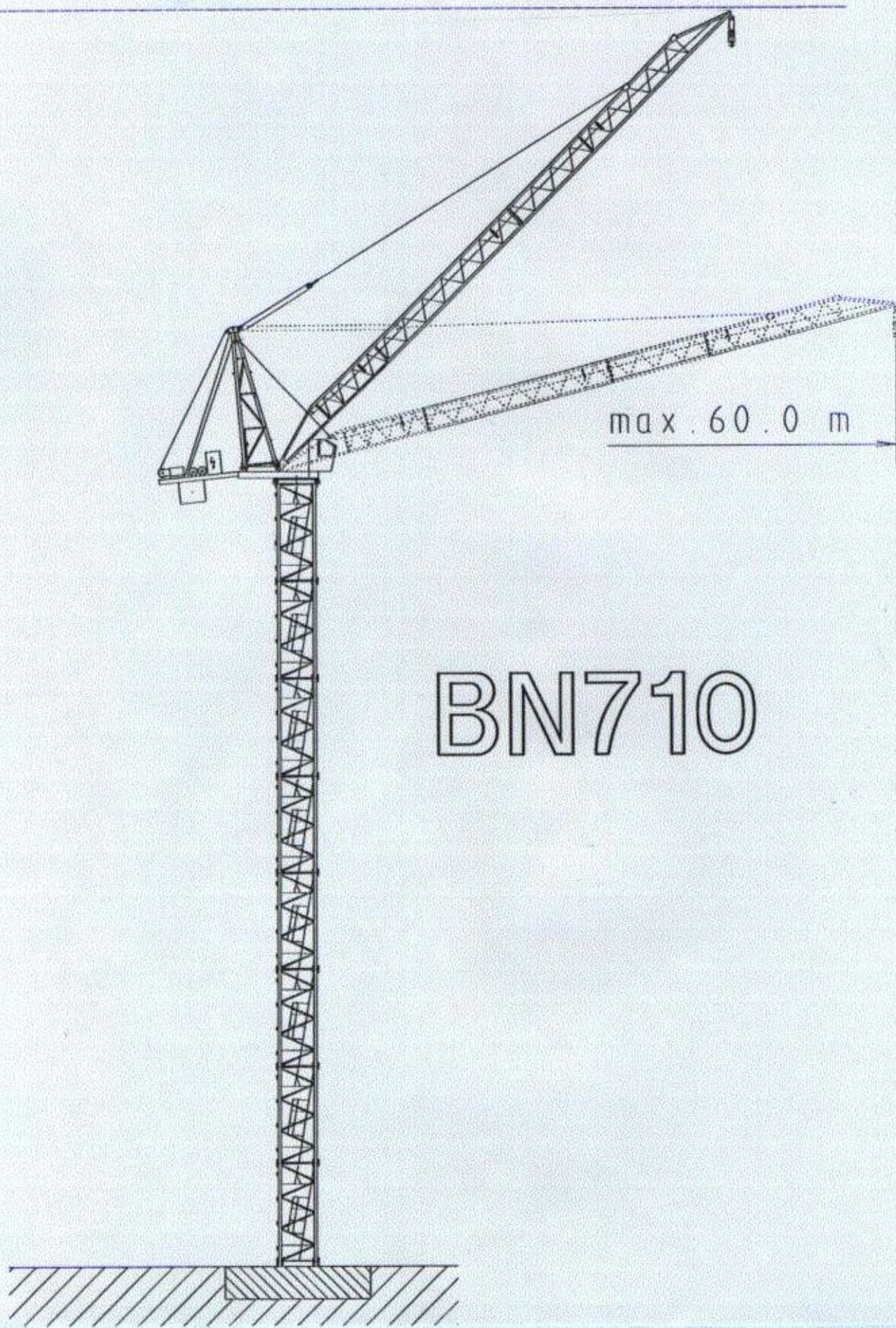


GREATER FREESTANDING TOWER CONFIGURATIONS (STATIC OR TRAVELING) ARE POSSIBLE.

EPEC LTD - BKT CRANES
Activities : serial and special cranes engineering

Tel. : 001.41/37.22.08.44.

Fax : 001.41/37.22.08.52.



EPEC LTD - BKT CRANES

Activities : serial and special cranes engineering

Tel. : 001.41/37.22.08.44.

Fax : 001.41/37.22.08.52.

BN 710 FEM A 3

Hoisting unit 102 kW SL / WB

Radius and capacity

Jib	Max. capacity		Radius (m) and capacity (t)												
m															
		22,0	24,0	27,0	30,0	33,0	36,0	40,0	45,0	50,0	55,0	60,0			
L 3	60,0 m	20,0 t	5,9 - 32,5												
L 2	50,0 m	40,0 t	4,7 - 20,9	37,89	34,63	30,65	27,47	24,86	22,69	20,30	17,91	16,0			
L 1	40,0 m	40,0 t	3,5 - 22,5	40,0	37,47	33,17	29,73	26,92	24,58	22,0					

Speeds

		$t = 2,6 \text{ min}$	K - SL	102,0 kW		
		$n = 0 - 0,53 \text{ min}^{-1}$	K - WB	3 x 3,5 kW		
		$v = 0 - 25 \text{ m/min}$	K - PU	4 x 5,5 kW		
Type	HK - = max. 180 m 3-layers					
			1.Gear	100 m/min 4,5 t	1.Gear	50 m/min 9,0 t
			10,0 m/min		5,0 m/min	
2.Gear			63 m/min 7,5 t	2.Gear	31,5 m/min 15,0 t	
			6,3 m/min		3,2 m/min	
3.Gear			40 m/min 12,5 t	3.Gear	20 m/min 25,0 t	
			4,0 m/min		2,0 m/min	
4.Gear			25 m/min 20,0 t	4.Gear	12,5 m/min 40,0 t	
			2,5 m/min		1,3 m/min	
380 V 50 Hz 3 Ph	Total motor output			236 kW		
	Connection power			400 kVA		