



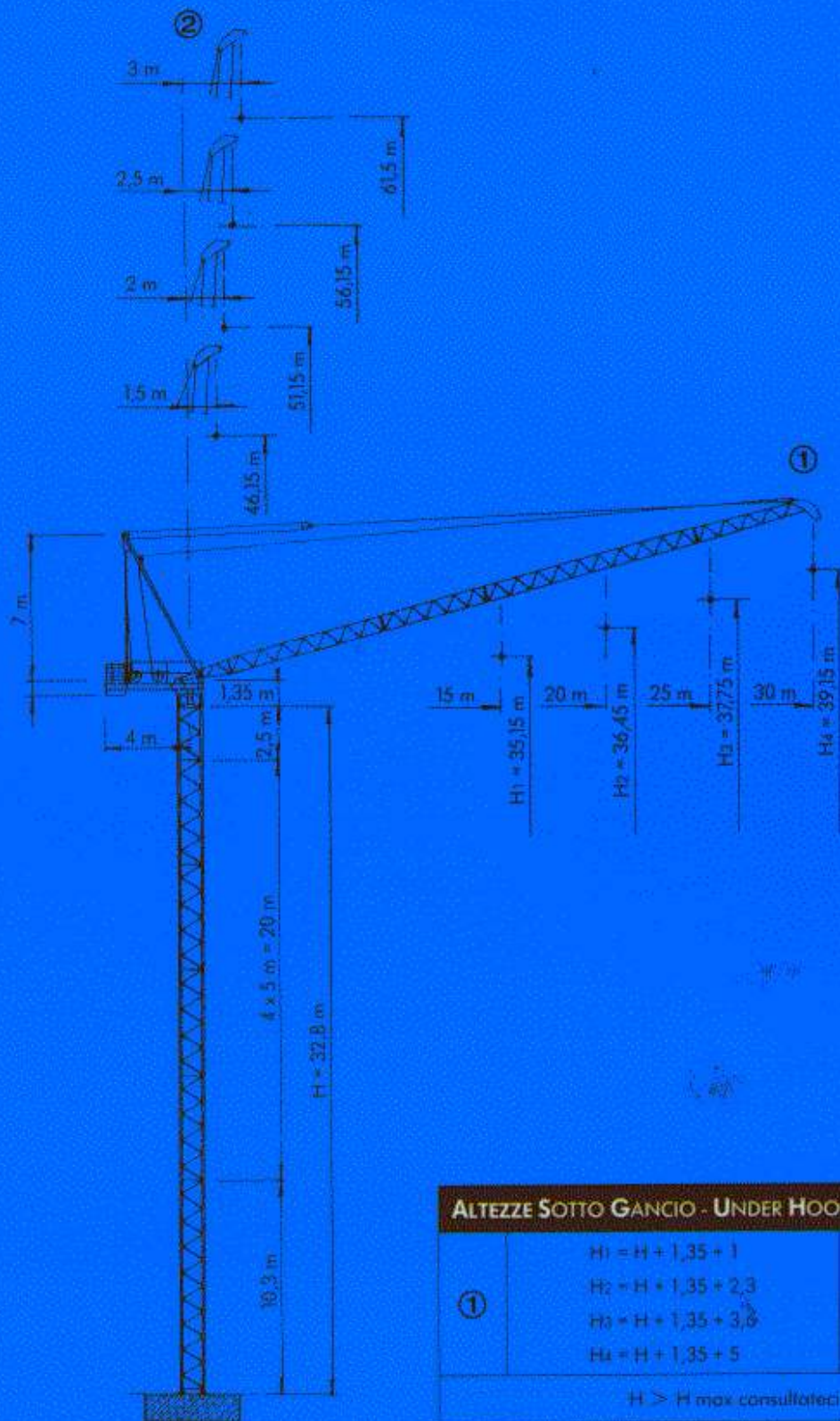
GRUCOMEDIL



**GRU A TORRE
A BRACCIO
IMPENNABILE**

**LUFFING BOOM
CRANE**

CTL 50



ALTEZZE SOTTO GANCIO - UNDER HOOK HEIGHTS

①		②	
$H_1 = H + 1,35 + 1$		$H_1 = H + 1,35 + 12$	
$H_2 = H + 1,35 + 2,3$		$H_2 = H + 1,35 + 17$	
$H_3 = H + 1,35 + 3,6$		$H_3 = H + 1,35 + 22$	
$H_4 = H + 1,35 + 5$		$H_4 = H + 1,35 + 27$	

$H > H_{\max}$ consultateci - $H > \max H$ consult us

SBRACCI E PORTATE - RANGES AND CAPACITY

	m										
	8	10	12	15	17	20	22	25	27	30	
$S_t = 9,36$ m	(II)	5	4,66	3,82	2,98	2,38	2,14	1,91	1,63	1,48	1,3
$S_t = 10,13$ m	(II)	5	5	4,16	3,25	2,82	2,34	2,09	1,8		
$S_t = 10,7$ m	(II)	5	5	4,42	3,46	3	2,5				
$S_t = 11$ m	(II)	5	5	4,59	3,6						

CTL 50



Pi	40 t *	45 t *
	19,5 t	

peso gru senza zavorra
max H max sbraccio.

Weight without ballast
Max H - Max. jib

* In servizio

* In service

* Fuori servizio

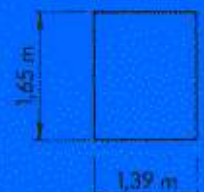
* Out of service

R1	74 t *	98 t *
R2	61 t *	88 t *
	15,5 t	

VERSIONE CLIMBING - CLIMBING VERSION



HO	17 t *	22,7 t *
HU	15 t *	16,6 t *
V	30 t *	24 t *



POTENZA TOTALE RICHIESTA
NECESSARY POWER SUPPLY

50 Kw

ARGANI
WINCHES

AG 33

CORRENTE TRIFASE
THREE-PHASE CURRENT

380/440 V - 50/60 Hz

MECCANICA - MECHANICAL COMPONENTS

Tipo - Type 2 AG 33

HP

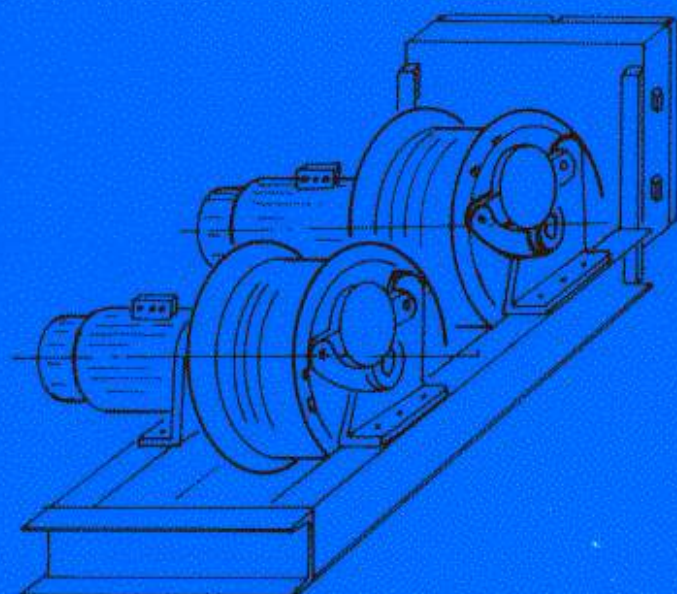
33

Kw

24



200 m



ARGANO DI SOLLEVAMENTO
HOIST WINCH

AG 33 / 3V

		m/min	Kg
Tiro 1 fune <i>Single fall</i>		9	2.500
		40	2.500
		80	1.400
Tiro 2 funi <i>Double fall</i>		4,5	5.000
		20	5.000
		40	2.800

ARGANO DI BRANDEGGIO
LUFFING WINCH

AG 33 / 2V

Angolo / Angle da +15° a +84° <i>from +15° to +84°</i>		Velocità / Speed	
		II	I
		60 sec.	180 sec.

TRASLAZIONE
TRAVELLING



TR - TC

0 - 24 m/min

2 x 4 HP

2 x 3 Kw

ROTAZIONE STANDARD
STANDARD SLEWING



RVP

0 - 0,8 n/min

4 Kgm

5 Kw

In accordo con le normative C.E.E. 84/405 e successive riguardanti il livello acustico.

In accordance with C.E.E. standards 84/405 and following for the acoustic level.

 **GRUCOMEDIL**

Via S. Egidio 47/A - 33074 Fontanafredda (PN) - ITALY
Tel. 0434/997580 - Telex 450256 GRUCOM I - Telefax 0434 - 998631

CASAGRANDE GROUP

AGENTE/DEALER