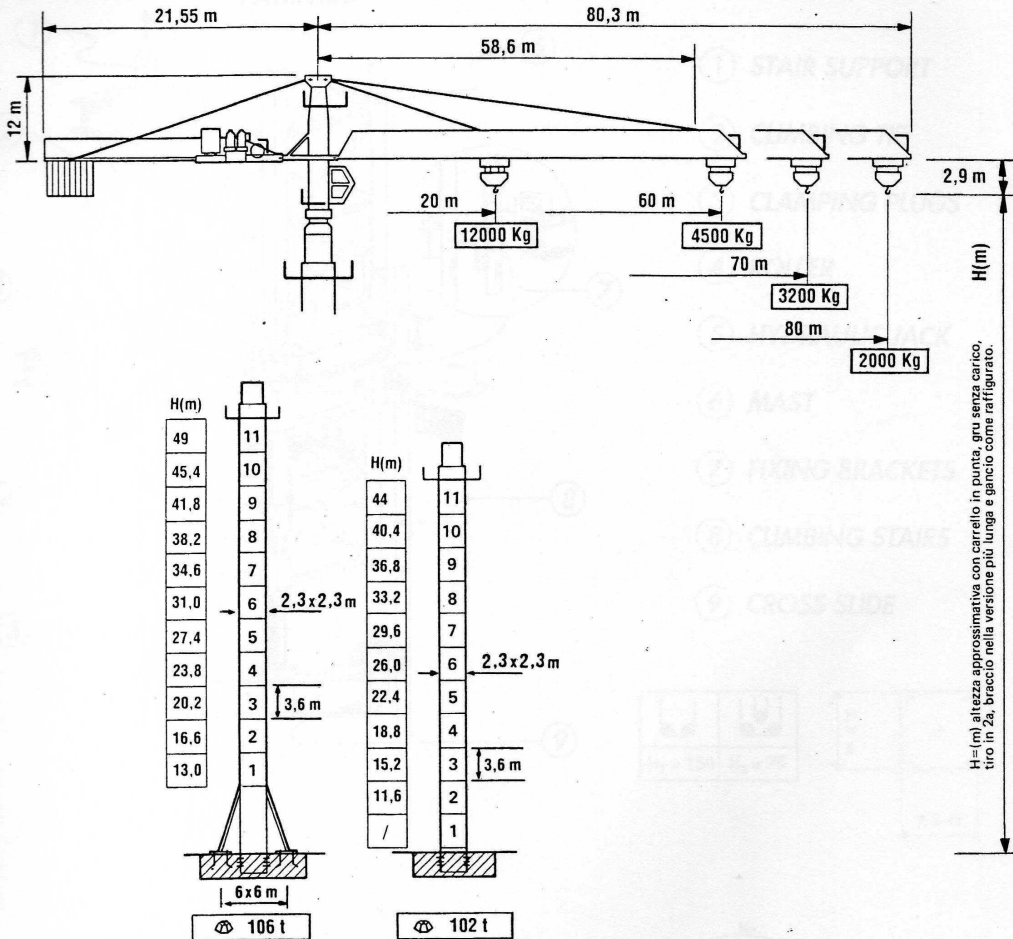


Dimensioni - Cotes - Dimensions - Abmessungen - Dimensiones

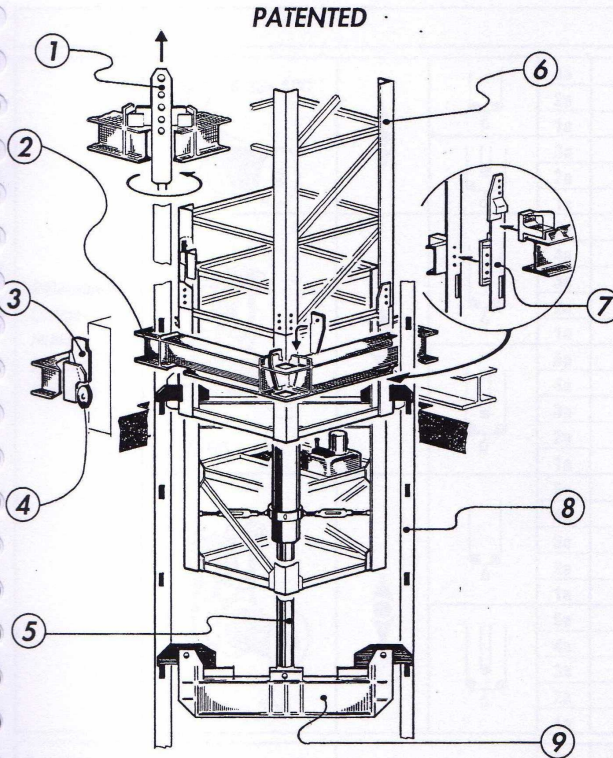


H=(m) altezza approssimativa con carrello in punta, gru senza carico, tiro in 2a, braccio nella versione più lunga e gancio come raffigurato.

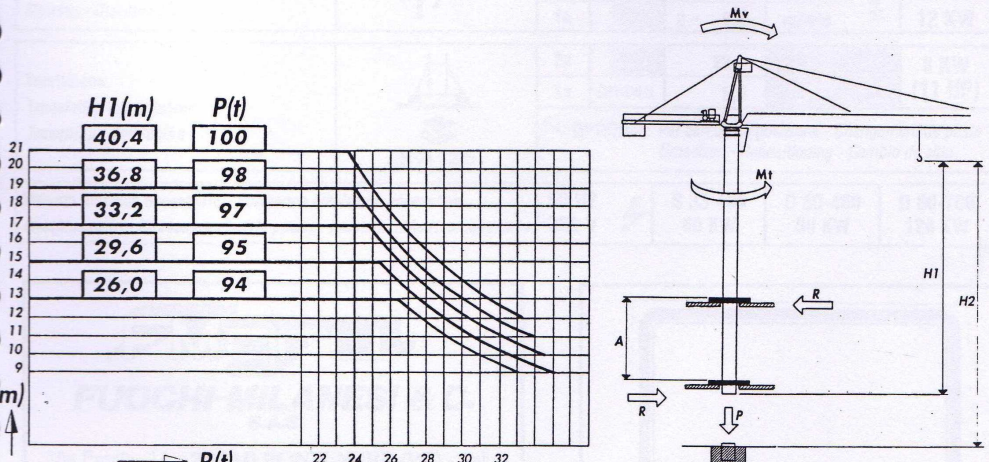
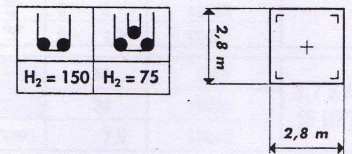
⊕ = Peso a vuoto - Poids de constructions - Konstruktionsgewicht - Dead weight

Length of jib (Slewing radius) m	Max. capacity m/kg	Radius and capacity																						
		18.4	21.2	24	26.8	29.6	32.4	35.2	38	40.8	43.6	46.4	49.2	52	54.8	57.6	60.4	63.2	66	68.8	71.6	74.4	77.2	80
80 (R = 81.4)	2-18.4 12000	12000	11000	9500	8500	7300	6800	6200	5700	5200	4800	4300	4100	3800	3600	3350	3100	2950	2700	2450	2320	2200	2100	2000
74.4 (R = 75.8)	2-21.2 12000	12000	12000	10800	9600	8550	7800	7100	6550	6000	5500	4950	4700	4350	4050	3800	3500	3250	3050	2900	2750	2600		
68.8 (R = 70.2)	2-24 12000	12000	12000	12000	10700	9800	8800	8000	7400	6800	6300	5600	5300	4900	4500	4200	3900	3600	3400	3300				
63.2 (R = 64.6)	2-24 12000	12000	12000	12000	10900	10000	9000	8200	7550	6900	6400	5700	5400	5000	4700	4350	4050	3700						
57.6 (R = 59)	2-24 12000	12000	12000	12000	11000	10200	9400	8500	7850	7150	6500	5800	5500	5100	4850	4500								
52 (R = 53.4)	2-26.8 12000	12000	12000	12000	12000	11100	10000	8800	8000	7200	6600	5900	5600	5200										

Climbing crane



- ① STAIR SUPPORT
- ② CLIMBING TIE
- ③ CLAMPING PLUGS
- ④ ROLLER
- ⑤ HYDRAULIC JACK
- ⑥ MAST
- ⑦ FIXING BRACKETS
- ⑧ CLIMBING STAIRS
- ⑨ CROSS SLIDE



FMGRU

MI 2080K

**GRU A TORRE PER CANTIERI EDILI
TOWER CRANES FOR CONSTRUCTION SITES
STATIC & INTERNAL CLIMBING**

*Complies with following international standards
DIN 15018 H1 B3; UNI CNR 10011-10021; FEM*

Montaggio idraulico

Hydraulic mounting

Montage hydraulique

Montaje hidráulico

Hidraulische lagerung

Cabina panoramica rotante

Rotating panoramic cabin

Cabine panoramique tournante

Cabina panoràmica con rotaciòn

Drehende aussichtskabine

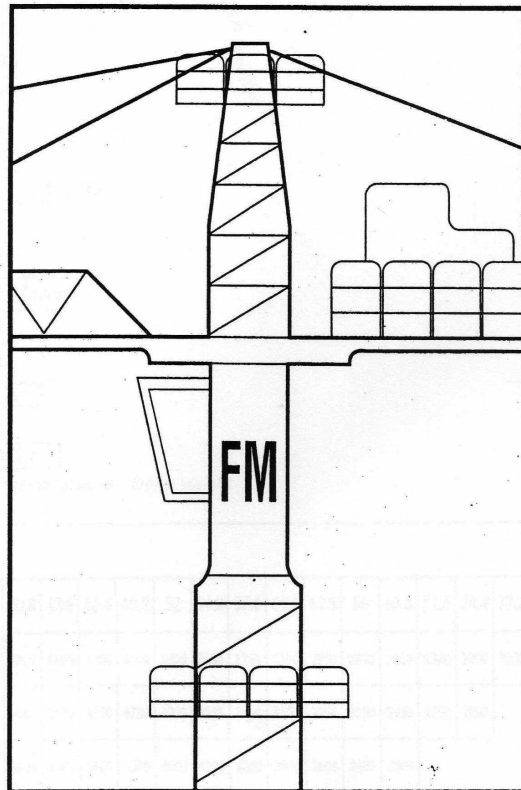
Rotazione elettronica

Electronic slewing

Orientation electronique

Rotaciòn elèctronica

Elektronische drehung



MI 2080K T23 P12