

12톤 Luffing Crane의 최강자 —

LUFFING CRANE

**HKL1250**

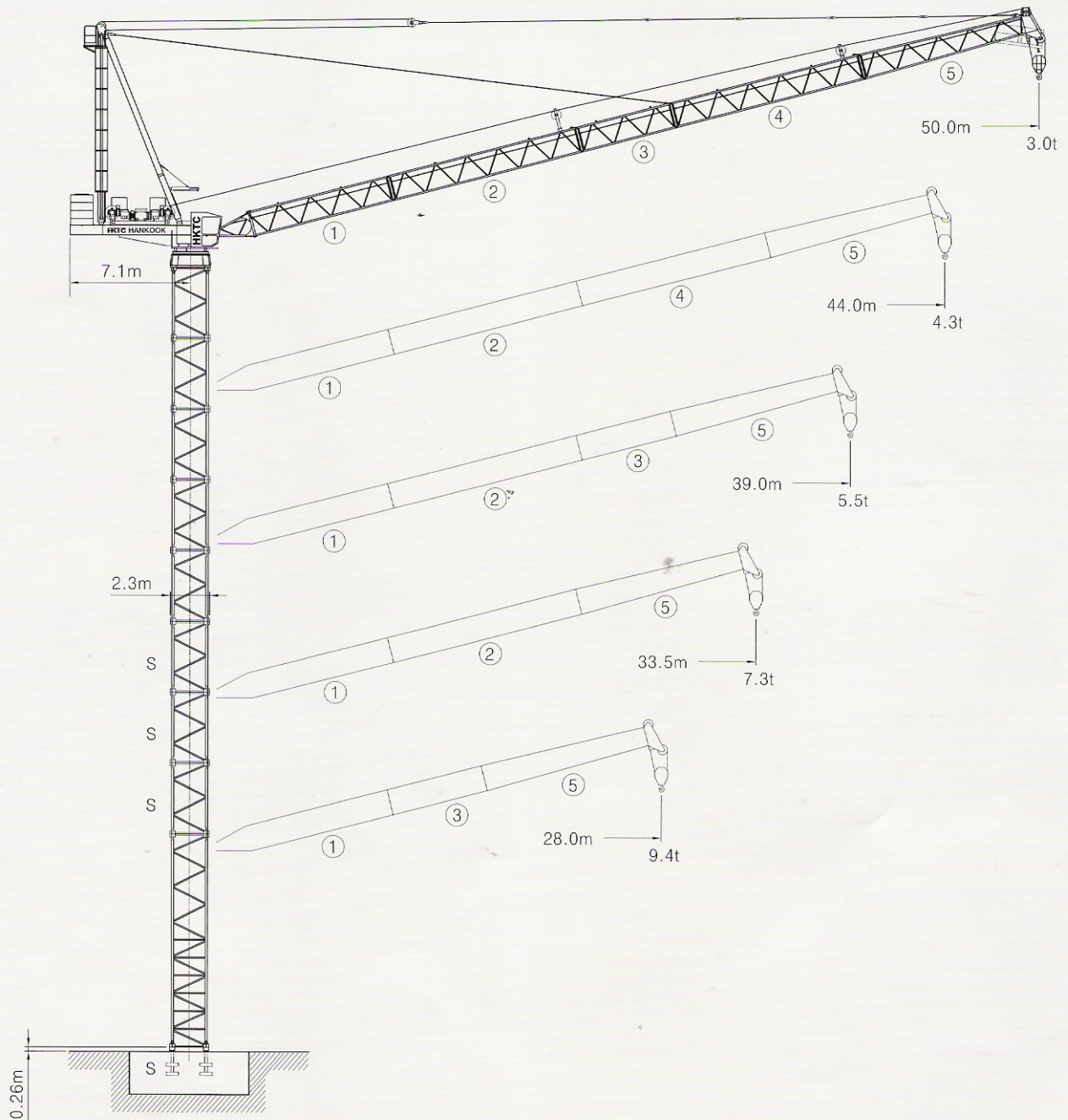
HKL1250 LUFFING CRANE

**HANKOOK TOWER CRANE**



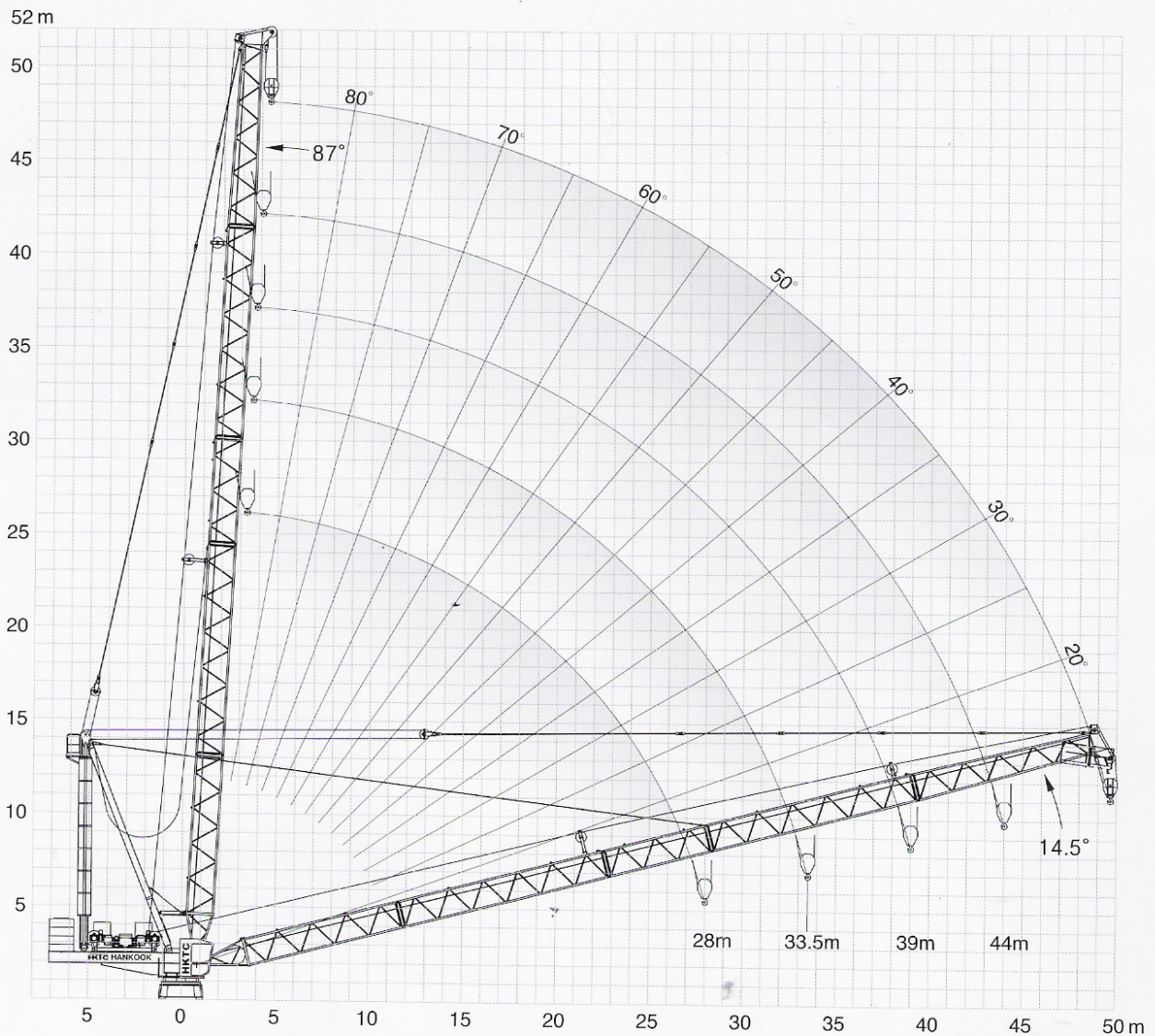
# LUFFING CRANE

# HKL1250



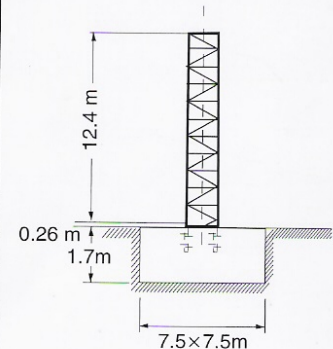


# Radius and Hoisting height











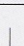
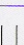
## Tower height

Number of tower sections	290HC Tower Section(2.3×2.3×4.14m)	
	Jib length	
	28.0 / 33.5m	39.5 / 44.0 / 50.0m
0	12.7	12.7
1	16.8(s)	16.8(s)
2	21.0(s)	21.0(s)
3	25.1(s)	25.1(s)
4	29.3	29.3
5	33.4	33.4
6	37.5	37.5
7	41.7	41.7
8	45.8	45.8
9	50.0	

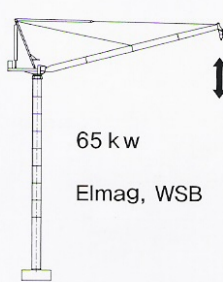




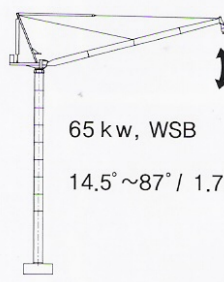
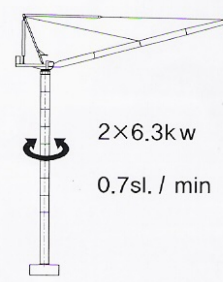


# Radius and capacity

Length of jib		MAX. Capacity	Radius and capacity																
			Radius(m)		m/kg														
			20	22	24	26	28	30	32	33.5	35	37	39	42	44	46	48	50	
50m		4.4-34m 6200kg	6200	6200	6200	6200	6200	6200	6200	6200	6200	6140	5590	5140	4510	4150	3810	3510	3230
		4.4-21m 12000kg	12000	11900	10530	9380	8410	7570	6840	6360	5910	5380	4910	4280	3920	3580	3280	<b>3000</b>	
44m		4.4-36m 6200kg	6200	6200	6200	6200	6200	6200	6200	6200	6200	6200	6080	5610	4990	4630			
		4.4-22m 12000kg	12000	12000	10850	9720	8760	7930	7210	6730	6290	5770	5300	4680	<b>4320</b>				
39m		4.4-37m 6200kg	6200	6200	6200	6200	6200	6200	6200	6200	6200	6200	5830						
		4.4-22m 12000kg	12000	12000	11000	9890	8940	8120	7410	6940	6500	5980	<b>5520</b>						
33.5m		4.4-33.5m 6200kg	6200	6200	6200	6200	6200	6200	6200	6200									
		4.4-22m 12000kg	12000	12000	11330	10230	9300	8490	7790	<b>7320</b>									
28m		4.4-28m 6200kg	6200	6200	6200	6200	6200												
		4.4-23m 12000kg	12000	12000	11420	10330	<b>9410</b>												

# Driving unit speed

Hoisting	Gear			
	kg	m/min		
 <p>65 kw Elmag, WSB</p>		1	12000	1.4 / 21.0
		2	5350	3.2 / 48.0
		3	2200	6.7 / 100.0
		1	6200	2.8 / 42.0
		2	2680	6.4 / 96.0
		3	1100	13.4 / 200.0

Luffing	Slewing
 <p>65 kw, WSB 14.5° ~ 87° / 1.7min</p>	 <p>2×6.3kw 0.7sl. / min</p>