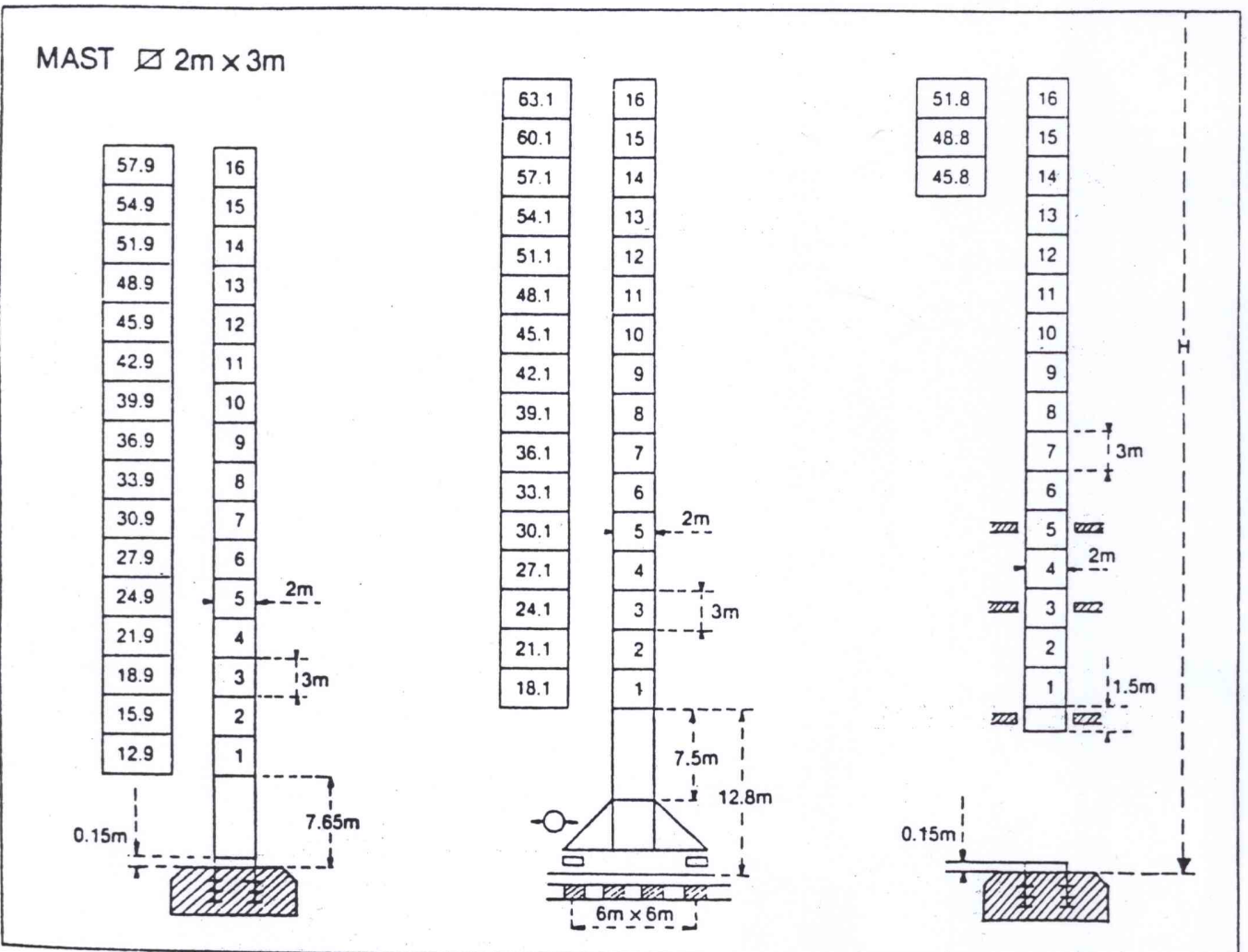
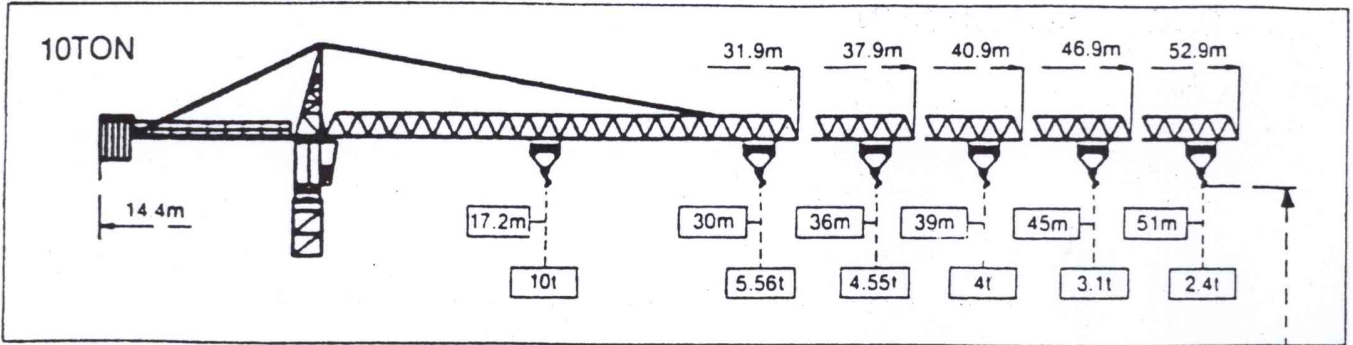


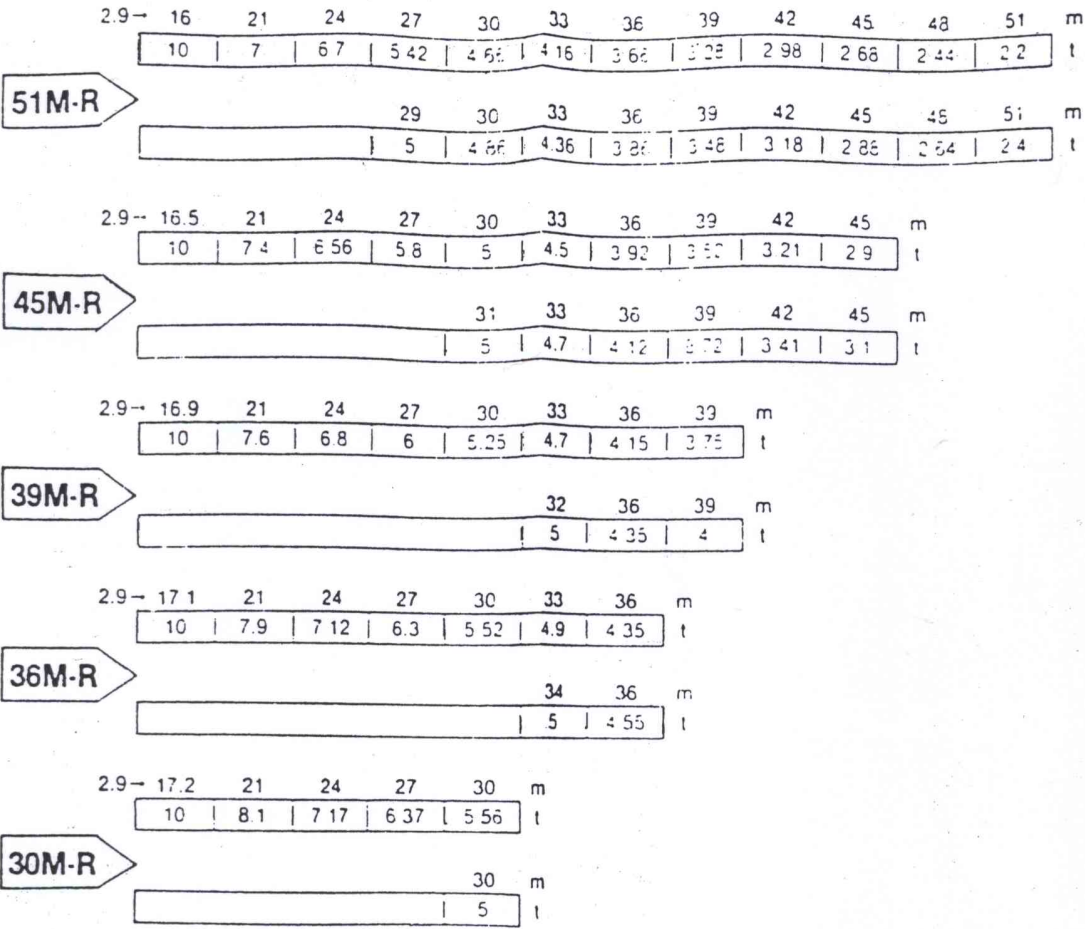
HT-200



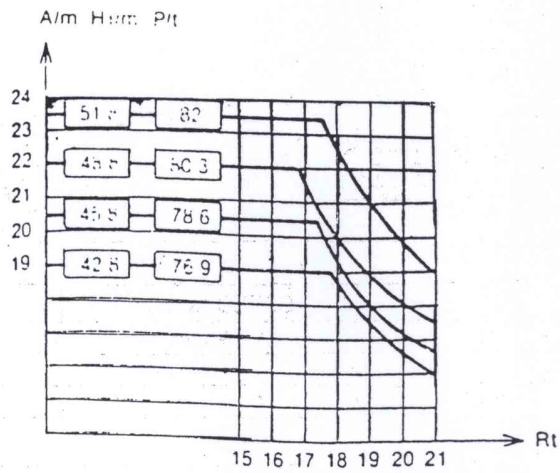
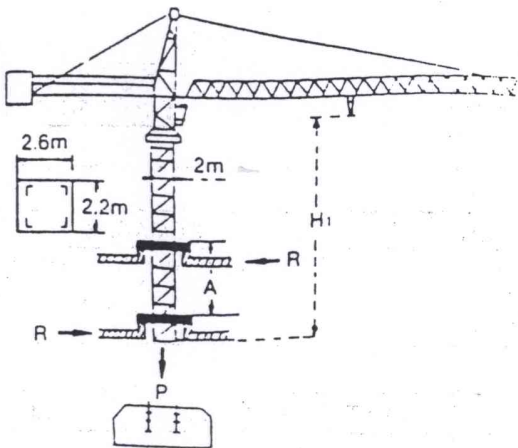
	SPEED (M/min)	MOTOR	REMARKS
SLEWING	0-0.9 tr/min	2 x 7.5 KW	TCTAL POWER REQUIREMENT 100KVA MAIN SUPPLY 440V 3Ph 60Hz
JIB TROLLEY	0-70 m/min	7.5 KW	
TRAVELLING	0-25 m/min	4 x 3.7 KW	

HOISTING MOTION		SPEED (M/min)		RATED LOAD (KG)	MOTOR
SINGLE	SM	LOW	0-32	5,000	45 KW
		HIGH	0-64	2,500	
DOUBLE	DM	LOW	0-16	10,000	
		HIGH	0-32	5,000	

# LOAD DISTRIBUTION

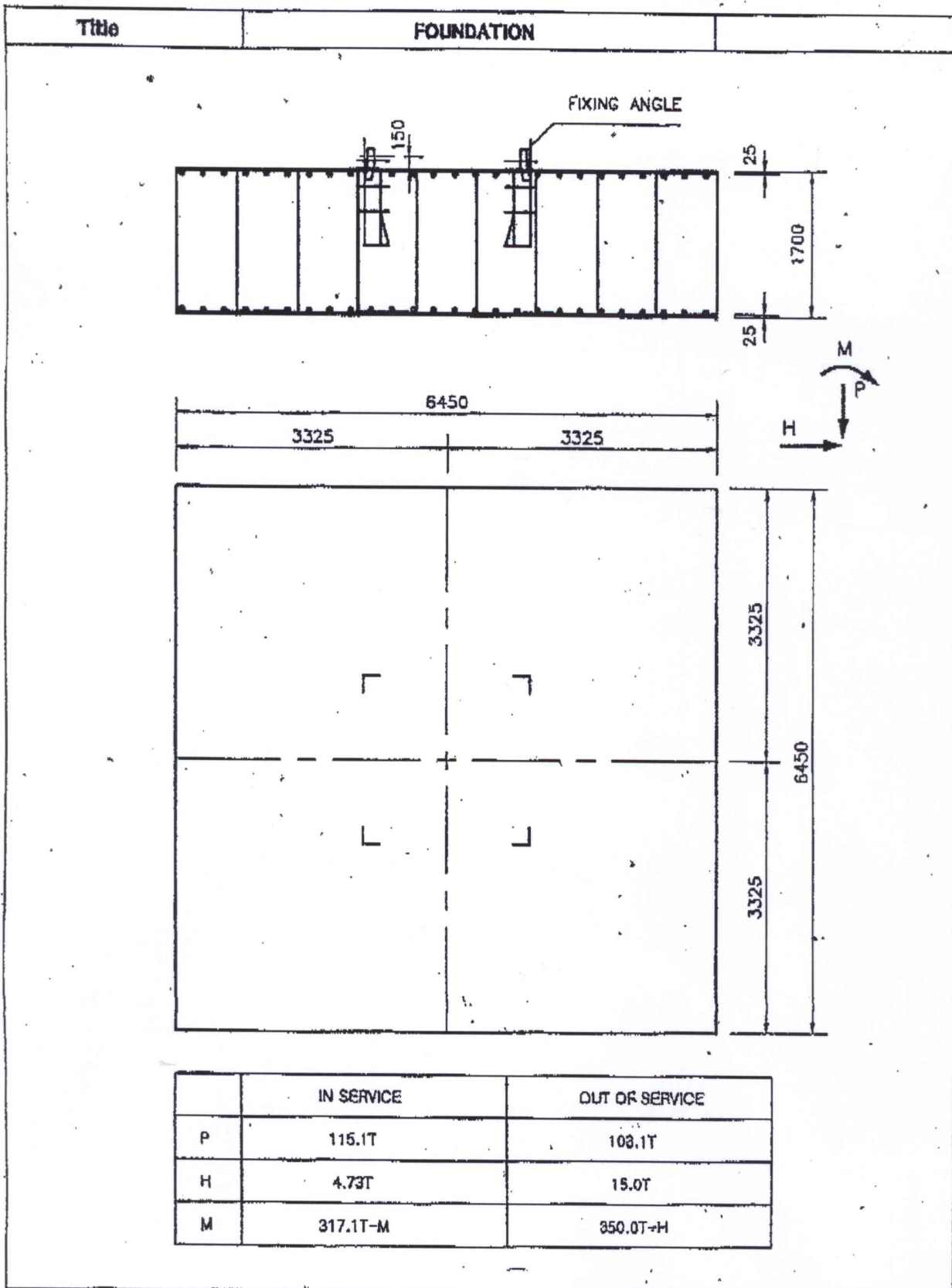


# CLIMBING TYPE (상승형)



A: (Distance between collars) 상승형 칼라간격  
 H: (Crane height) 작업높이  
 P: (Crane Weight (in service)) 크레인 자중  
 R: (Horizontal reaction) 앞으로 미치는 힘

# HT 200 / 300 / 320 / 350 / 380



원본대조필

# HT 200 / 300 / 320 / 350 / 380

Title		CONCRETE BLOCK				
NO.	Q'TY	SPACING	FORM	DIA	UNIT LENGTH	TOTAL LENGTH
1 (상부근)	55	118	200 $\left\langle \begin{array}{c} 6,400 \\ \hline \end{array} \right\rangle$ 200	Ø 20	7,000	385,000
2 (상부근)	55	118	200 $\left\langle \begin{array}{c} 6,400 \\ \hline \end{array} \right\rangle$ 200	Ø 20	7,000	385,000
3 (하부근)	55	118	200 $\left\langle \begin{array}{c} 6,400 \\ \hline \end{array} \right\rangle$ 200	Ø 25	7,100	390,500
4 (하부근)	55	118	200 $\left\langle \begin{array}{c} 6,400 \\ \hline \end{array} \right\rangle$ 200	Ø 25	7,100	390,500
5 (수직근)	168	472	1650 $\left\{ \begin{array}{l} 125 \\ \hline 125 \end{array} \right.$	Ø 20	1,800	321,000

- \* CONCRETE DENSITY : 2.4 g/cm<sup>3</sup>
- \* FREE STANDING HIGHT : 54.9 M
- \* REQUIRED GROUND PRESSURE : 2.46 kg/cm<sup>2</sup>
- \* THE REINFORCEMENT OF A CONCRETE BLOCK IS COMPOSED OF AND UPPER & LOWER LAYER (1,2,3,4) CONNECTED BY PINES(5) EACH LAYER COMPRISES TWO CROSSED BEDS.



원본대조필

