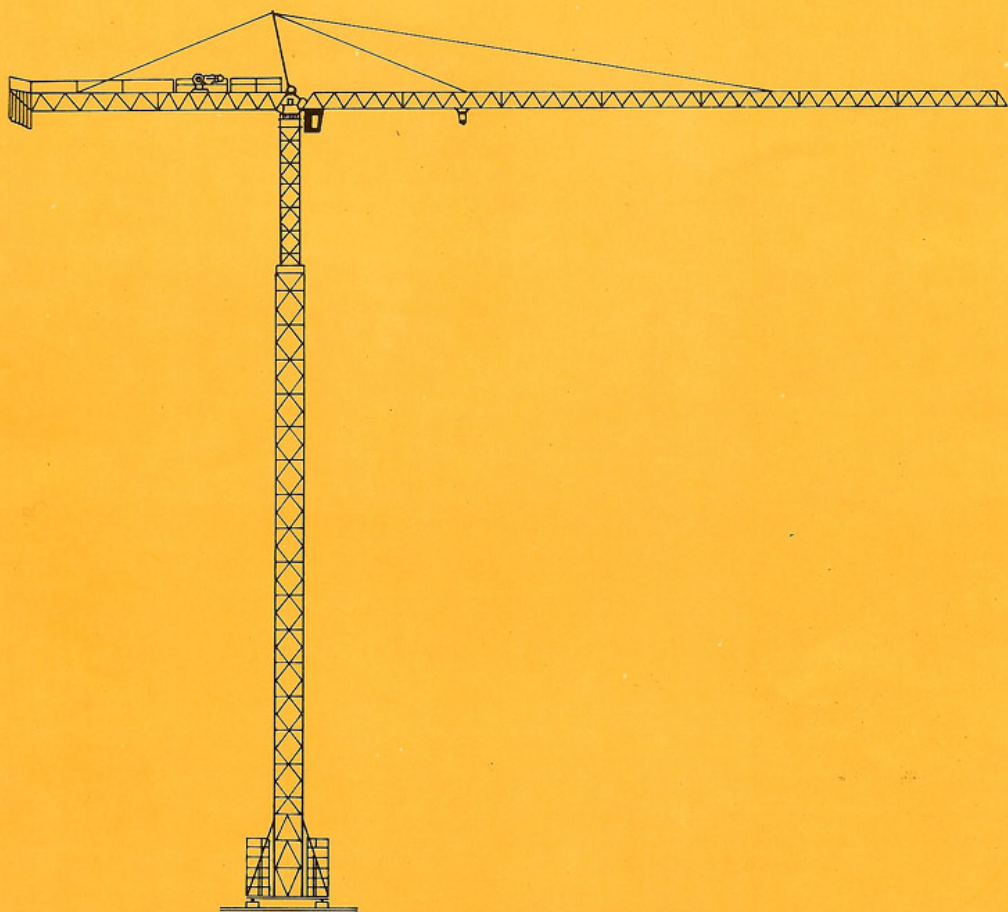


# TOWER CRANE K50/50



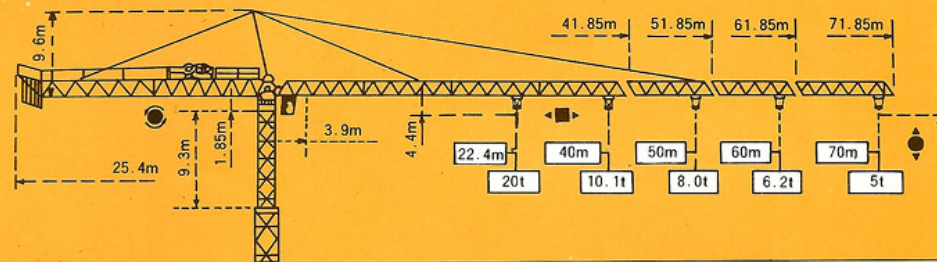
## K50/50 自升塔式起重機



中國瀋陽建築機械廠  
SHENYANG BUILDING MACHINERY FACTORY CHINA

### TOWER CRANE K50/50

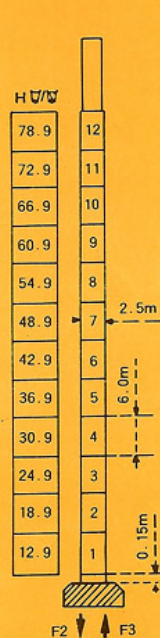
#### 外形尺寸 Dimensions



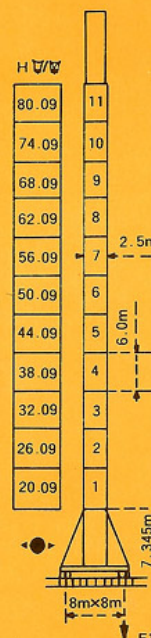
塔身截面 Mast: 2.5m × 2.5m

PA 852

YA 851



F2	● 184 t	■ 200 t
F3	● 115 t	■ 136 t
	117 t	



F1	● 106 t	■ 110 t
	137 t	

F 反力 Reactions

● 工作狀態  
■ 非工作狀態

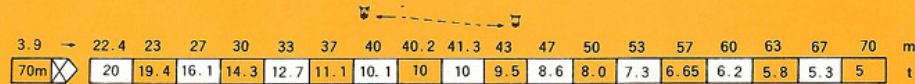
In service  
Out of service

自重

Without load and ballast with longest jib and maximum height.

## 載荷特性 Load diagrams

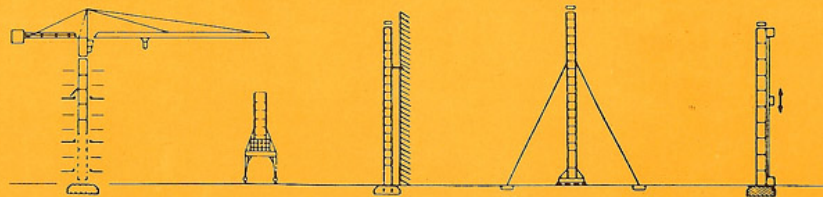
 起重臂 jib



☐/☒ 標準小車可使用2/4倍率  
繩（使用四倍率繩時，應從  
二倍率的載荷中減去0.35t）。  
Standard trolley 2/4 fall.  
(When using ☒substract  
0.35 t from the loads ☐).

## 可變換的其它安裝方式 Mounting possibilities

採用這些方式  
同製造商協商  
Consult us



最大起升高度  
Hmax

270m

120m






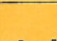




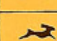



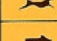

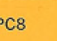



K50/50 自升塔式起重機是消化吸收引進國外先進技術，結合國內塔機使用數十年經驗而研制設計的上迴轉自升塔式起重機，設計新穎、機構先進、性能可靠。具有軌行、附着、固定和內爬等四種使用型式。該機的最大工作幅度 70 米，最大起重量 20 噸，公稱起重力矩 4000kN.m，附着式最大起升高度 120 米，行走式最大起升高度 80.09 米，內爬式最大起升高度 270 米，平衡重 26 噸。

歡迎廣大用戶選用。

K50/50 self-raising tower crane is manufactured by means of combining introduction of foreign advanced technology with the experiences we got from operation of our own-designed tower crane for several decades. tower crane with top-slewing, having novel design, advanced mechanism and reliable performance, can provide you with 4-type: travelling attached, stationary, and inside-climbing. The crane's max. working range is 70m, max. hoisting capacity 20t, nominal moment 4000 kN.m. The max. height under hook is 120m when the tower crane is stationary, max height 80.09m when the tower crane in travelling, max. height 270m when the tower crane in climbing. And the tower crane counter ballast is 26t.

Welcome to purchase

## 機構特性 Mechanisms specification

					m/min	t		ch-PS hp	kw
起升 Hoisting	標準型 Standard hoist winch	70RCS 50A			0→25	10	550m * >550m	70	51.5
					0→50	5			
				0→12.5	20				
				0→25	10				
	選擇型 Optional winch	120LMD 50S			0→39	10	545m * >545m	120	88
					0→78	5			
				0→156	2.5				
				0→19.5	20				
變幅 Trolleying		8DPC8		7.0 28.0 59.0					8
回轉 Slewing		OMD85		0→0.8 tr/min U/min-rpm				2×12	2×9
行走 Traveling				16→32					6×5.2
電源 Mains supply			~380V·50Hz / ~440V·60Hz						
供電容量 Necessary electric power			RCS: 90kVA LMD: 150kVA						
* 在這種情況下要同製造商協商 Consult us									

此種參數以修改為準 Subject to modification

GB/T 13752-92



瀋陽建築機械廠

SHENYANG BUILDING MACHINERY FACTORY

廠址：中國·瀋陽大東區東北大馬路 272 號

電話：(024) 88093933 (總機) 88091979 (銷售處)

88902637 (進出口部) 88095263 (外經處)

傳真：(024) 88093057 電報掛號：7788 郵政編碼：110044

ADDRESS: NO. 272 Dongbei Damalu,  
Dadong District, Shenyang CHINA

Telephone: (024) 88093933 (Switchboard), 88091979 (B. Dept.),

88902637 (I/E. Dept.) 88095263 (E. B. Dept.),

Fax: (024) 88093057 Cable: 7788 Postcode: 110044



HAN SHI ENGINEERING CO., LTD.  
TEL : 407-6400  
FAX : 406-9752

PROJECT TITLE

K50/50  
FOUNDATION PLAN

DESIGNED BY

DRAWN BY

CHECKED BY

REVISION

DATE

SCALE

DATE

PROJECT NO

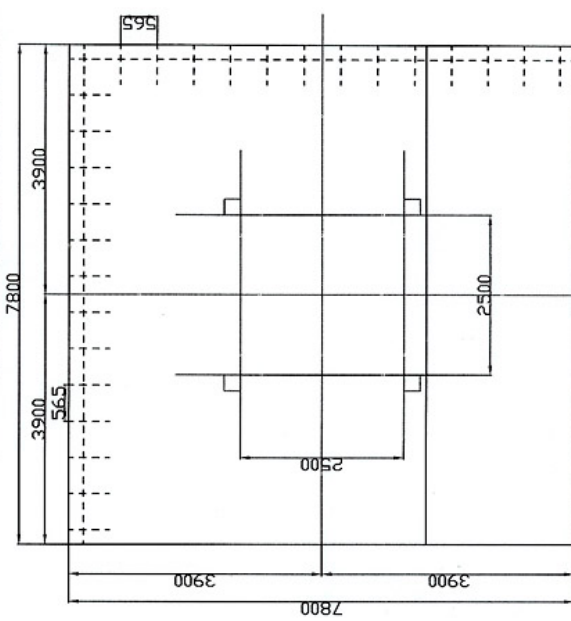
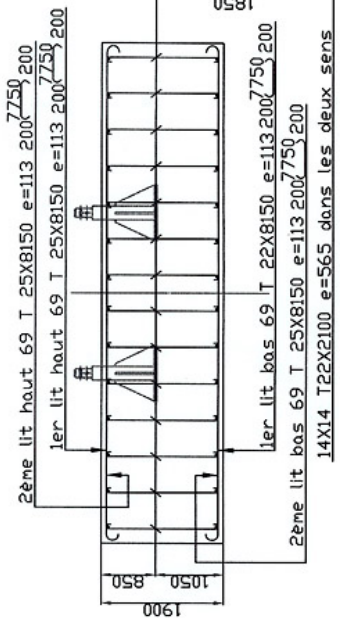
SHEET NO

SCALE 1/60

DATE

PROJECT NO

SHEET NO



L: 7800 17800 H: 1900 V: 116m<sup>3</sup>  
D: 2,4

