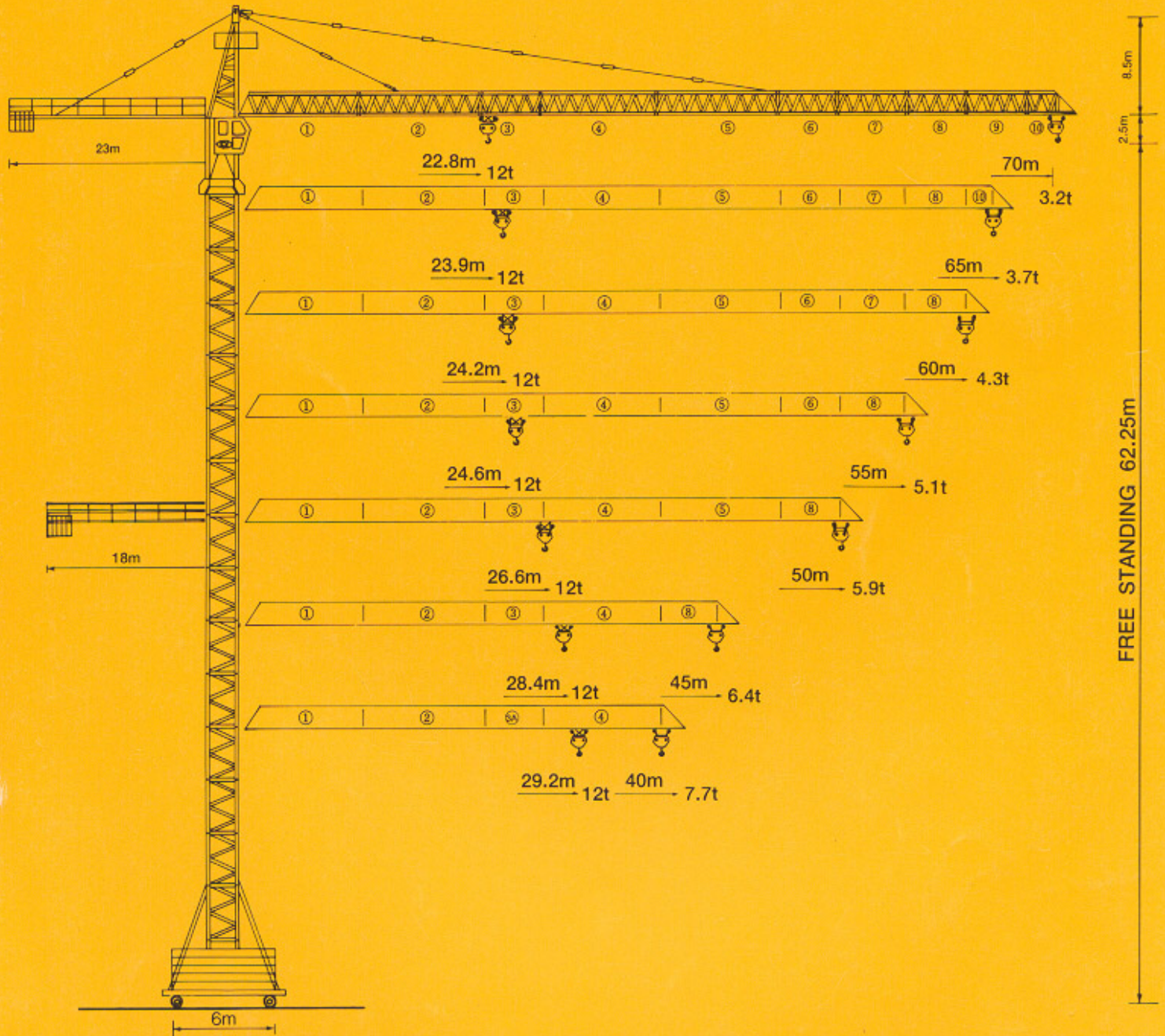




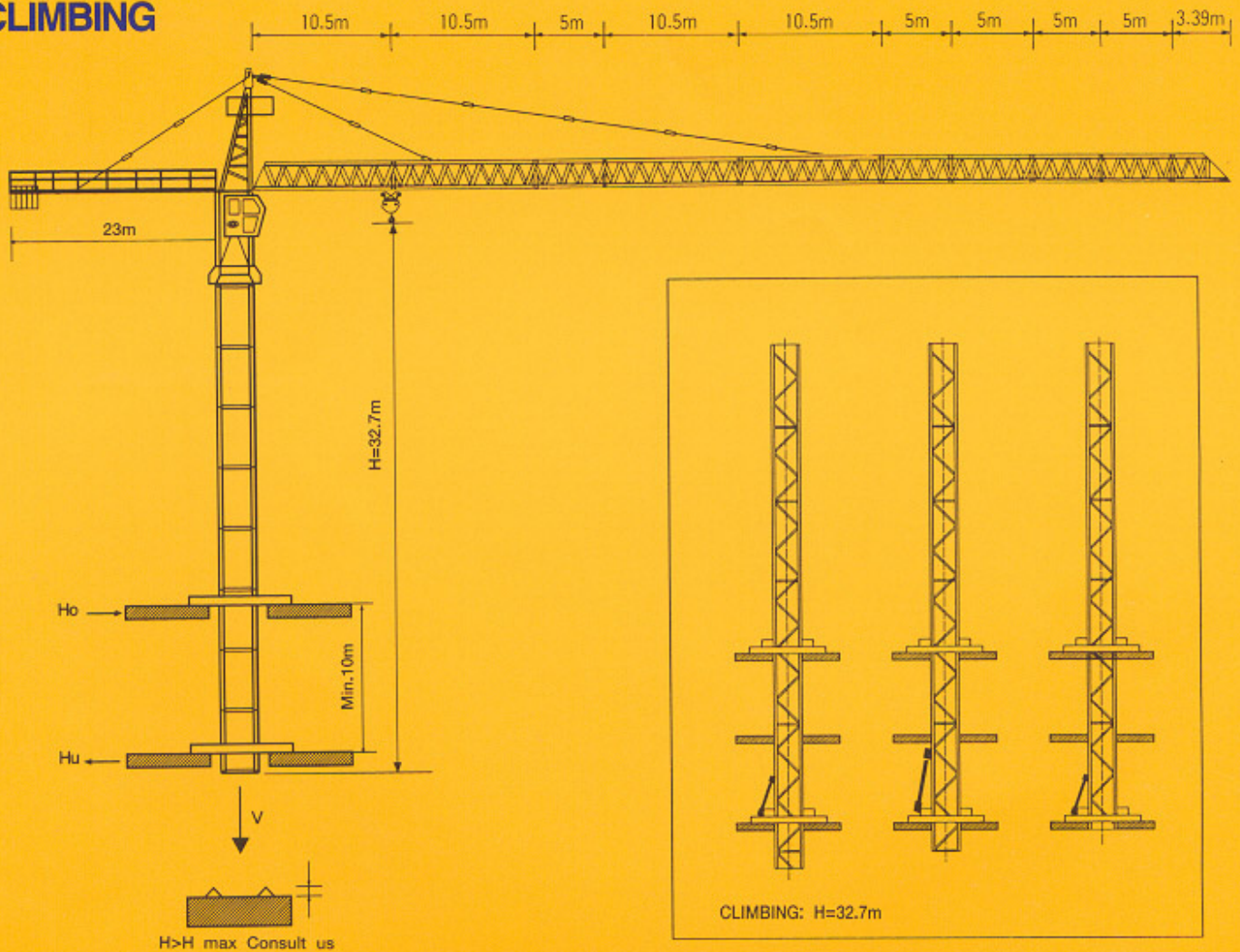
KUMKANG TOWER CRANE






KTC 7012 GRUCOMEDIL




CASAGRANDE GROUP

CLIMBING



POWER SOURCE	WINCH TYPE	THREE PHASE CURRENT
84.5Kw	AWLR706	380V - 60Hz

Winch	m/min	t	Hp	Kw		
AWLR706		0 - 46	6	70	52	430 m max
		0 - 60	4.6			
		0 - 82	3.5			
		0 - 116	2.4			
		0 - 23	12			>430 m Consult us
		0 - 30	9.2			
		0 - 41	6.8			
		0 - 58	4.8			

TROLLEY		C3V	0-12-36-72m/min	6/5Kgm	10Kw
SLEWING		GVP	0.7 R.P.M	3 × 10.5Kgm	3 × 7.5Kw
TRAVELLING		TR-TC	0-12-24m/min	4 × 5.4Kgm	4 × 4Kw