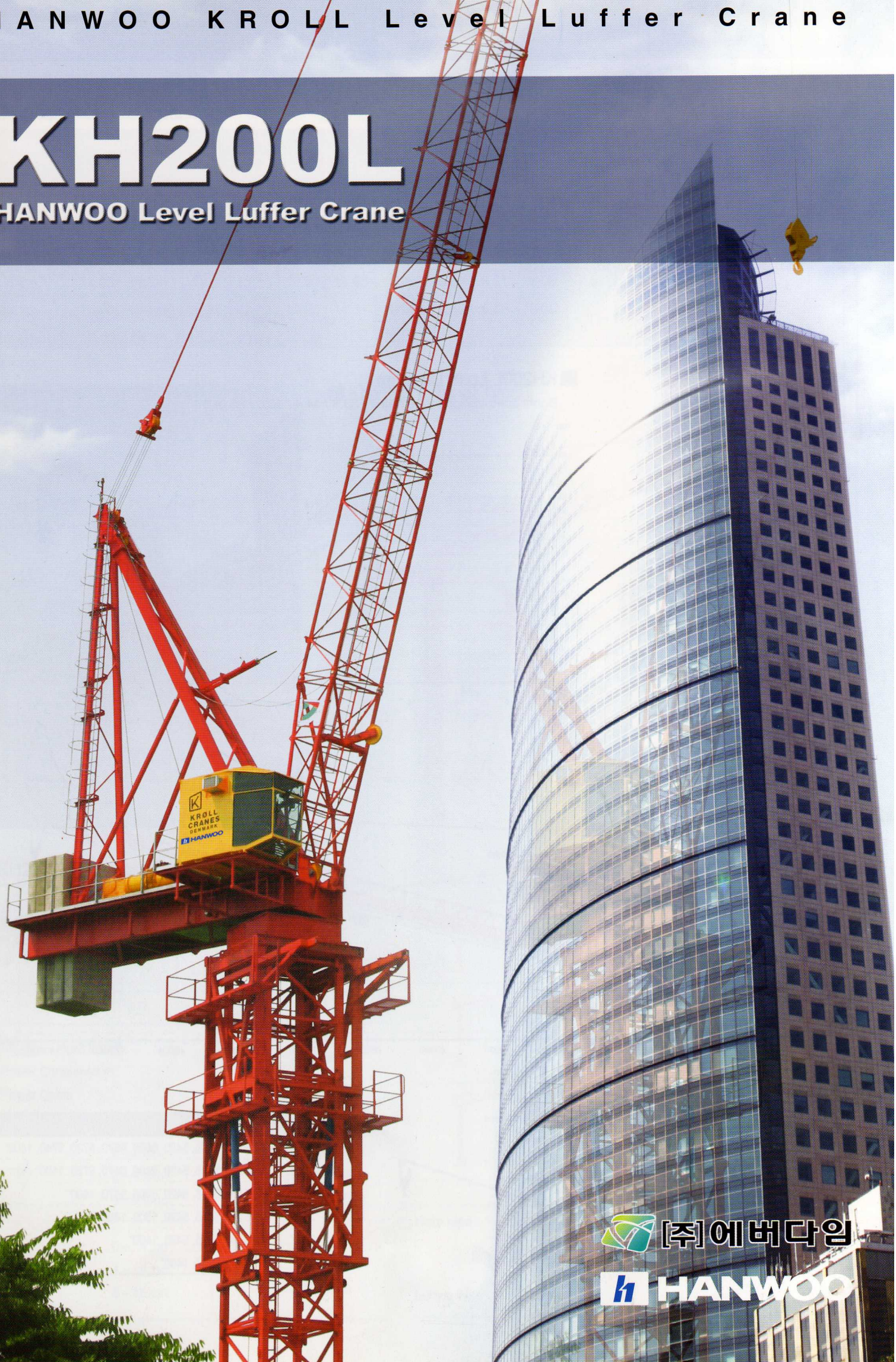


HANWOO KROLL Level Luffer Crane

# KH200L

HANWOO Level Luffer Crane

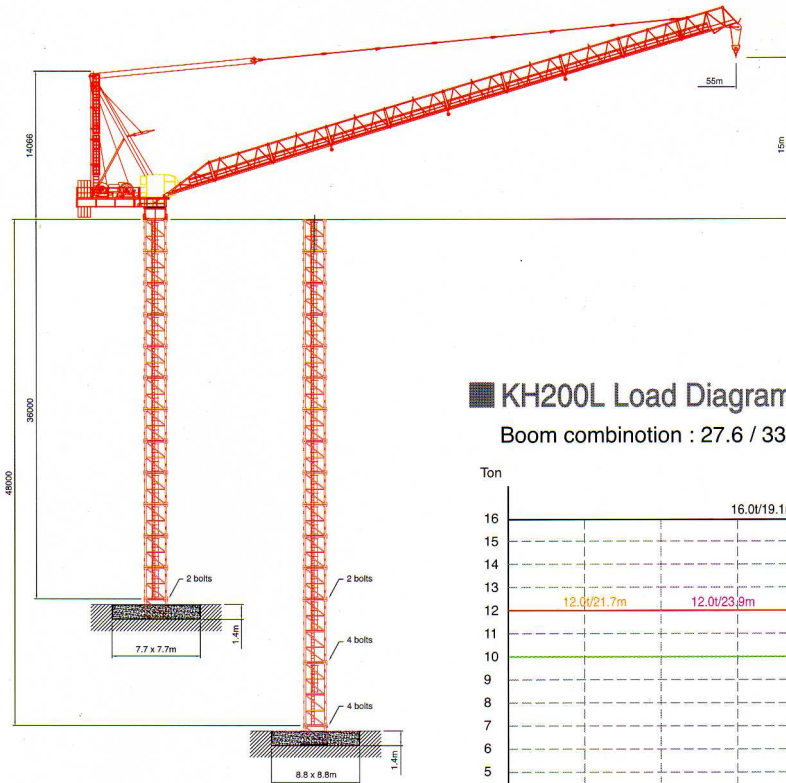


 [주]에버다임

 HANWOO

# HANWOO KH200L Level Luffer Crane

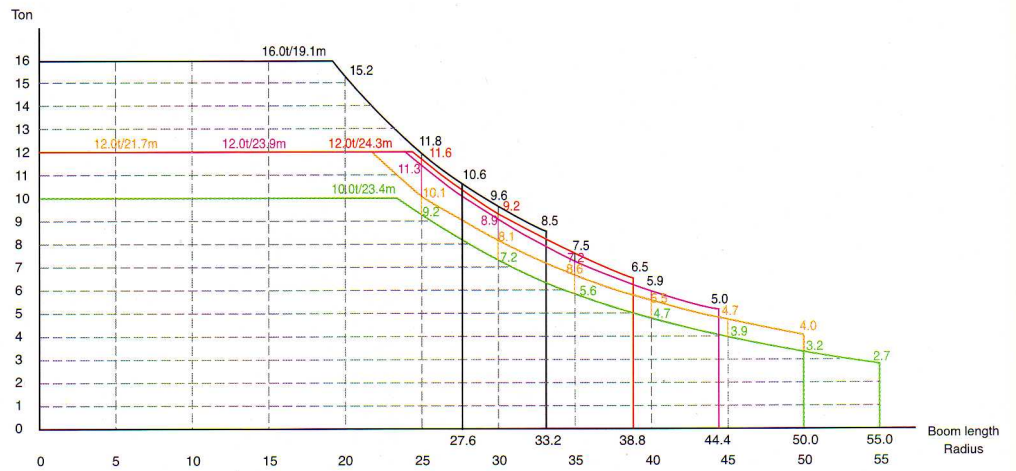
## KH200L Assembly



- Free Mast Height : 36 m (2 Bolts)
  - 48 m (4 Bolts)
  - Max. Jib Length : 55 m
  - Max Mast Height : 204m
- Design Wind Speeds  
In Service : 20 m/s  
Out of Service : 45 m/s

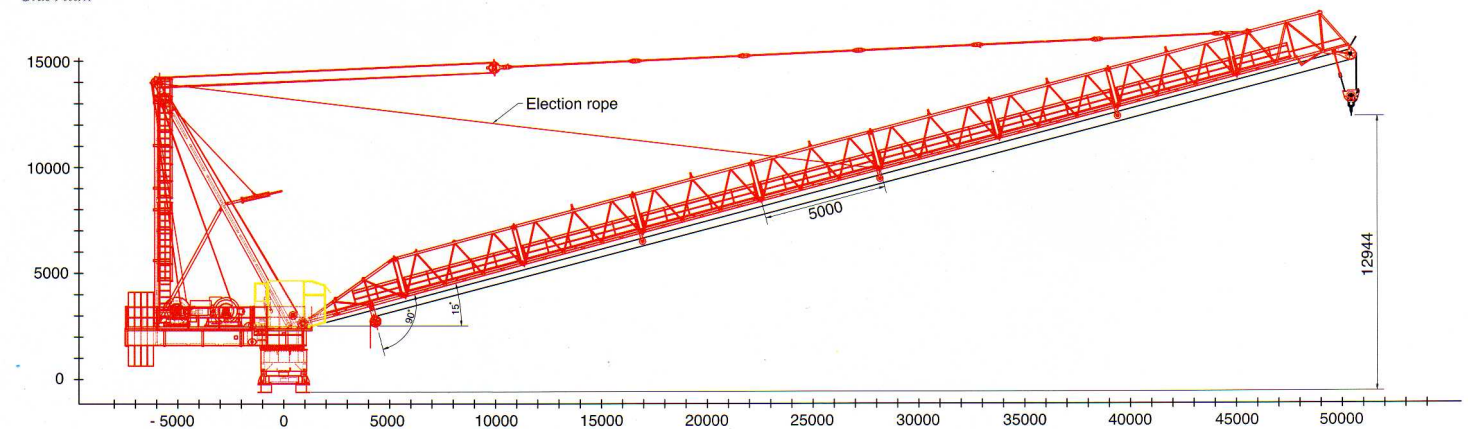
## KH200L Load Diagram

Boom combination : 27.6 / 33.2 / 38.8 / 44.4 / 50.0 / 55.0M

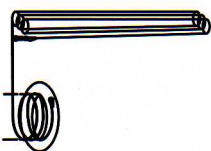


## KH200L Jib Stay Combination

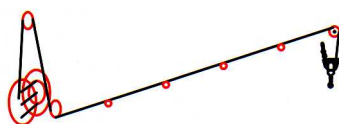
Unit : mm



Luffing rope



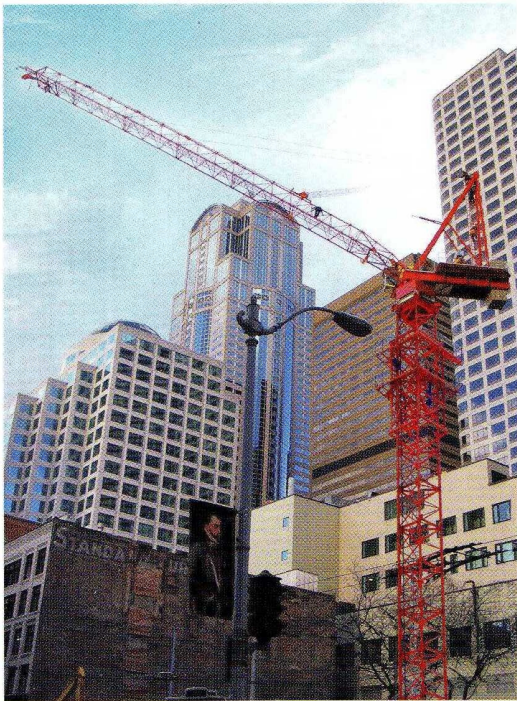
Hoist rope



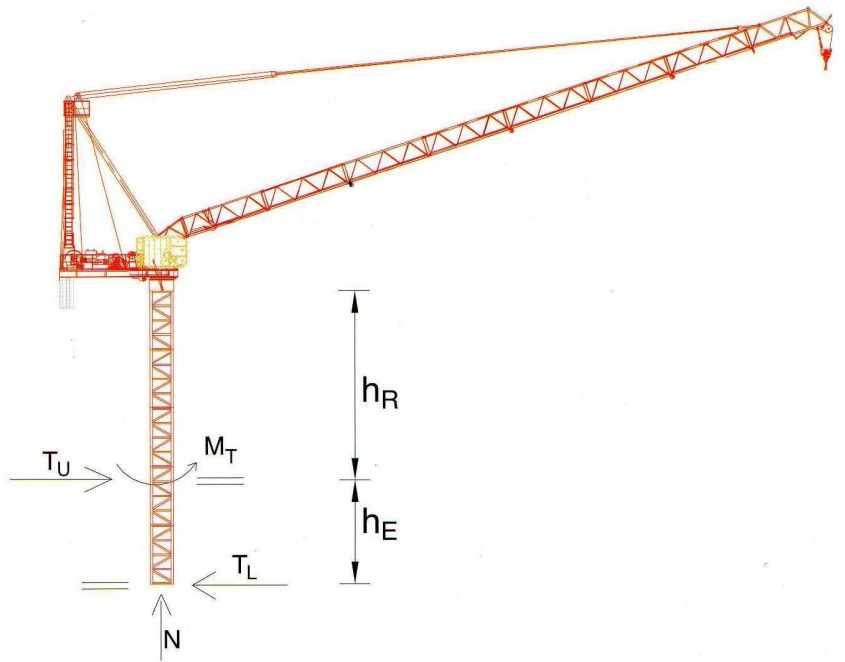
Jib (M)	Stay combination (mm)
55.0"	6100, 5145, 5420, 5600, 5670, 5720, 5740, 1400"
50.0"	6100, 5145, 5420, 5600, 5670, 5720, 1400"
44.4"	6100, 5145, 5420, 5600, 5670, 1400"
38.8"	6100, 5145, 5420, 5600, 1400"
33.2"	6100, 5145, 5420, 1400"
27.6"	6100, 5145, 1400"

### KH200L Radius & Capacity









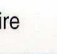
Jib Length m	Maximum load at	m/t														
		20.2	22.0	24.0	26.0	27.6	28.0	30.0	33.2	35.0	38.8	40.0	44.4	50.0	55.0	
55.0m	10.00t/23.4m	10.0	10.0	9.70	8.75	8.08	7.93	7.22	6.25	5.80	4.97	4.74	4.00	3.24	2.70	
50.0m	12.00t/21.7m	12.0	11.78	10.62	9.64	8.96	8.80	8.08	7.10	6.62	5.77	5.53	4.77	4.00		
44.4m	12.00t/23.9m	12.0	12.00	11.94	10.78	9.97	9.79	8.92	7.76	7.20	6.18	5.90	5.00			
38.8m	12.00t/24.3m	12.0	12.00	12.00	11.05	10.25	10.06	9.21	8.06	7.51	6.50					
33.2m	16.00t/19.1m	15.20	13.67	12.39	11.31	10.56	10.39	9.58	8.50							
27.6m	16.00t/19.1m	15.20	13.67	12.39	11.31	10.56										



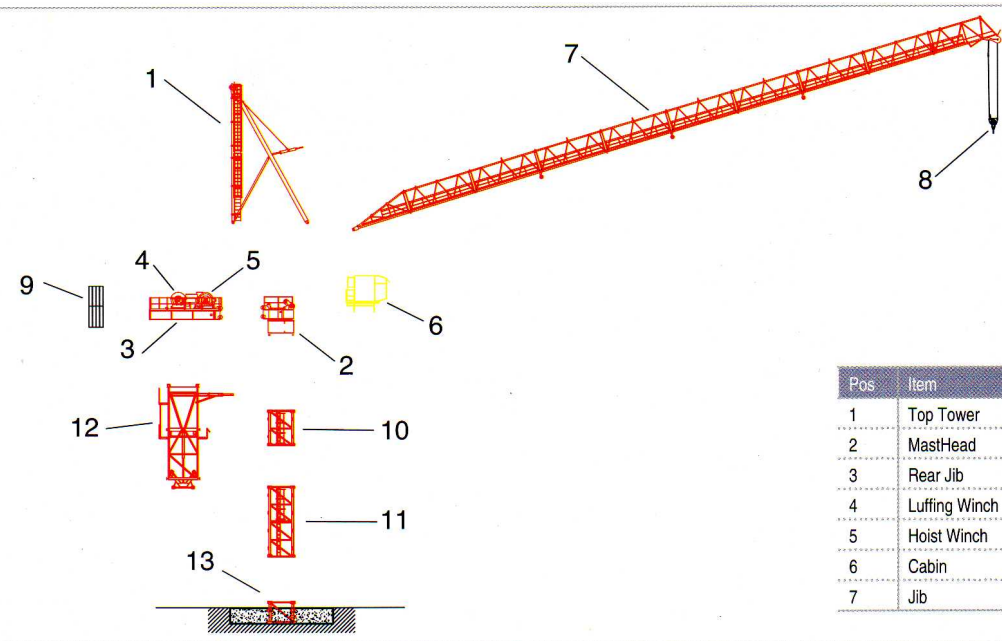
### KH200L Internal Type



### KH200L Technical Data

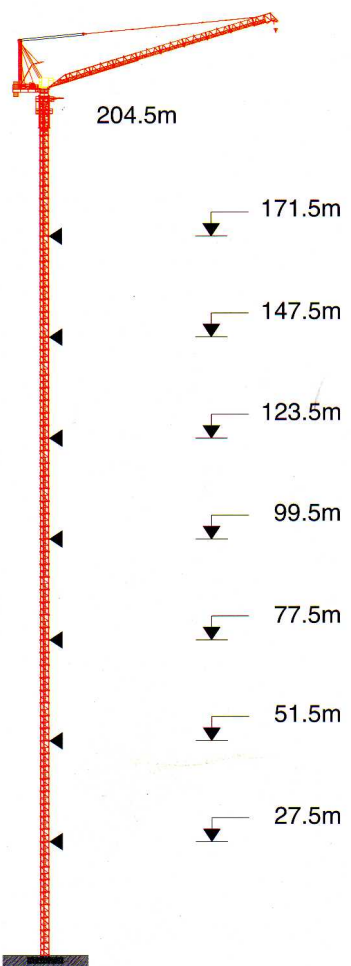
	3x440v 50Hz-60Hz	Control Voltage 24VDC - 220VAC		1 x 9 kW	0 - 0.7rpm
	Hoist Winch Power Consumption Power Cable	56kW 150kVA 60mm <sup>2</sup> 2PNCT (50mm <sup>2</sup> PNCT)		42 kW	Stepless 2: 00 min
	0 - 2 ton 2 - 4 ton 4 - 8 ton	0 - 106 m/min 0 - 66 m/min 0 - 36 m/min		4 x 3 kW	25 m/min
	0 - 4 ton 4 - 8 ton 8 - 16 ton	0 - 53 m/min 0 - 33 m/min 0 - 18 m/min	Hoist rope 	∅22 mm	
			Luffing Wire 	∅20 mm	

*Handwritten notes:*  
 2 (11/21/23) (K6 82)  
 1497 - 11/21/23  
 B480, -  
 2024/10/23 (11/23), 02/24/24



Pos	Item	Kg	Pos	Item	Kg
1	Top Tower	4178	8	Hook	418
2	MastHead	8482	9	Counter Weight	20000
3	Rear Jib	4700	10	3m Mast	1800
4	Luffing Winch	2000	11	6m Mast	2200
5	Hoist Winch	3100	12	C/Cage	7600
6	Cabin	1977	13	F/Anchor	900
7	Jib	7731			

**KH200L Tie Schedule**



**KH200L Load Chart**

Radius[m]	BOOM LENGTH											
	55.0m		50.0m		44.4m		38.8m		33.2m		27.6m	
	10t at 23.4m	12t at 21.7m	12t at 23.9m	12t at 24.3m	16t at 19.1m	16t at 19.1m						
18.0	2part [kg] 10000	1part [kg] 8000	2part [kg] 12000	1part [kg] 8000	2part [kg] 12000	1part [kg] 8000	2part [kg] 12000	1part [kg] 8000	2part [kg] 16000	1part [kg] 8000	2part [kg] 16000	1part [kg] 8000
19.0	10000	8000	12000	8000	12000	8000	12000	8000	16000	8000	16000	8000
20.0	10000	8000	12000	8000	12000	8000	12000	8000	15200	8000	15200	8000
21.0	10000	8000	12000	8000	12000	8000	12000	8000	14400	8000	14400	8000
22.0	10000	8000	11780	8000	12000	8000	12000	8000	13670	8000	13670	8000
23.0	10000	8000	11180	8000	12000	8000	12000	8000	12750	8000	12750	8000
24.0	9700	8000	10620	8000	11940	8000	12000	8000	12390	8000	12390	8000
25.0	9200	8000	10110	8000	11340	8000	11600	8000	11830	8000	11830	8000
26.0	8750	8000	9640	8000	10780	8000	11050	8000	11310	8000	11310	8000
27.0	8320	8000	9210	8000	10270	8000	10540	8000	10830	8000	10830	8000
27.6	8080	8000	8960	8000	9970	8000	10250	8000	10560	8000	10560	8000
28.0	7930	7930	8800	8000	9790	8000	10060	8000	10390	8000		
29.0	7560	7560	8430	8000	9340	8000	9620	8000	9970	8000		
30.0	7220	7220	8080	8000	8920	8000	9210	8000	9580	8000		
31.0	6900	6900	7750	7750	8530	8000	8830	8000	9220	8000		
32.0	6600	6600	7440	7440	8170	8000	8470	8000	8880	8000		
33.0	6320	6320	7150	7150	7830	7830	8130	8000	8560	8000		
33.2	6260	6260	7100	7100	7760	7760	8060	8000	8500	8000		
34.0	6050	6050	6880	6880	7500	7500	7810	7810				
35.0	5800	5800	6620	6620	7200	7200	7510	7510				
36.0	5560	5560	6380	6380	6910	6910	7220	7220				
37.0	5340	5340	6150	6150	6640	6640	6950	6950				
38.0	5130	5130	5930	5930	6380	6380	6700	6700				
38.8	4970	4970	5770	5770	6180	6180	6500	6500				
39.0	4930	4930	5730	5730	6130	6130						
40.0	4740	4740	5530	5530	5900	5900						
41.0	4550	4550	5340	5340	5680	5680						
42.0	4380	4380	5170	5170	5470	5470						
43.0	4220	4220	5000	5000	5270	5270						
44.0	4060	4060	4840	4840	5070	5070						
44.4	4000	4000	4770	4770	5000	5000						
45.0	3910	3910	4680	4680								
46.0	3760	3760	4530	4530								
47.0	3630	3630	4390	4390								
48.0	3490	3490	4260	4260								
49.0	3370	3370	4130	4130								
50.0	3240	3240	4000	4000								
51.0	3130	3130										
52.0	3010	3010										
53.0	2910	2910										
54.0	2800	2800										
55.0	2700	2700										

※상기 제원은 성능 개선을 위하여 예고 없이 변경될 수 있습니다.



Website : [www.hanwootnc.com](http://www.hanwootnc.com)

HTC 2006.12

(주) 한우티엔씨가  
(주)에버다임으로  
새롭게 바뀝니다.

에버다임

서울 사무소 :  
서울 금천구 가산동 680 우림 라이온스밸리 II 1203호  
TEL : (02) 801-0750 FAX : (02) 801-0799

Sales & Marketing :  
Room #1203, Woolim Lion's Valley II  
680 Gasan-Dong, Geumcheon-Gu, Seoul, Korea  
TEL : +82-2-801-0750  
Fax : +82-2-801-0799

본사 및 공장 :  
충청북도 진천군 진천읍 장관리 332-3  
TEL : (043) 530-3490~7 FAX : (043) 530-3489

Factory & Head Office :  
332-3, Janggwari-ri, Jincheon-eub, Jincheon-gun,  
Chungcheongbuk-do, Korea  
TEL : +82-43-530-3490~7  
FAX : +82-43-530-3489