



KRÖLL 95 - 97



MODEL	K-70	K-160	K-180	K-220	K-260	K-260E	K-400D	K-550	K-80L	K-100	K-120L
SPECIFICATIONS											
Max. jib length (m)	45	60	60	60	60	70	70	70	40	45	40
Min. jib length (m)	12	31	31	31	31	31	35	35	28	28	28
Min. reach (m)	2.1	2.9	2.9	3.3	3.3	3.3	5.9	5.9	3.5	3.5	3.5
Load (t)	1.2	1.8	2.3	3.0	3.5	2.0	4.0	5.5	2.0	2.0	2.3
Reach (m)	45	60	60	60	60	70	70	70	40	45	40
Max. load (t)	5.0	10.0	10.0	12.0	12.0	12.0	20.0	20.0	8.0	8.0	8.0
Max. reach (m)	12.7	14.4	18.1	19.6	21.7	17.3	19.1	23.9	16.6	13.0	17.9
Height under hook (standard mast) (m)	41	55	67	59	65	65	92	92	34	40	34
Standard mast dim. (m x m)	12 x 12	22 x 22	22 x 22	22 x 22	22 x 22	22 x 22	32 x 32	32 x 32	1.6 x 1.6	1.6 x 1.6	1.6 x 1.6
Floor climbing equipment	CS12	CS16	CS16	CL22	CL22	CL22	CL22.2	CL22.2	CS16	CS16	CS16
Telescopic equipment	CT12	CT16	CT16	CT22	CT22	CT22	TS32	TS32	CT16	CT16	CT16
Standard rail gauge (m)	4.5	6	6	6	6	6	9	9	6	6	6
Standard wind speed (m/s)											
In service	20	20	20	20	20	20	20	20	20	20	20
Out of service	42	42	42	42	42	42	42	42	42	42	42

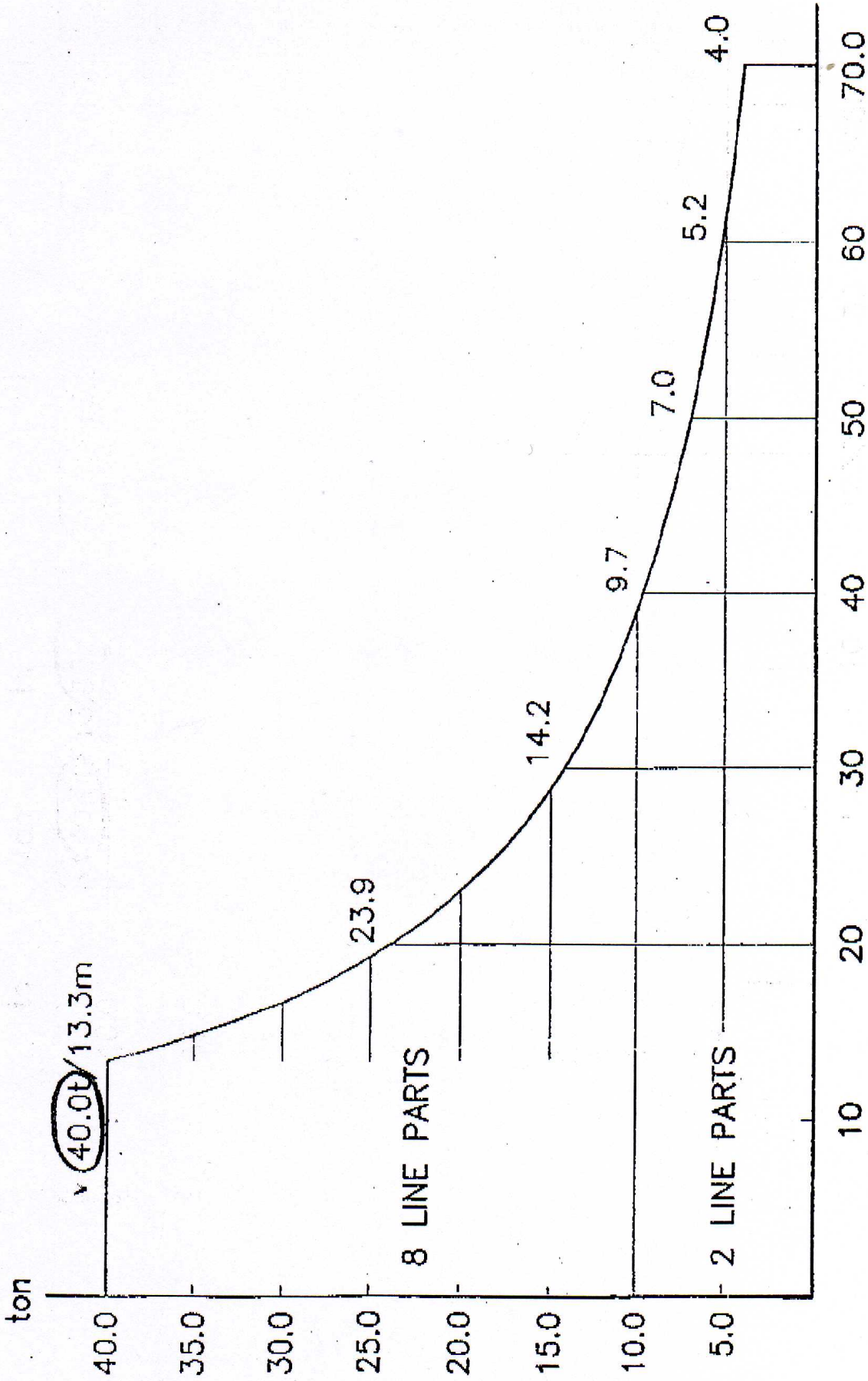
The table above denotes the main characteristics of the production series for 1995/1997.
It is for use as a guidance only, and can be adjusted to suit site requirements.

KRÖLL Technical Services will provide you with a more defined load, reach, height specification to allow for a maximum load reach coverage at a minimum cost.

In addition to the above, quotations can be given for tower cranes of all ton-meter capacities up to 25000 tm.

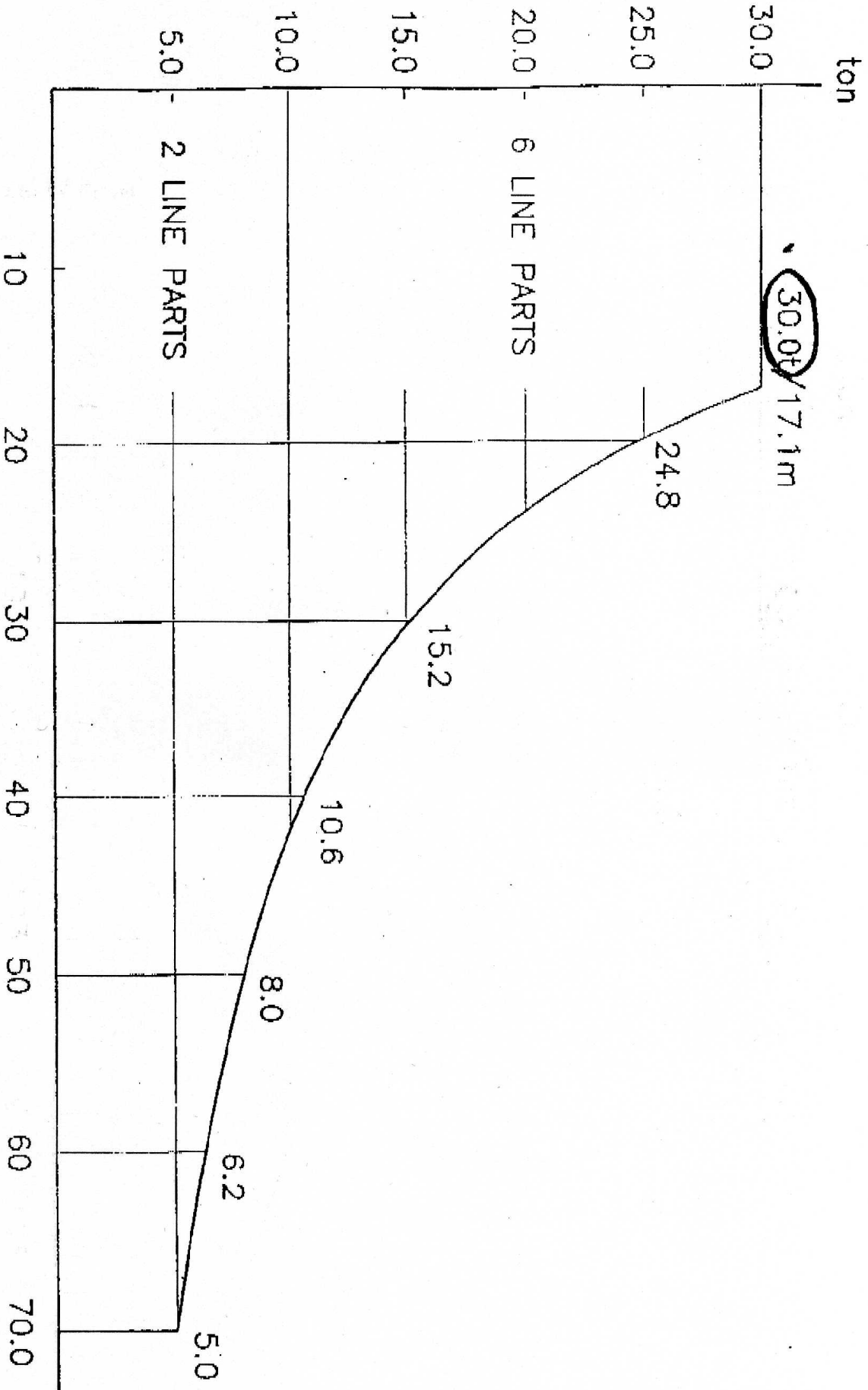
KRÖLL CRANES A/S

KRØLL CRANES A/S KRØLL LOAD DIAGRAM K-550



18-6-1996 JL K : 3.15 t X-units : 3.33 m/cm meter
 Xo: 2.06 m Y-units : 3.33 t/cm

KRØLL CRANES A/S - LOAD DIAGRAM K-550



18-6-1996 JL

K : 2.10 t

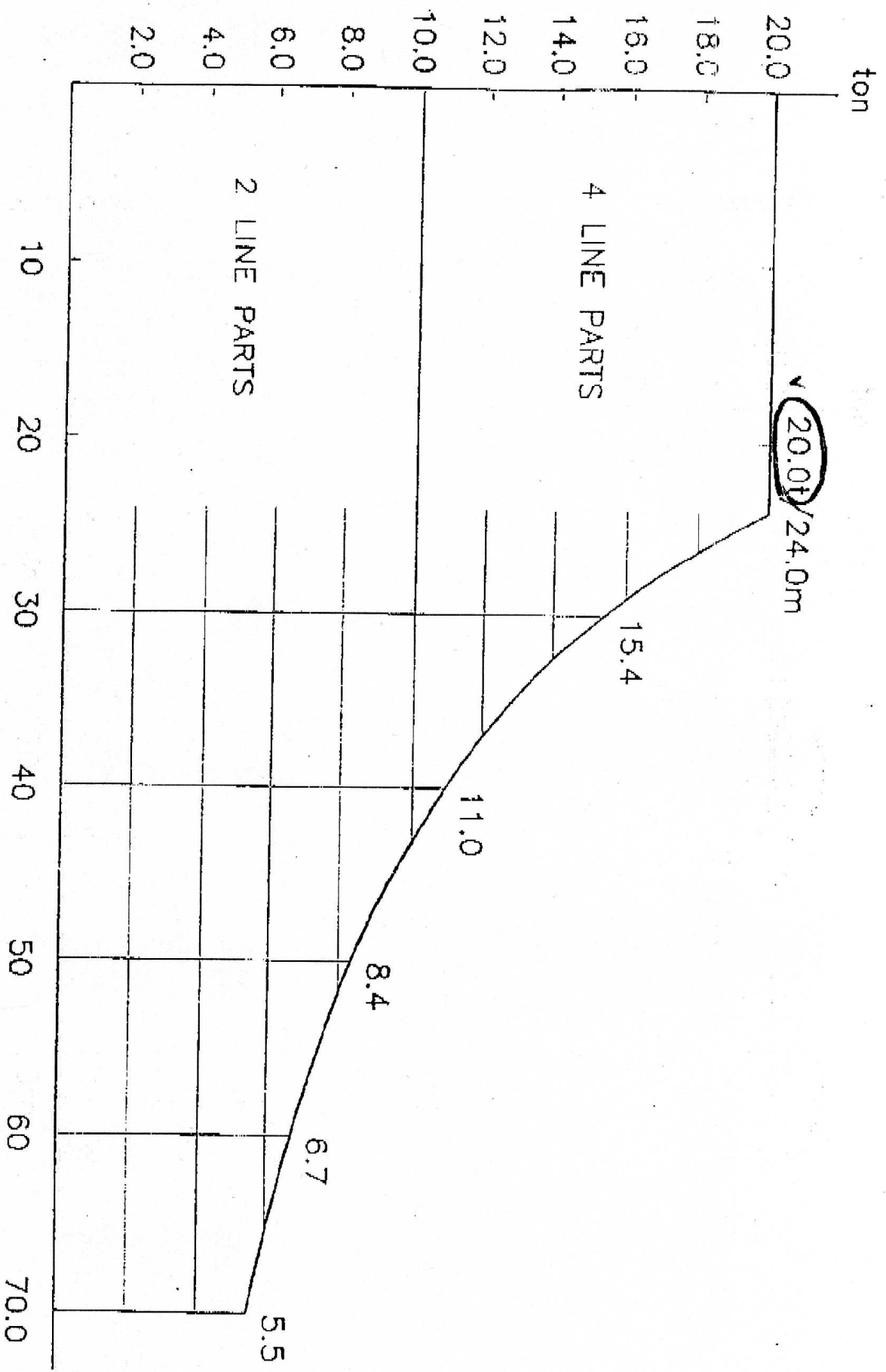
X-units : 3.33 m/cm

meter

Xo: 2.06 m

Y-units : 2.50 t/cm

KRØLL CRANES A/S KIEL - LOAD DIAGRAM K-550



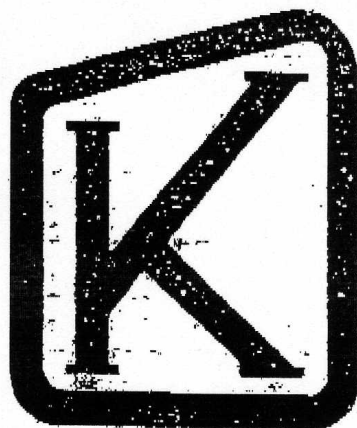
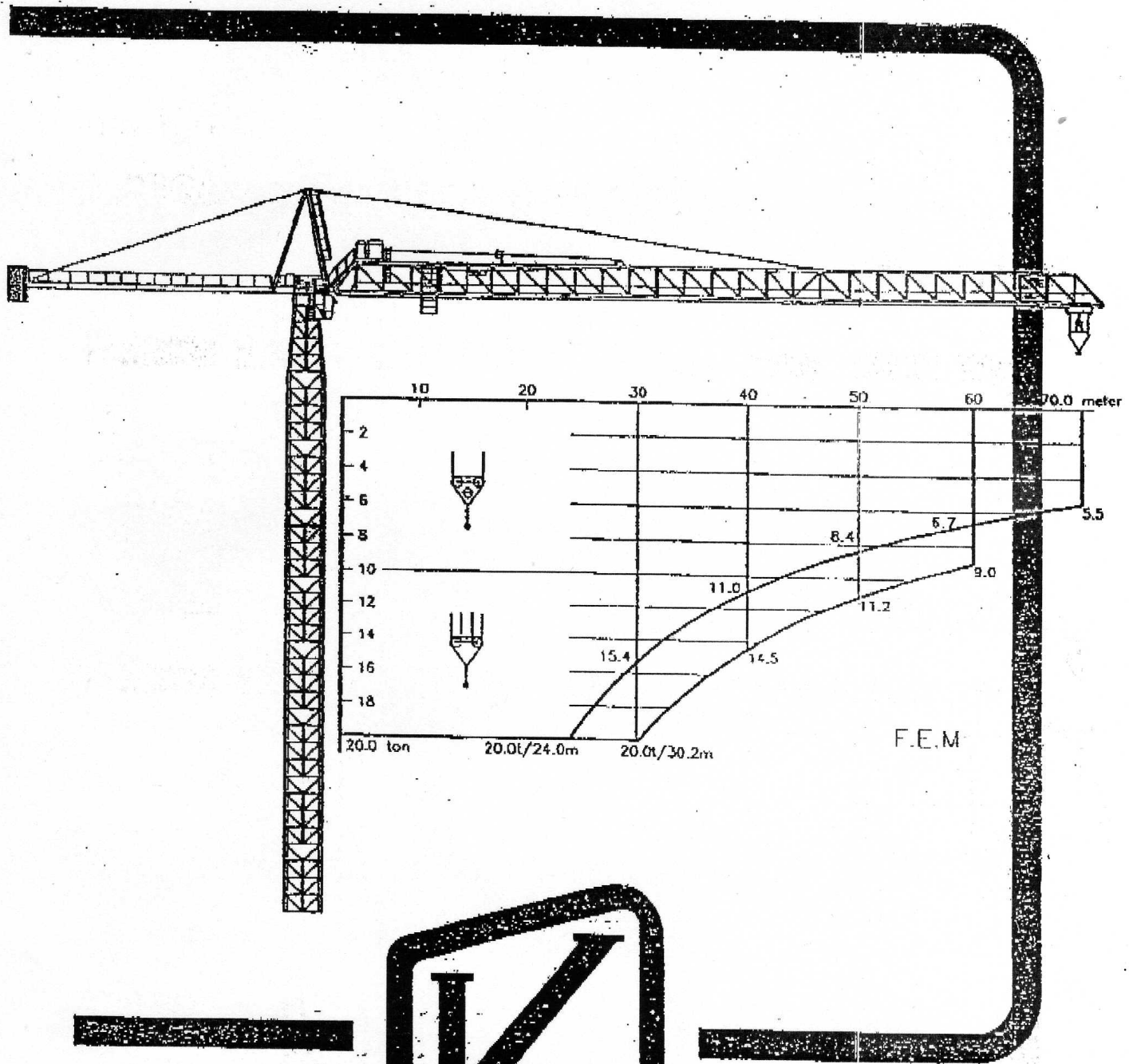
18-6-1996 JL K : 1.40 t

Xo: 2.06 m

X--units : 3.33 m/cm
Y--units : 1.67 t/cm
meter

TECHNICAL
DATA

K-550



손 옥 기
CEO

주식회사 니루건설 / 學履建設

580-806

전북 정읍시 인자동 259-63

전화 : (063)538-6118, 018 240-0155

FAX : (063)532-8566

Mail : okgson@hanmail.net