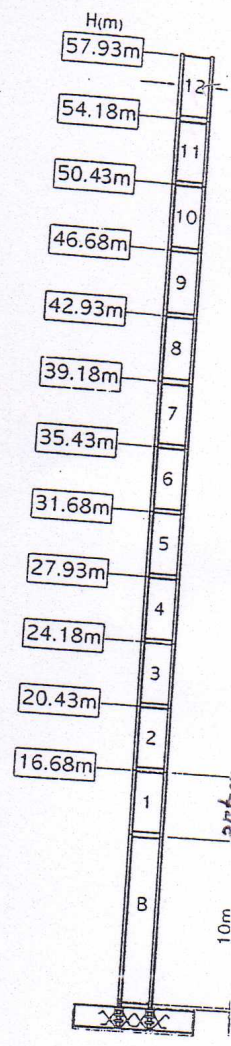
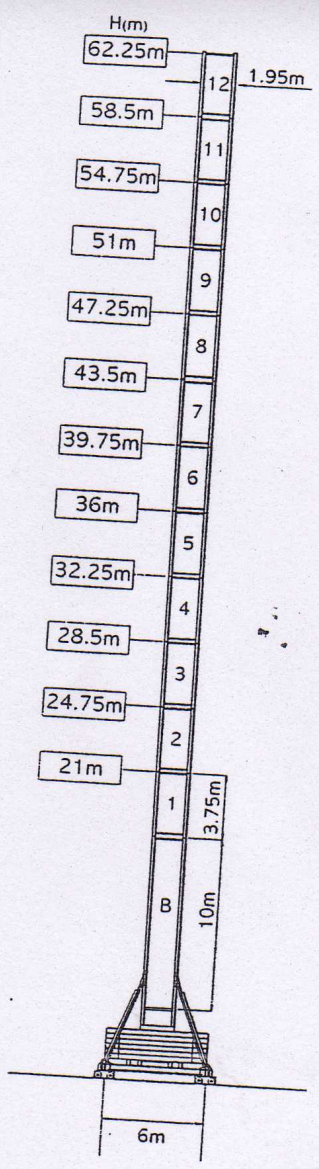
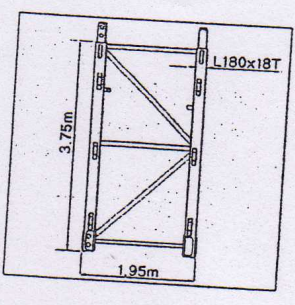


H2O MAST



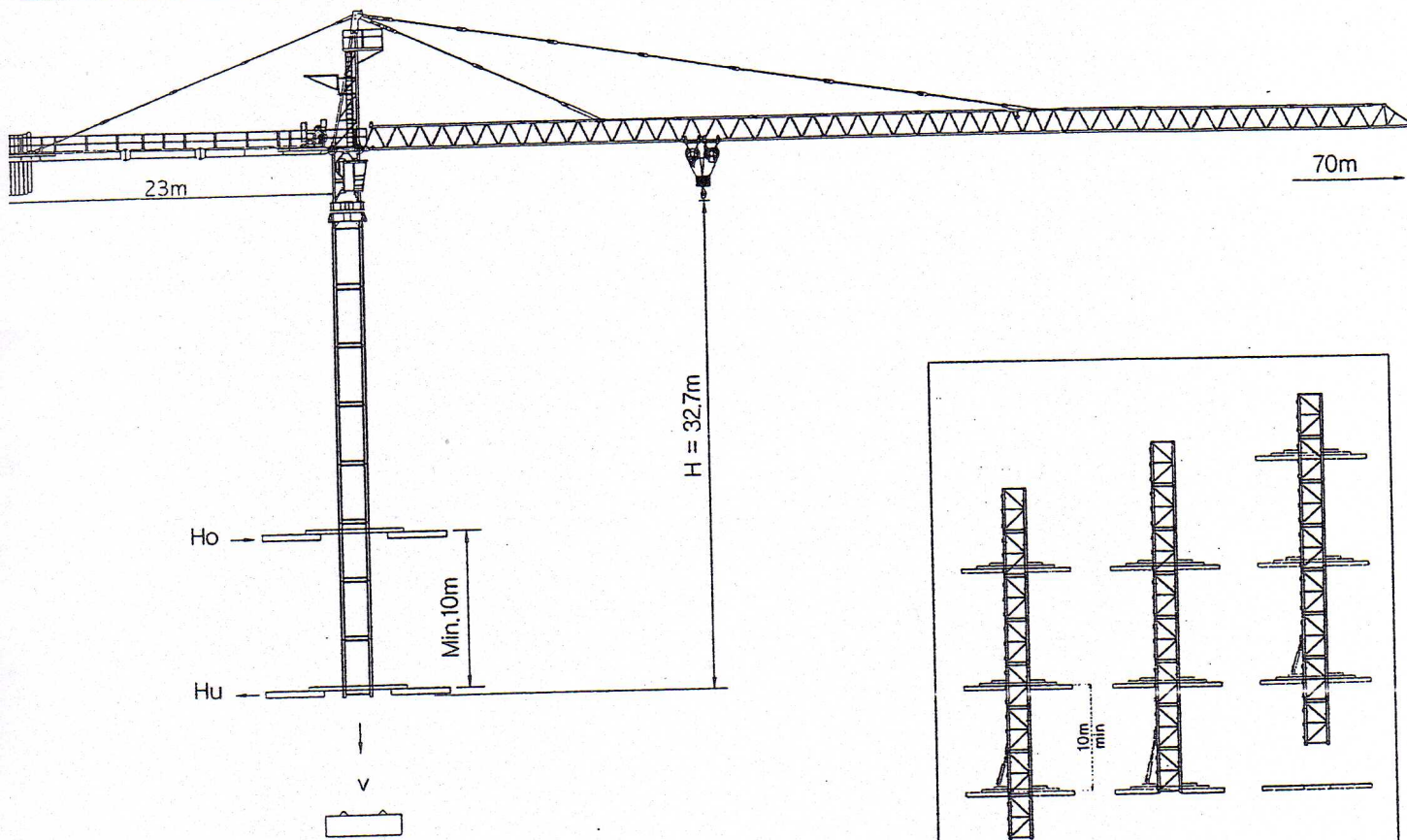
- 57.93m
- 70m
- 16t

KCT 7016C Radius and Capacity

		16.8	22	27	32.3	37.5	40	42.8	45	48	50	53	55	58	60	63	66	
8t	34.68 m (II)	8	8	8	8	7.33	6.81	6.31	5.96	5.53	5.27	4.92	4.71	4.41	4.24	3.99	3.81	
16t	17.43 m (IV)	16	12.31	9.71	7.83	6.50	5.98	5.48	5.12	4.69	4.44	4.08	3.87	3.58	3.40	3.16	3.00	
8t	35.85 m (II)	8	8	8	8	7.61	7.07	6.55	6.19	5.74	5.48	5.11	4.89	4.60	4.41	4.16	4.00	
16t	18.01 m (IV)	16	12.78	10.09	8.15	6.77	6.24	5.72	5.35	4.91	4.64	4.28	4.06	3.76	3.58	3.32	3.16	
8t	37.13 m (II)	8	8	8	8	7.91	7.36	6.82	6.44	5.98	5.70	5.33	5.10	4.79	4.6	4.36	4.20	
16t	18.65 m (IV)	16	13.30	10.51	8.50	7.08	6.53	5.99	5.61	5.15	4.87	4.50	4.27	3.96	3.77	3.53	3.37	
8t	41.00 m (II)	8	8	8	8	8	8	7.63	7.21	6.70	6.40	5.98	5.45	5.15	4.82	4.62	4.38	
16t	20.60 m (IV)	16	14.87	11.79	9.57	8.00	7.39	6.80	6.38	5.87	5.57	5.15	4.62	4.32	4.08	3.84	3.68	
8t	41.59 m (II)	8	8	8	8	8	8	7.75	7.32	6.81	6.50	6.07	5.54	5.24	4.90	4.66	4.42	
16t	20.90 m (IV)	16	15.11	11.99	9.73	8.14	7.52	6.92	6.49	5.98	5.67	5.24	4.71	4.41	4.17	3.93	3.77	
8t	42.48 m (II)	8	8	8	8	8	8	7.93	7.50	7.00	6.67	6.24	5.71	5.41	5.07	4.83	4.59	
16t	21.34 m (IV)	16	15.47	12.28	9.98	8.35	7.72	7.10	6.67	6.17	5.84	5.41	4.88	4.58	4.34	4.10	3.94	
8t	40.00 m (II)	8	8	8	8	8	8	8	8	8	8	8	8	8	8	8	8	8
16t	21.76 m (IV)	16	15.81	12.56	10.21	8.55	7.91	7.29	6.86	6.36	6.03	5.60	5.07	4.77	4.53	4.29	4.13	3.89

KCT 7016C TOWER CRANE

CLIMBING



H > H max Consult us

CLIMBING : H = 32.7m

45 AFC 80	114 * kVA	460 V - 60Hz
		2000 / 14 / CE

* Crane without travelling equipment

		m / min	t	kW	
	45 AFC 80 (VECTOR)	0 ⇄ 30	8	45	560m
		0 ⇄ 39	6		
		0 ⇄ 56	4		
		0 ⇄ 97	2		
		0 ⇄ 110	1.7		
		0 ⇄ 15	16		
		0 ⇄ 19.5	12		
		0 ⇄ 28	8		
		0 ⇄ 48.5	4		
		0 ⇄ 55	3.4		

TROLLEY		DVF37	0~64m. nin	7.5Kw
SLEWING		SSR 3365	0.73 r.p.m	3 x 65 Nm
TRAVELLING		TVF 2RG 4M9	0 ⇄ 50 m/min	4 x 9 kW

KC

KUMKANG COMEDIL TOWER CRANE

KCT 7016C

