

PACKING LIST

ITEM	QUANTITY	DESCRIPTION	LENGTH (M)	WIDTH (M)	HIGHT (M)	UNT WEIGH(KG)	TOTAL WEIGH(KG)
1	1	BASIC MAST	10	1.9	1.9		3520
2	10	MAST	3.75	1.9	1.9	1180	11800
3	1	TELESCOPIC CAGE	8.88	2.4862	2.4484		5460
4	1	SLEWING UNIT	0.967	1.402	1.402	???	3648
5	1	CABIN MAST	3.809	1.370	1.35		1278
6	1	CABIN	2.0	1.23	1.64		300
7	1	TOWER HEAD	6.340	1.4	1.36		1300
8	1	COUNTER-JIB(A)	4.060	1.34	0.55		830
9	1	COUNTER-JIB(B)	9.925	1.34	0.55		1800
10	1	JIB SECTION(1)	6.0	1.3	1.574		765.1
11	7	JIB SECTION(2~8)	6.0	1.3	1.574		4022.6
12	1	JIB END	2.0	1.3	1.457		204.5
13	1	TROLLEY	1.9	1.53	0.82		350
14	1	HOIST WINCH	1.81	1.545	1.35		1800

PACKING LIST

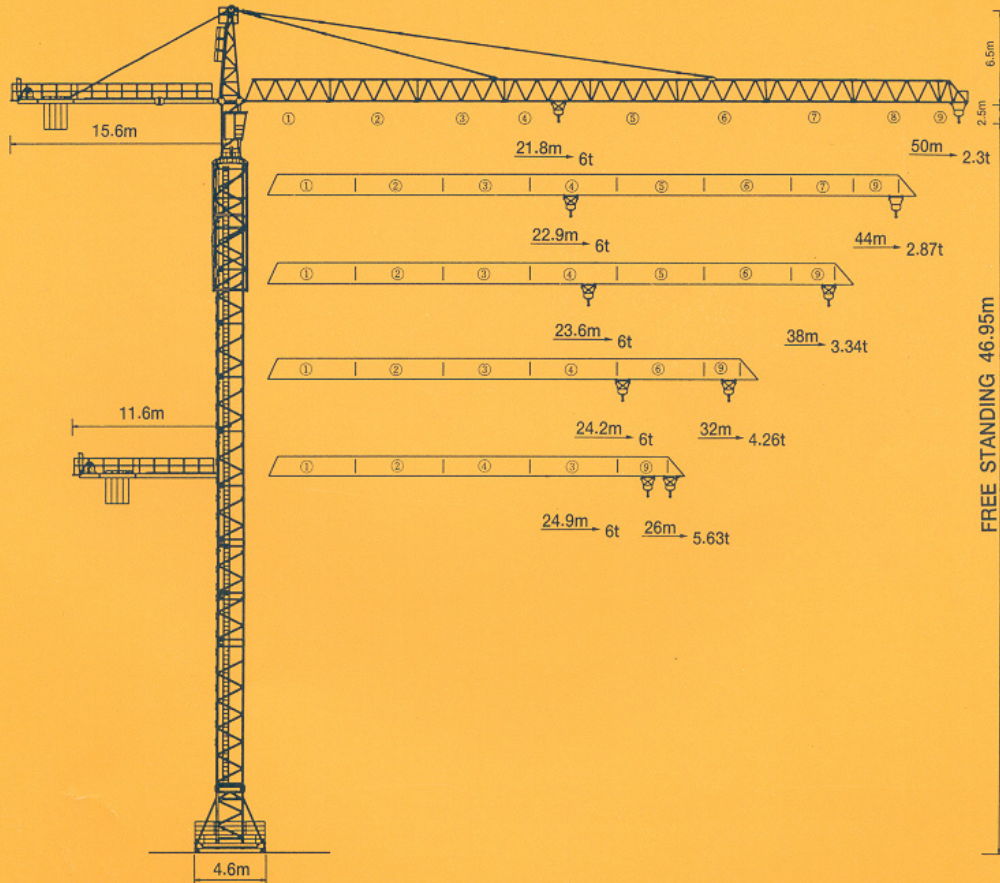
ITEM	QUANTITY	DESCRIPTION	LENGTH (M)	WIDTH (M)	HIGHT (M)	UNT WEIGH(KG)	TOTAL WEIGH(KG)
1	1	BASIC MAST	10	1.9	1.9		3520
2	10	MAST	3.75	1.9	1.9	1180	11800
3	1	TELESCOPIC CAGE	8.88	2.4862	2.4484		5460
4	1	SLEWING UNIT	0.967	1.402	1.402		3648
5	1	CABIN MAST	3.809	1.370	1.35		1278
6	1	CABIN	2.0	1.23	1.64		300
7	1	TOWER HEAD	6.340	1.4	1.36		1300
8	1	COUNTER-JIB(A)	4.060	1.34	0.55		830
9	1	COUNTER-JIB(B)	9.925	1.34	0.55		1800
10	1	JIB SECTION(1)	6.0	1.3	1.574		765.1
11	7	JIB SECTION(2~8)	6.0	1.3	1.574		4022.6
12	1	JIB END	2.0	1.3	1.457		204.5
13	1	TROLLEY	1.9	1.53	0.82		350
14	1	HOIST WINCH	1.81	1.545	1.35		1800

본 카탈로그의 제품사진은 실제와 다를 수 있습니다. (9/12)

본 카탈로그의 제품사진은 실제와 다를 수 있습니다. (9/12)



KUMKANG TOWER CRANE

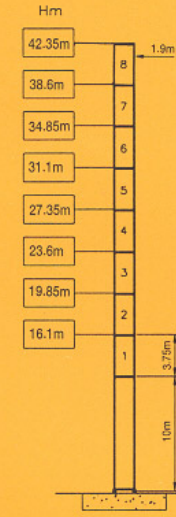
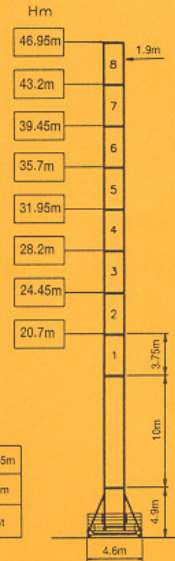
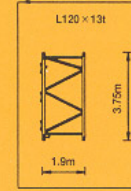


KTC506 GRUCOMEDIL

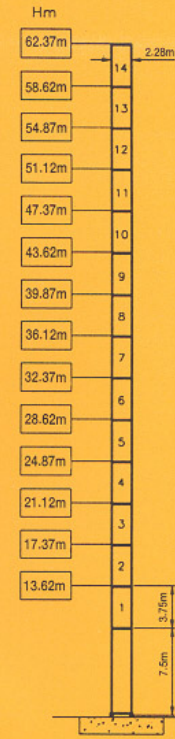
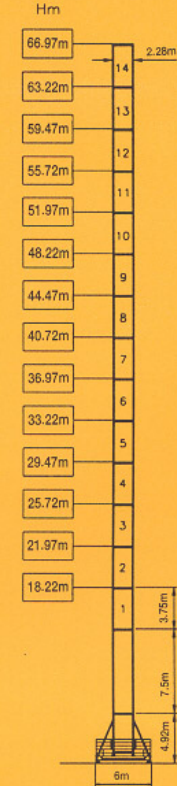
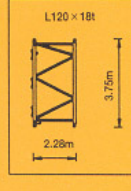
CASAGRANDE GROUP

KTC506

STANDARD E-MAST



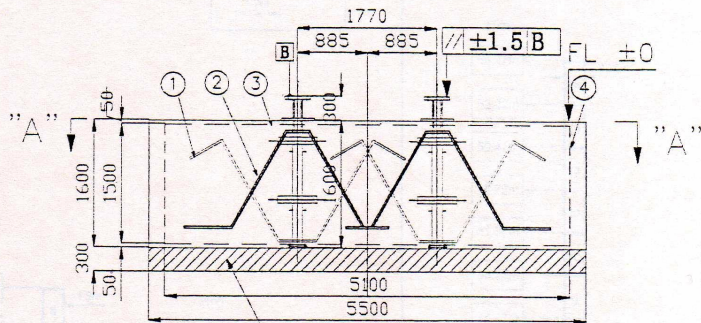
SPECIAL L-MAST



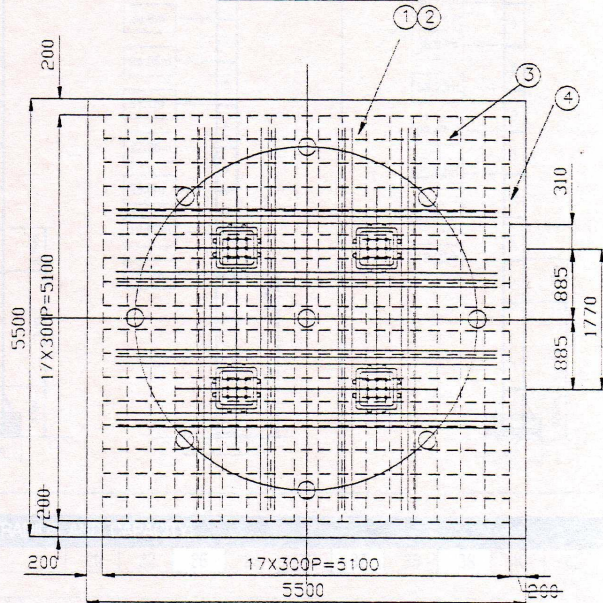
작업반경및 인양능력 (RADIUS AND CAPACITY)

	20	22	26	28	30	32	35	38	40	42	44	45	48	50	m
3 TON/40.3 M (II)	3	3	3	3	3	3	3	3	3	2.86	2.7	2.62	2.42	2.3	t
6 TON/21.8 M (IV)	6	5.93	4.91	4.50	4.15	3.85	3.45	3.12	2.93	2.76	2.6	2.52	2.32	2.2	
3 TON/42.42 M (II)	3	3	3	3	3	3	3	3	3	3	2.87				
6 TON/22.9 M (IV)	6	6	5.19	4.77	4.40	4.08	3.67	3.32	3.12	2.93	2.77				
3 TON/38 M (I)	3	3	3	3	3	3	3	3							
6 TON/23.6 M (IV)	6	6	5.35	4.90	4.50	4.16	3.71	3.34							
3 TON/32 M (I)	3	3	3	3	3	3									
6 TON/24.2 M (IV)	6	6	5.50	5.03	4.62	4.26									
3 TON/26 M (I)	3	3	3												
6 TON/24.9 M (IV)	6	6	5.63												

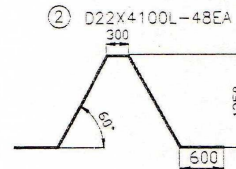
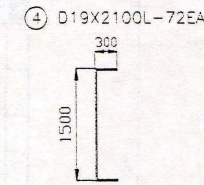
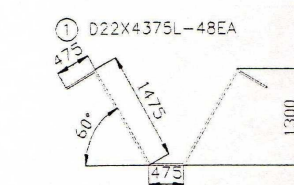
☒ = ☐ - 0.1 t



1차 버림콘크리트



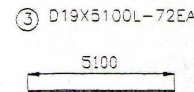
VIEW "A-A"



- * CONCRETE SPECIFIC WEIGHT : 2400kg/M³
- * SOIL PRESSURE : 20TON/M²
- * FOUNDATION WEIGHT : 116.2TON
- * 1차 버림콘크리트 두께는 반드시 300mm이상으로 타설하시오
- * CONCRETE GRADE : 240kg/cm²

ANCHOR 설치시 주의사항

1. 버림 콘크리트 타설후 ANCHOR를 가설치한 상태에서 BASIC MAST와 결합되는 4개소 PLATE의 레벨을 정확히 맞추고 콘크리트 타설이나 외부의 힘에 의해 움직이지 않도록 충분한 보강을 한 후, 레벨을 필히 재검사해야 한다.



NO	DESCRIPTION	SIZE	MAT'L	Q'TY	REMARK
1	REINFORCING BAR	D22X4375L	SD40	48	
2	REINFORCING BAR	D22X4100L	SD40	48	
3	REINFORCING BAR	D19X5100L	SD40	72	
4	REINFORCING BAR	D19X2100L	SD40	72	



SAN ENGINEERING CO.

PROJECT TITLE

KTC506
FOUNDATION PLAN

DESIGNED BY

DRWN BY

STRUCT BY

MECH.

ELECT.

CHECKED

APPROVED BY

NAME OF DRAWING

SCALE S 1/70

DATE 199 . . .

DRWG NO □-□□□

SHEET NO