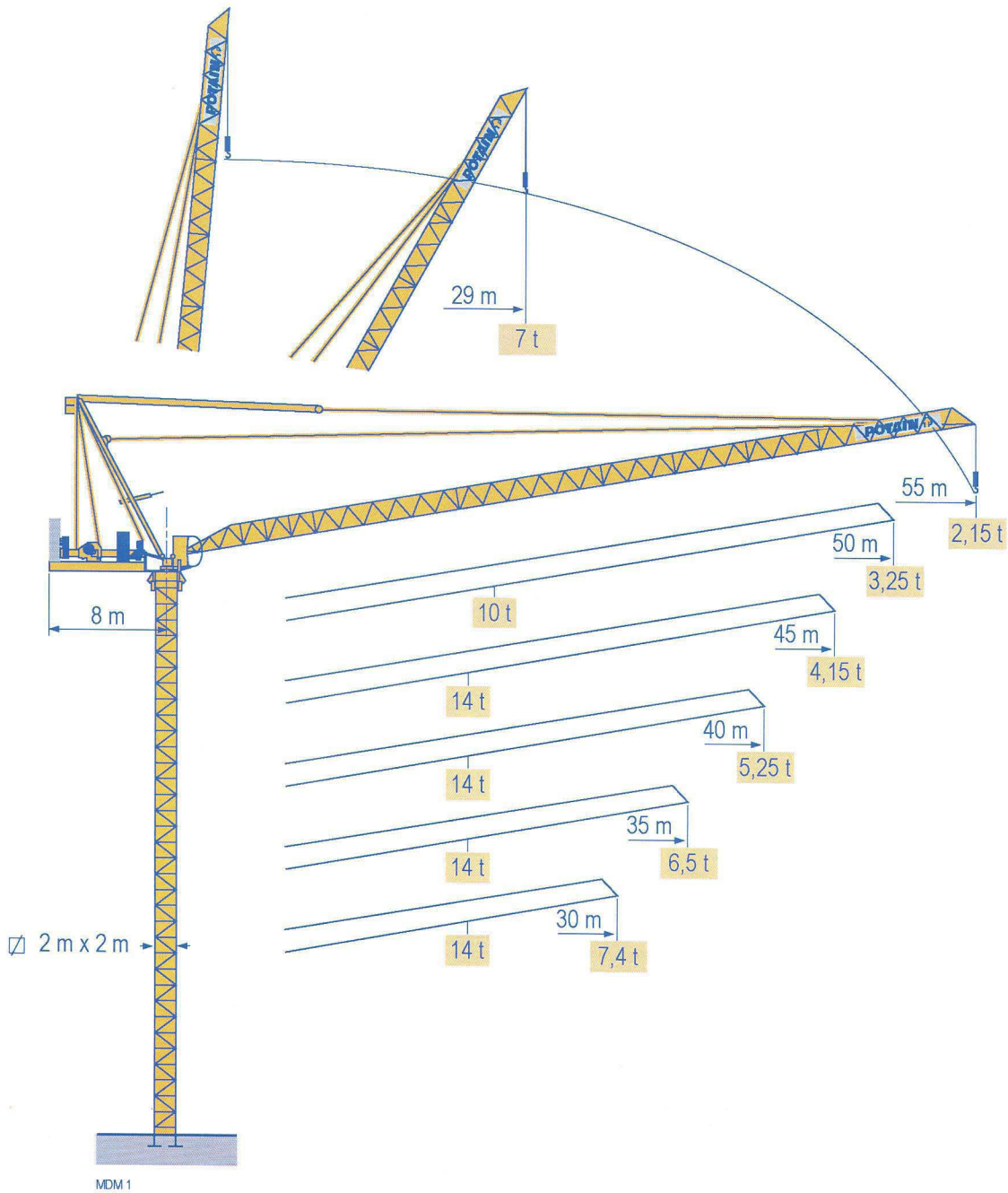


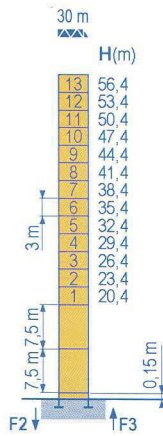
## MCR 225 A



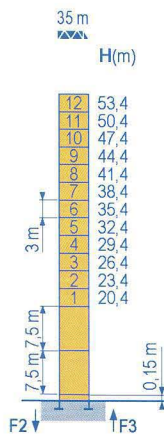
**Masts / Reactions**

MCM 2

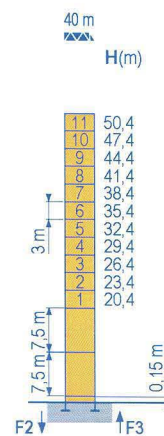
Telescopic 2 m



P 21 A	
F2	● 164 t
	■ 229 t
F3	● 124 t
	■ 190 t
▲	61 t



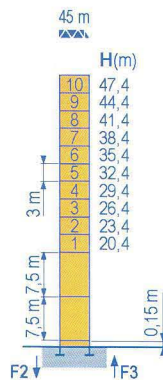
P 21 A	
F2	● 162 t
	■ 229 t
F3	● 122 t
	■ 191 t
▲	60 t



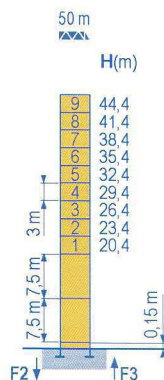
P 21 A	
F2	● 159 t
	■ 227 t
F3	● 120 t
	■ 189 t
▲	59 t



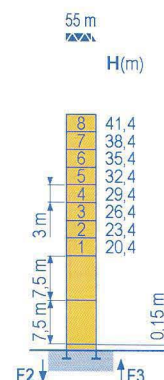
Telescopic 2 m



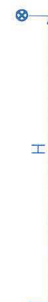
P 21 A	
F2	● 156 t
	■ 224 t
F3	● 117 t
	■ 187 t
▲	58 t



P 21 A	
F2	● 153 t
	■ 222 t
F3	● 115 t
	■ 186 t
▲	57 t



P 21 A	
F2	● 151 t
	■ 218 t
F3	● 114 t
	■ 182 t
▲	56 t



MCR 225 A

**POTAIN**

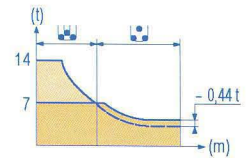
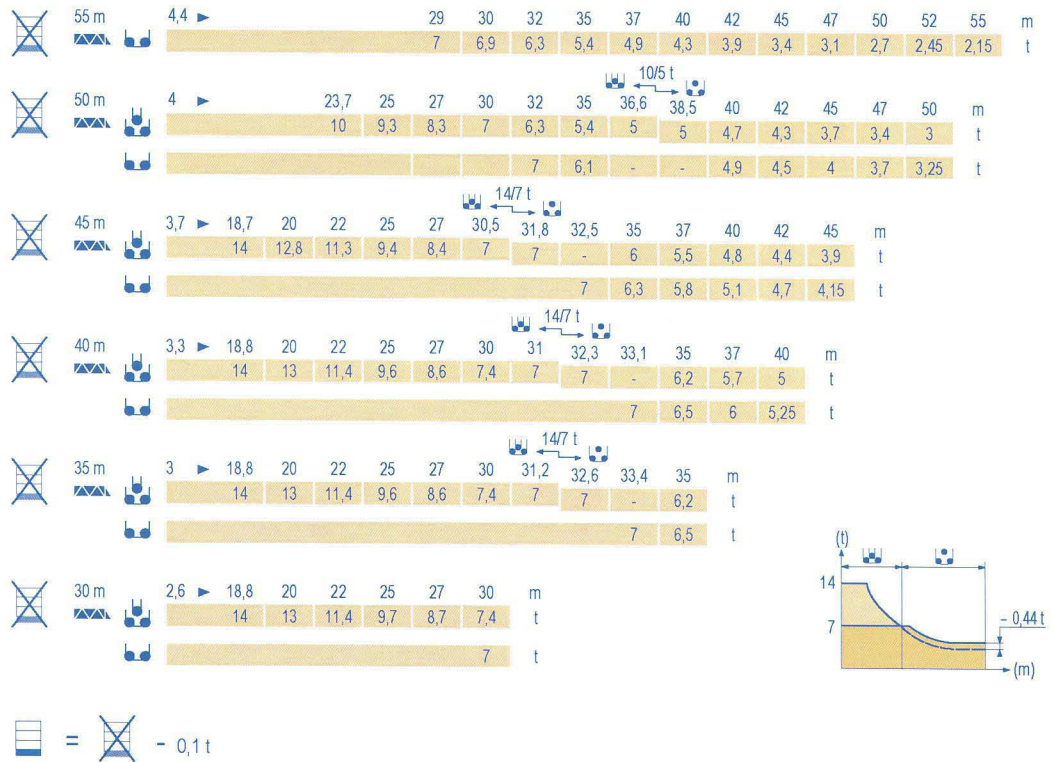
**GB**

- Reactions in service
- Reactions out of service
- ▲ Without load, ballast (or transport axles), with maximum jib and maximum height.



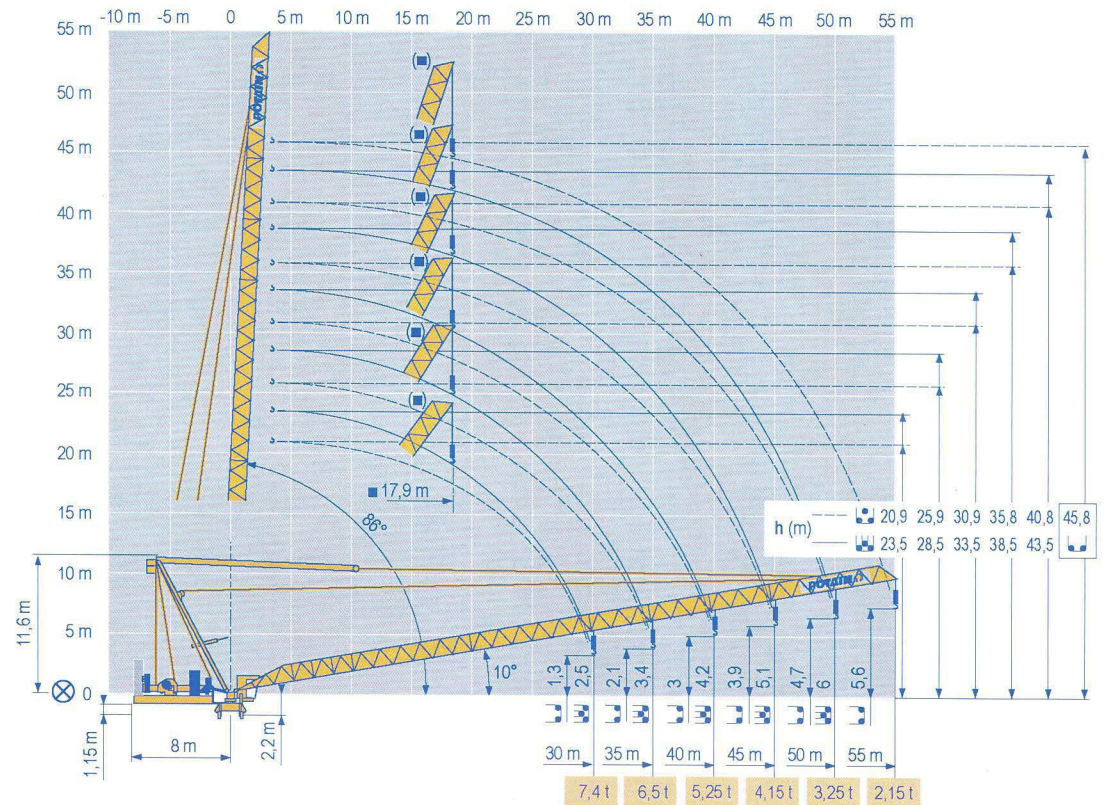
## Load diagrams

MDM1



## Luffing jib

MDM1



MCR 225 A

POTAIN



GB

Load diagrams without jib-end inspection platform



Load diagrams with jib-end inspection platform deduct 0,1 t



Jib hinge shaft



Weathervaning position



# Mechanisms

MDM 2

MCR 225 A - 50 Hz													hp	kW												
	75 LVF 35	m/min	0	→	40	→	46	→	81	→	96	0	→	20	→	23	→	41	→	48	75	55	766 m			
	Optima	t	7		6		3		2,25	14		12		6		4,5										
	100 LVF 35	m/min	0	→	52	→	62	→	108	→	140	0	→	26	→	31	→	54	→	70	100	75	1146 m			
	Optima	t	7		6		3		1,75	14		12		6		3,5										
150 LCC 35	m/min	0	→	84	→	100	→	124	→	166	→	200	0	→	42	→	50	→	62	→	83	→	100	150	110	1004 m
	t	7		5,25		3,5		1,75		0,875	14		10,5		7		3,5		1,75							
	75 V VF 30	m/min	2 min														75	55								
	RVF 162 Optima +	rpm	0 → 0,7														2 x 7,5	2 x 5,5								
CEI 38			400 V (+6% -10%)														<b>kVA</b>									
																	75 LVF : 165 kVA 100 LVF : 190 kVA 150 LCC : 240 kVA									

MCR 225 A - 60 Hz													hp	kW												
	75 LVF 35	m/min	0	→	40	→	46	→	81	→	96	0	→	20	→	23	→	41	→	48	75	55	766 m			
	Optima	t	7		6		3		2,25	14		12		6		4,5										
	100 LVF 35	m/min	0	→	52	→	62	→	108	→	140	0	→	26	→	31	→	54	→	70	100	75	1146 m			
	Optima	t	7		6		3		1,75	14		12		6		3,5										
150 LCC 35	m/min	0	→	84	→	100	→	124	→	166	→	200	0	→	42	→	50	→	62	→	83	→	100	150	110	1004 m
	t	7		5,25		3,5		1,75		0,875	14		10,5		7		3,5		1,75							
	75 V VF 30	m/min	2 min														75	55								
	RVF 162 Optima +	rpm	0 → 0,7														2 x 7,5	2 x 5,5								
CEI 38			480 V (+6% -10%)														<b>kVA</b>									
																	75 LVF : 165 kVA 100 LVF : 190 kVA 150 LCC : 270 kVA									

GB



Hoisting



Luffing



Slewing



This commercial document is not legally binding.  
For any technical information, please refer to the corresponding instructions.

**Manitowoc**  
Crane CARE

**Manitowoc**  
Crane Group



**Americas**

Tel : +1 888 479 7278  
Tel : +1 717 593 2000

**Europe - Middle East - Africa**

Tel : +33 (0) 4 72 81 50 00  
Tel : +44 (0) 191 522 2000

**Asia - Pacific**

Tel : +65 6264 1188  
Fax : +65 6862 4040

www.manitowoccrane.com

**Manitowoc Crane Group Asia Pte Ltd**

**Manitowoc Crane Group**

4 Kwong Min Road  
Singapore 628707

Tel: +65 6264 1188  
Fax: +65 6862 4040  
www.manitowoccrane.com

**MCR 225 A**

Réf. 2006 06 MDM 4

Copyright. Reproduction interdite © POTAIN 2006

Réalisation Sedoc