

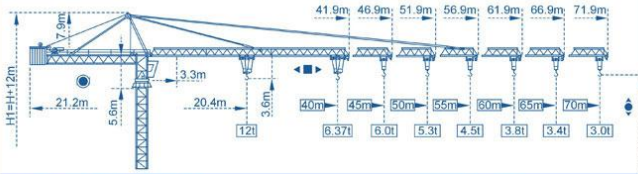
产品介绍 Products Introduction

SCM-C7030塔式起重机,是我公司自行设计上回转, 自升塔式起重机, 最大起重量12t. 各种机构采用本公司先进技术, 性能优越, 构造合理, 就位准确.
该机具有轨道行走式, 固定附着式, 内爬式三种使用类型.

SCM-C7030 tower crane is a kind of self-telescoping crane slewing from the top which is designed and manufactured by SCM. The maximum hoisting capacity is 12t. All the mechanisms of the C7030 adopted advanced technology with reasonable structures, superior performance and exact positioning.

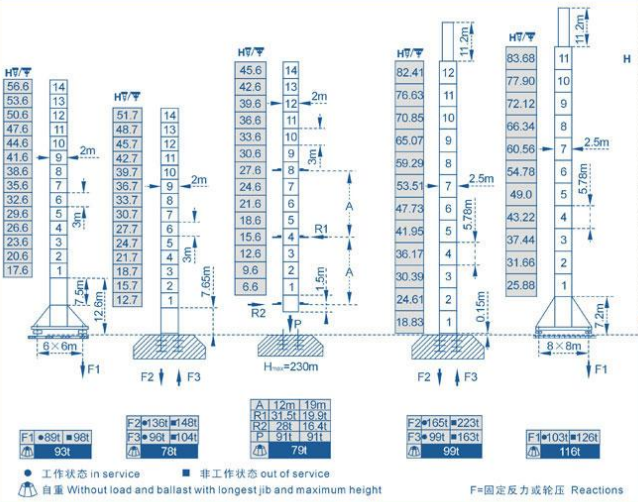
SCM-C7030 can be rail-travelling, stationary (or anchorage type) and inner-climbing type.

外形尺寸 Outline Dimensions

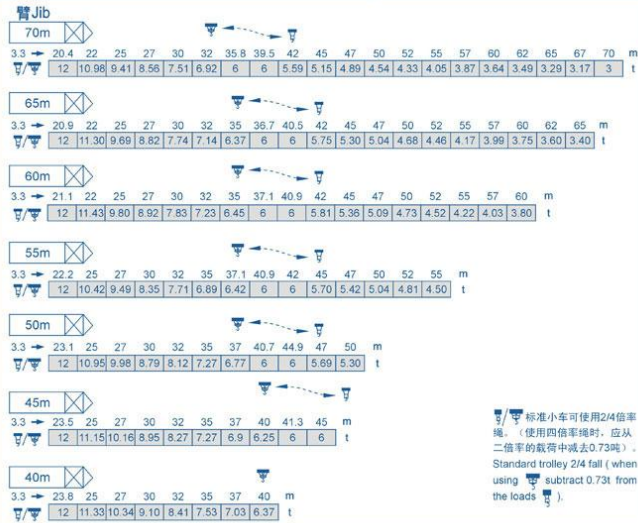


塔身截面 Mast 2x2m

2.5x2.5m



载荷特性 Load diagrams



机构特性 Specifications Mechanisms

名称 Name	机构代号 Model	工作速度 m/min Operating speeds	起重量 t Hoist weight	绕绳量 Rope length	电动机 kW Motor	
起升 Hoisting	70RCS30	双绳 2 fall	0-40	6	533m ★	51.5
			0-80	3		
		四绳 4 fall	0-20	12		
	75LVF30R	双绳 2 fall	0-43	6	570m ★	55
			0-86	3		
		四绳 4 fall	0-21.5	12		
	120LVF30	双绳 2 fall	0-65	6	900m ★	90
			0-130	3		
		四绳 4 fall	0-260	1.5		
0-32.5			12			
变幅 Trolleying	X145		10-20-40		堵转力矩 145N.m	
	7DCV		0-43		5.5	
	7DVF		0-44		5.5	
回转 Slewing	RCV185D		0-0.7 r/min		堵转力矩 3×185N.m	
	36RVF		0-0.7 r/min		堵转力矩 3×185N.m	
行走 Travelling	RT443		12.5-25		4×1.7/3.4	
	18TVF		0-25		4×3.4	

★ 根据用户特殊要求提供 To be supplied according to client's specific requirements