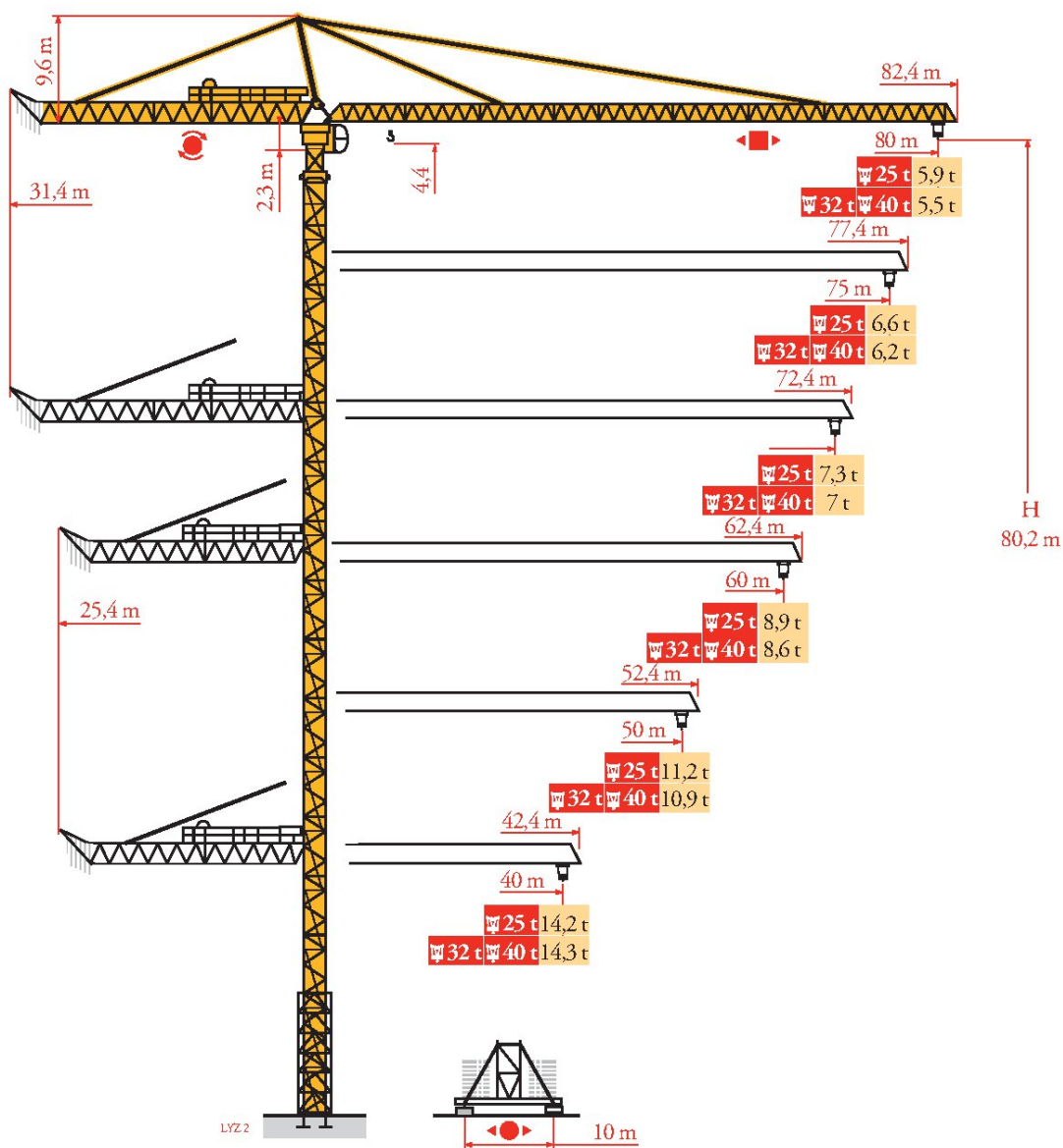
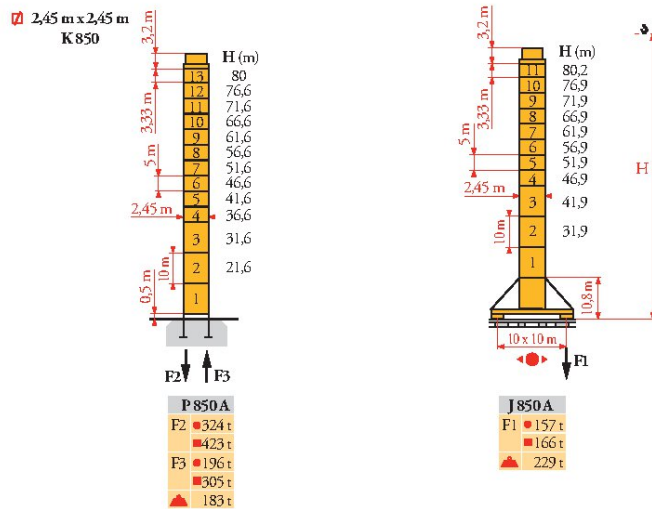


Potain MD 650



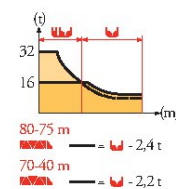
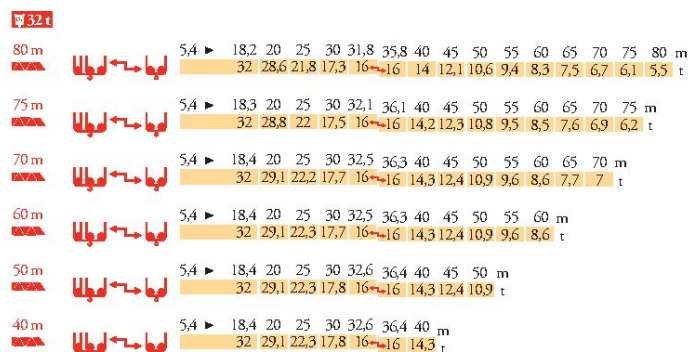
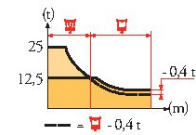
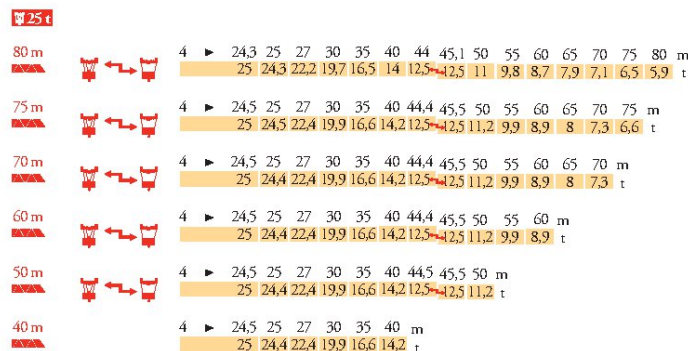
Mat / Réactions
 Maste / Eckdrücke
 Masts / Reactions
 Mástil / Reacciones
 Torre / Reazioni
 Tramo / Reacções
 Композиции башни /
 Реакции

LVZ₃



Courbes de charges
 Lastkurven
 Load diagrams
 Curvas de cargas
 Curve di carico
 Curva de cargas
 Диаграммы
 грузоподъемностей

LVZ₃



FR	DE	EN	ES	IT	PT	RU
● Réactions en service	Reaktionskräfte in Betrieb	Reactions in service	Reacciones en servicio	Reazioni in servizio	Reacções em serviço	Реакции при работе
■ Réactions hors service	Reaktionskräfte außer Betrieb	Reactions out of service	Reacciones fuera de servicio	Reazioni fuori servizio	Reacções fora de serviço	Реакции в покое
▲ A vide sans lest (ni train de transport) avec flèche et hauteur maximum	Ohne Last, Ballast (und Transportachse), mit Maximalausleger und Maximalhöhe	Without load, ballast (or transport axes), with maximum jib and maximum height	Sin carga, sin lastre, (ni tren de transporte), flecha y altura máxima	A vuoto, senza zavorra (ne assali di trasporto) con braccio massimo e altezza massima	Sem carga (nem trem de transporte)- sem lastro com lança e altura máximas	Вес без груза, балласта (или транспортных осей), с максимальной длиной стрелы и максимальной высотой

Courbes de charges

Lastkurven

Load diagrams

Curvas de cargas

Curve di carico

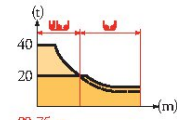
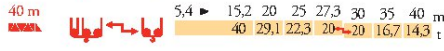
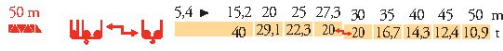
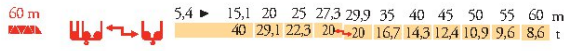
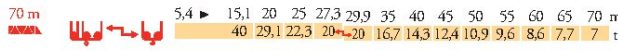
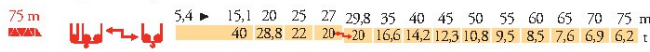
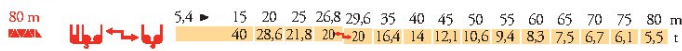
Curva de cargas

Диаграммы

грузоподъемностей

L23

40 t



80-75 m
 70-40 m
 - = -2,4 t
 - = -2,2 t

Lest de contre-flèche

Gegenauslegerballast

Counter-jib ballast

Lastre de contra flecha

Contrappeso

Lastros da contra lança

Балласт на консоли

L23

	5 900 kg - 4 200 kg - 2 800 kg		
	150 LCC	250 LCC	200 LBR
80 m	31,4 m	33 700 (kg)	33 700 (kg)
75 m	31,4 m	32 300 (kg)	32 300 (kg)
70 m	31,4 m	27 800 (kg)	27 800 (kg)
60 m	25,4 m	33 700 (kg)	33 700 (kg)
50 m	25,4 m	27 800 (kg)	27 800 (kg)
40 m	25,4 m	21 900 (kg)	21 900 (kg)

Lest de base - Grundballast

Base ballast - Lastre de base

Zavorra di base - Lastros da base

Базовый балласт

L23

2,45 m	J 850 A	H (m)	80,2	76,9	71,9	66,9	61,9	56,9	51,9	46,9	41,9	36,9	31,9
		(t)	60	60	60	60	60	60	60	60	60	60	60

FR
 Nous consulter

DE
 Auf Anfrage

EN
 Consult us

ES
 Consultarnos

IT
 Consultateci

PT
 Consultar-nos

RU
 Проконсультируйтесь у нас

Mécanismes
Antriebe
Mechanisms
Mecanismos
Meccanismi
Mecanismos
Механизмы

LYZ 6

		🏗️					🏗️					ch - PS hp	kW	🇷🇺		
⬆️	150 LCC 63	🏗️ 25 t	m/min t	46 12,5	56 9,4	70 6,25	92 3,1	110 1,6	23 25	28 18,8	35 12,5	46 6,2	55 3,2	150	110	461 m
	250 LCC 80	🏗️ 32 t	m/min t	52 16	68 12	86 8	108 4	122 2	26 32	34 24	43 16	54 8	61 4	250	180	619 m
	250 LCC 100	🏗️ 40 t	m/min t	46 20	60 15	76 10	96 5	108 2,5	23 40	30 30	38 20	48 10	54 5	250	180	488 m
⬅️	15 DVF 16	🏗️ 25 t	m/min	0 → 47 (25 t) - 0 → 63 (12,5 t) - 0 → 76 (6,25 t) - 0 → 100 (3,13 t)								15	11			
		🏗️ 32 t	m/min	0 → 33 (32 t) - 0 → 50 (16 t) - 0 → 67 (8 t) - 0 → 100 (2 t)												
		🏗️ 40 t	m/min	0 → 33 (40 t) - 0 → 50 (20 t) - 0 → 67 (10 t) - 0 → 100 (2,5 t)												
⬆️	200 LBR 100	🏗️ 40 t	m/min t	3,6/36 20	5,6/56 12,3	9/90 7,2	14,4/144 4	1,8/18 40	2,8/28 24,4	4,5/45 14,3	7,2/72 8	200	150	650 m		
	15 DVF 16	🏗️ 40 t	m/min	0 → 50 (20 t) 0 → 67 (7,5 t) 0 → 100 (2,5 t)			0 → 33 (40 t) 0 → 67 (8,2 t) 0 → 100 (2,5 t)			15	11					
🌀	RVF 192 Optima+		tr/min U/min rpm	0 → 0,6								2 x 15	2 x 11			
🏗️	J 850 A		m/min	i												
CEI 38				IEC 38				kVA								
400 V (+6% -10%) 50 Hz								150 LCC: 190 kVA 250 LCC: 350 kVA 200 LBR: 240 kVA								



FR

Levage
Distribution
Orientation
Translation

DE

Heben
Katzfahren
Schwenken
Kranfahren

EN

Hoisting
Trolleying
Slewing
Travelling

ES

Elevación
Distribución
Orientación
Traslación

IT

Sollevarmento
Distribuzione
Rotazione
Traslazione

PT

Elevação
Distribuição
Rotação
Translação

RU

Подъем
Перемещение каретки
Поворот
Перемещение крана



Document commercial non contractuel. Pour toute information technique se référer à la notice correspondante.

Unverbindliches Vertriebsdokument. Für technische Informationen, siehe die entsprechenden Anweisungen.

This commercial document is not legally binding. For any technical information, please refer to the corresponding instructions.

Documento commercial no contractual. Para cualquier información técnica, ver la noticia correspondiente.

Documento commerciale non vincolante, per tutte le informazioni tecniche fare riferimento al catalogo istruzioni.

Documento comercial não contractual. Para qualquer informação técnica complementar consultar as respectivas instruções.

Этот коммерческий документ не является юридически обязательным. Для получения технической информации, см. соответствующие инструкции.



MD 650



Manitowoc - Americas - World Headquarters

2400 S. 44th Street • Manitowoc • WI 54220 USA
Tel: +1 920 684 4410 • Fax: +1 920 652 9778

Manitowoc - Europe, Middle East & Africa

Manitowoc France SAS
18, rue de Charbonnières B. P. 173 • 69132 ECULLY Cedex • FRANCE
Tel: +33 (0)4 72 18 20 20 • Fax: +33 (0)4 72 18 20 00

Manitowoc - Asia Pacific

16F Xu Hui Yuan Building,
1089 Zhongshan No. 2 Road (S) • Shanghai 200030 China
Tel: +86 21 6457 0066 • Fax: +86 21 6457 4955

REF.: 2003 48 LYZ 6