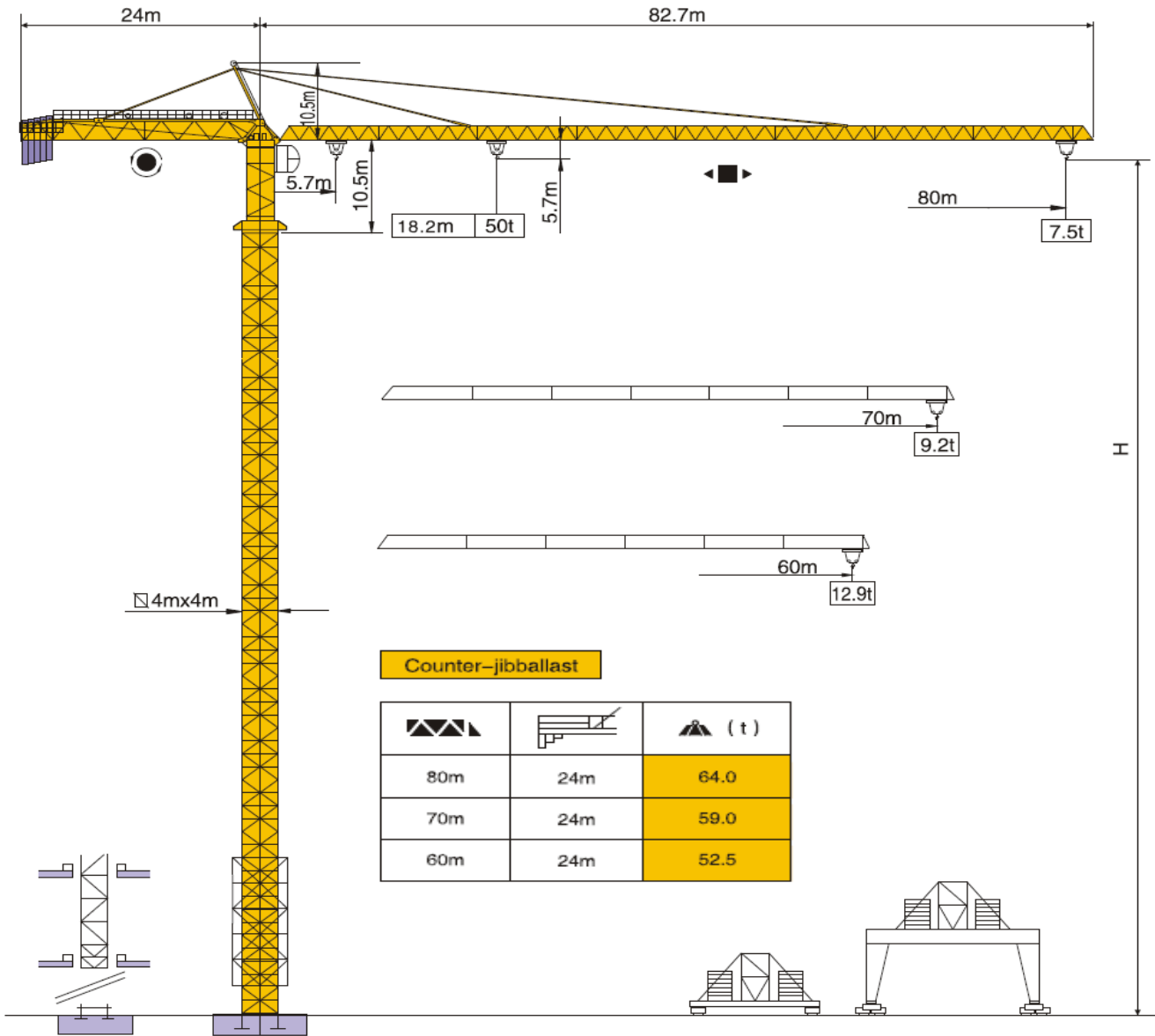
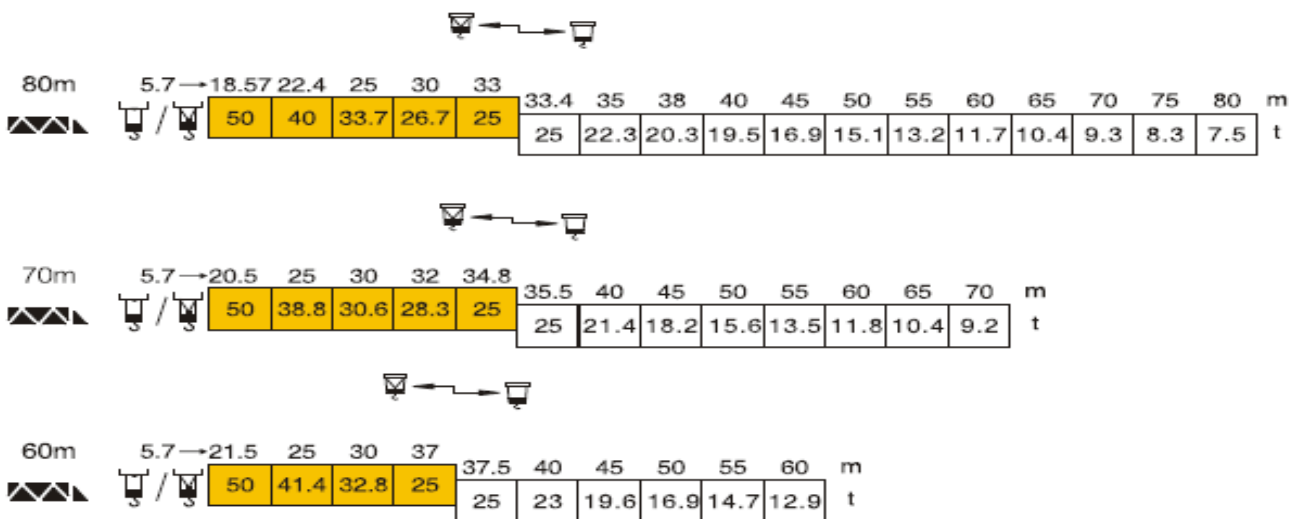


YM-4080(5080)

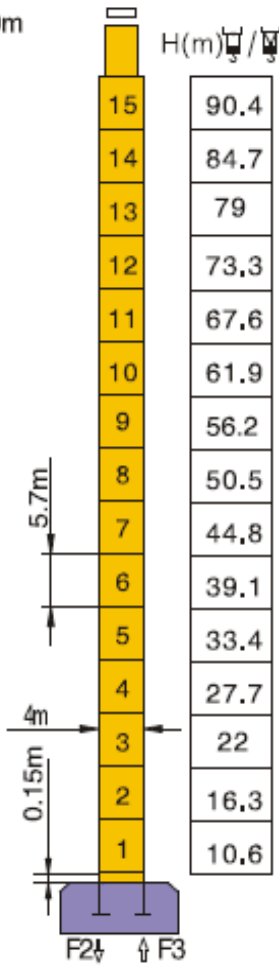


Load diagrams

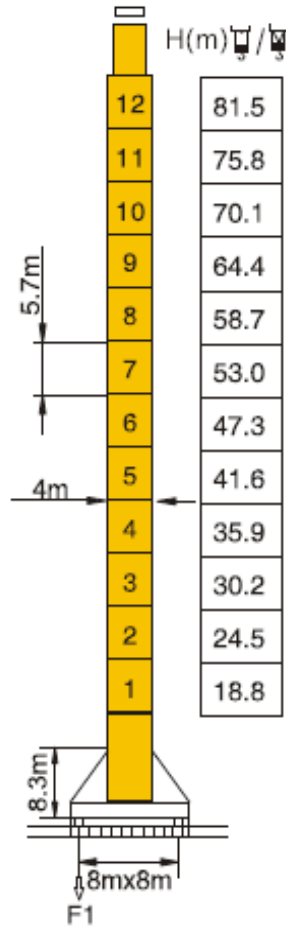


Mast 4mx4m

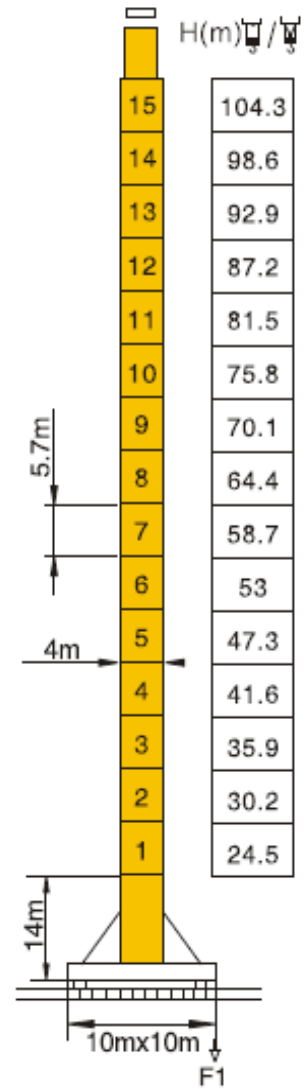
80m



F2	• 307t	■ 384t
F3	• 108t	■ 166t
⊕	296t	



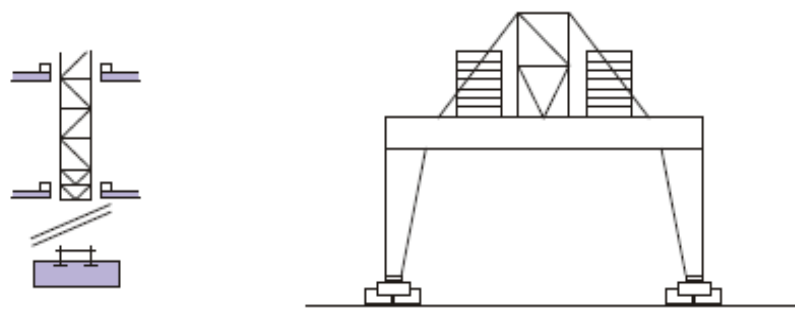
F1	• 236t	■ 270t
⊕	342t	











F1	• 257t	■ 273t
⊕	373t	

F Reactions	<ul style="list-style-type: none"> • In service ■ Out of service 	⊕ Self-load	Without load and counter-weight with longest jib and standard height.
-------------	--	-------------	---

Mounting possibilities



Mechanisms specification										kW		
Hoisting		132LVF	m/min	0-58	0-40	0-20	0-29	0-20	0-10	600	132	
			t	6.25	12.5	25	12.5	25	50			
Trolleying		18.5TVF	m/min	0-35						18.5		
Slewing		155SVT	r/min	0-0.45						155Nm x 4		
 Power Supply						380v 50Hz / 440v 60Hz						
 Necessary Electric Power						132LVF:250KVA						

* 40톤과 50톤 장비 구조물은 같고 호이스트 와이어로프의 줄수에 따라서 인양능력이 달라짐

* 40톤 장비는 호이스트 로프가 4줄이며, 50톤 장비는 호이스트 로프가 6줄임.

* 고객의 요구에 따라서 원치와 전기배전반 사양 변경이 가능함.