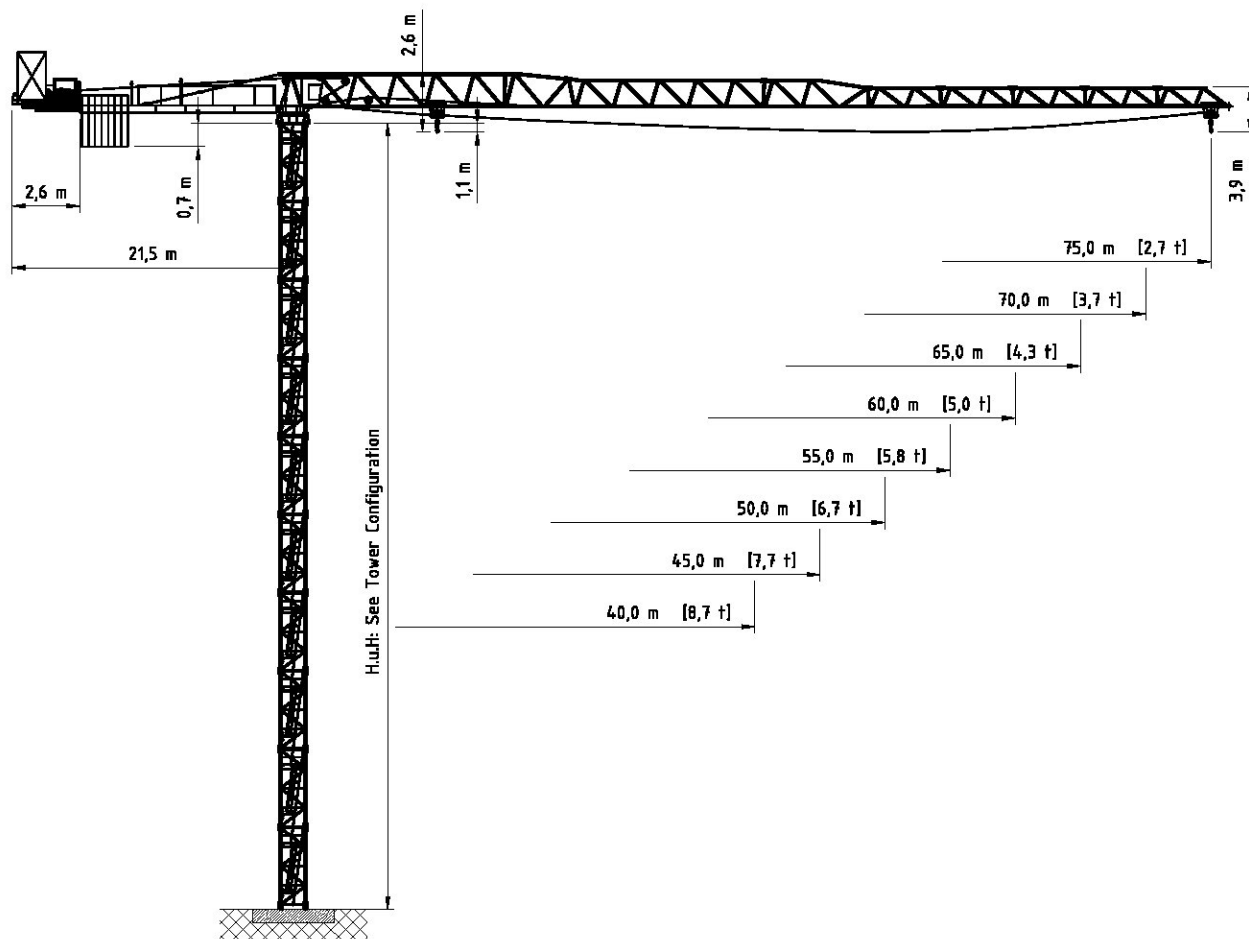


# FLAT-TOP CRANE

Flat-Top-Kran / Grues Flat-Top  
Подъемные краны без оголовка башни

# BK 330-16

2/4 - Fall



Subject to modification without prior notice  
Edition May. 2008

CE

TÜV - Certificate

F.E.M. 1.001-1987  
DIN 15018 H1 - B3

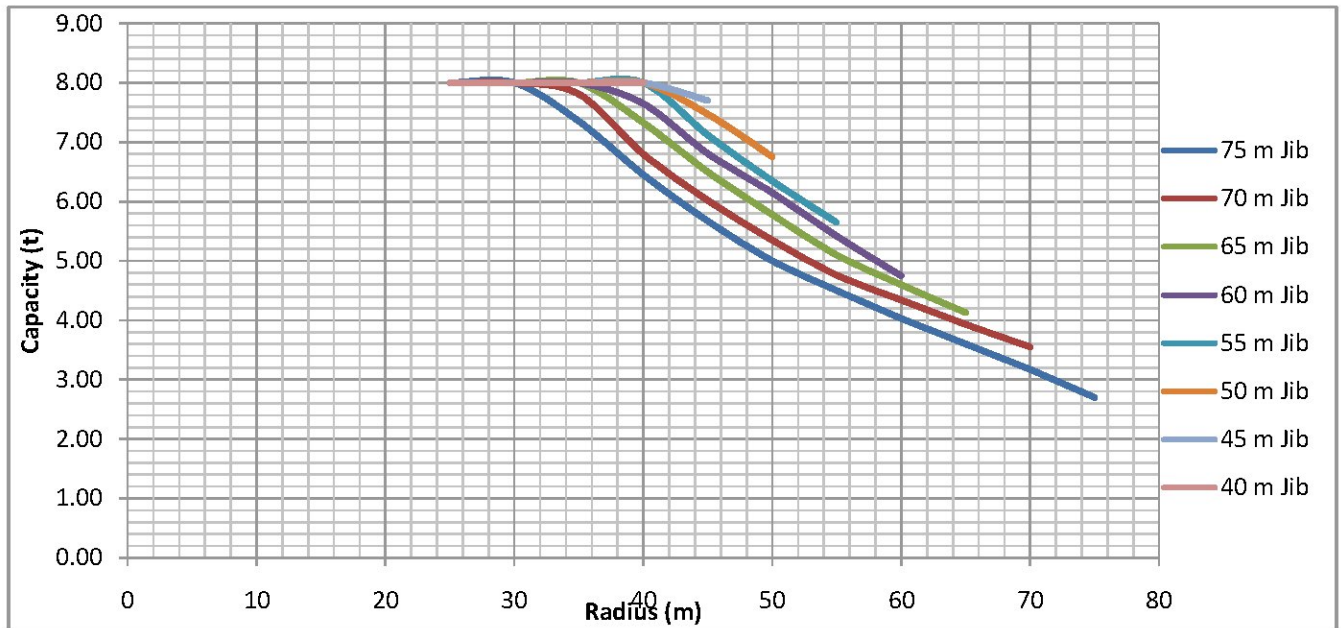
# BK 330-16

2/4 - Fall

## | Radius and Capacity

### 2-Fall

Jib	Max. Capacity	[m] x [t]										
		25	30	35	40	45	50	55	60	65	70	75
75 m Jib	8.0 t (33.0 m)	8.00	8.00	7.35	6.45	5.67	5.00	4.50	4.03	3.60	3.17	2.70
70 m Jib	8.0 t (34.8 m)	8.00	8.00	7.81	6.80	6.02	5.35	4.76	4.34	3.93	3.55	
65 m Jib	8.0 t (36.5 m)	8.00	8.00	8.00	7.33	6.50	5.78	5.10	4.60	4.13		
60 m Jib	8.0 t (39.1 m)	8.00	8.00	8.00	7.65	6.81	6.15	5.42	4.75			
55 m Jib	8.0 t (40.8 m)	8.00	8.00	8.00	8.00	7.12	6.35	5.65				
50 m Jib	8.0 t (41.2 m)	8.00	8.00	8.00	8.00	7.47	6.75					
45 m Jib	8.0 t (42.0 m)	8.00	8.00	8.00	8.00	7.70						
40 m Jib	8.0 t (40.0 m)	8.00	8.00	8.00	8.00							



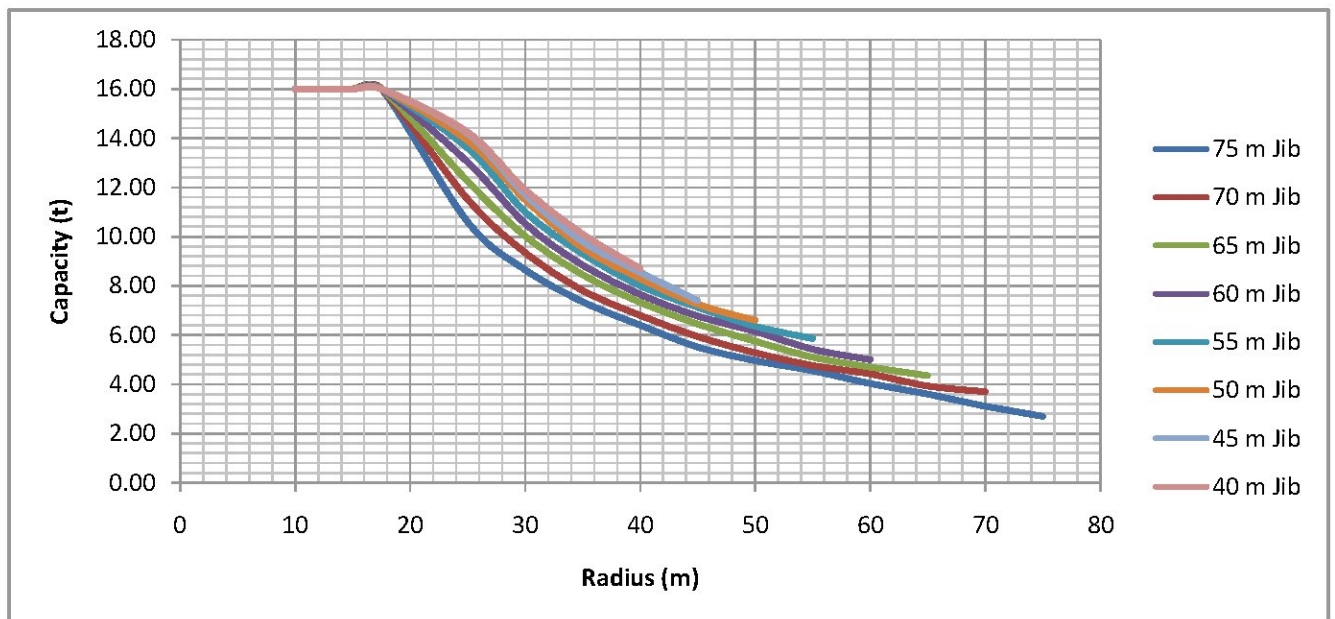
# BK 330-16

2/4 - Fall

## | Radius and Capacity

### 4-Fall

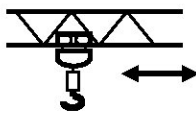

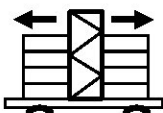
Jib	Max. Capacity	[m] x [t]										
		25	30	35	40	45	50	55	60	65	70	75
75 m Jib	16.0 t (18.5 m)	10.6	8.65	7.35	6.40	5.51	4.96	4.55	4.03	3.60	3.11	2.70
70 m Jib	16.0 t (19.4 m)	11.5	9.35	7.81	6.80	5.94	5.28	4.76	4.42	3.93	3.70	
65 m Jib	16.0 t (20.4 m)	12.2	10.0	8.45	7.33	6.45	5.75	5.10	4.70	4.35		
60 m Jib	16.0 t (21.5 m)	13.0	10.5	8.84	7.65	6.77	6.15	5.42	5.00			
55 m Jib	16.0 t (22.8 m)	13.6	11.0	9.30	8.00	7.12	6.35	5.85				
50 m Jib	16.0 t (23.7 m)	13.9	11.5	9.55	8.30	7.25	6.60					
45 m Jib	16.0 t (24.2 m)	14.1	11.7	9.80	8.55	7.40						
40 m Jib	16.0 t (24.7 m)	14.2	11.9	10.1	8.70							



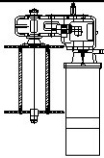
# BK 330-16

2/4 - Fall

## |Speed

Speed	480 V			
	60 Hz			
	Motor	6.0 kW	3 x 5.2 kW	2 x 9.0 kW
	Speed	9.5 - 44.0 - 90.0 m/min	0.73 rpm	30.0 m/min

## |Power

Hoist Unit		79.0 (130.0 kW / 162.3 kVA)
------------	--	-----------------------------

## |Counterweight

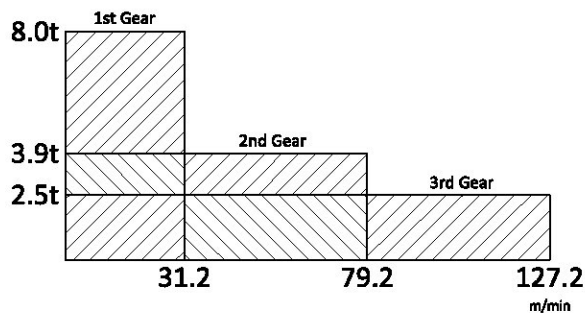
All Lengths	16.0 t
-------------	--------

### |Hoist Unit (79.0 S5.0 L960)

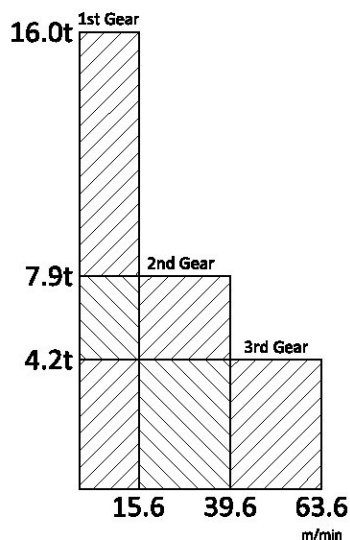
79.0 kW AC Slipring motor with 3-step gearbox (remote control) eddy current brake for precision hoisting with reduction of 1:10.

Equipment: double shoe brake with automatic adjustment and brake lining wear and tear control, control cabinet – contactor controlled, (PLC control by request) separate resistor cabinet, hoist limit switch grooved drum for hoist rope  $\varnothing 14$  mm diameter, on erection frame ready for operation.

#### 2 - Fall / max. Hook height 480.0 m



#### 4 - Fall / max. Hook height 240.0 m



Subject to modification without prior notice  
Edition May. 2008

**FLAT-TOP CRANE**

Flat-Top-Kran / Grues Flat-Top  
Подъемные краны без оголовка башни

# BK 330-16

2/4 - Fall

Flat-Top Crane BK 330-16