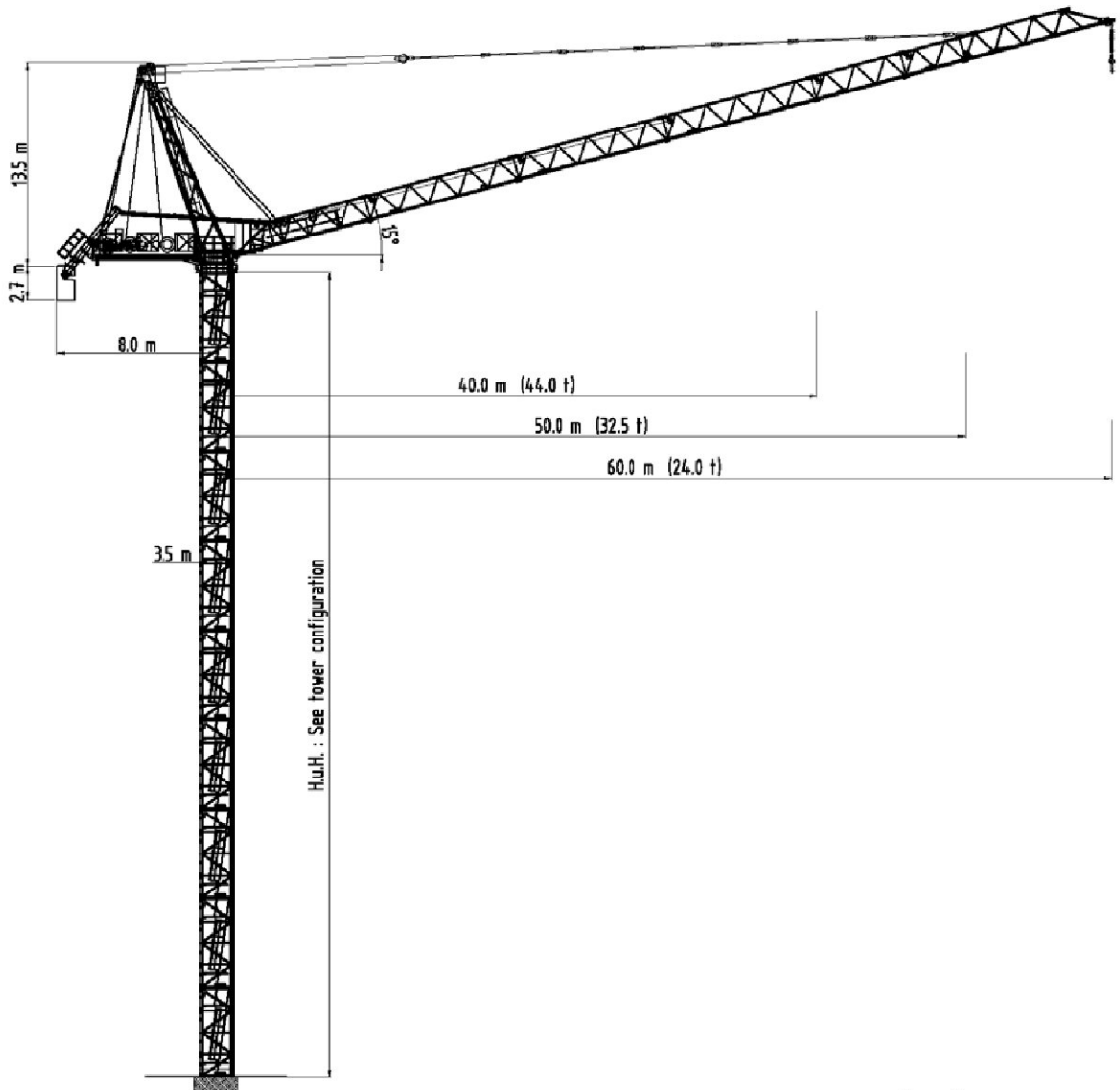


# BN 1200-45/90

1/2 - Fall



Subject to modification without prior notice  
 Edition Apr. 2012



**TÜV** - Certificate

F.E.M. 1.001-1987  
 DIN 15018 H1 - B3

Luffing Crane BN 1200-45/90

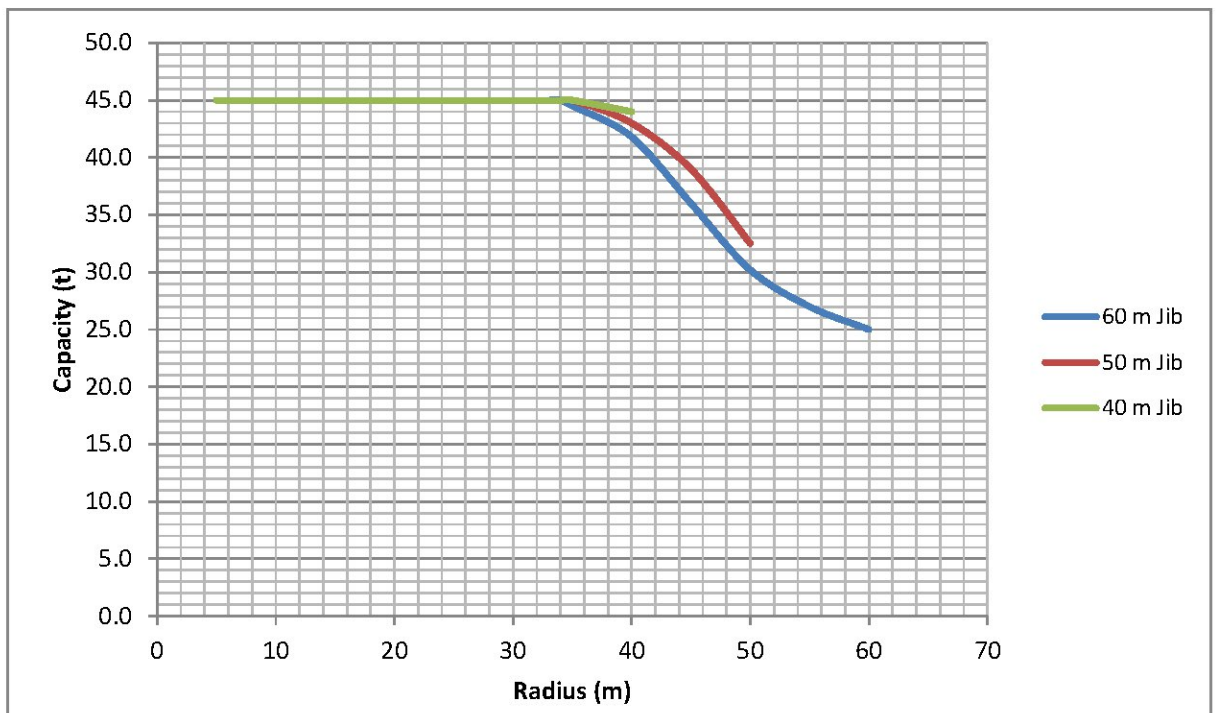
# BN 1200-45/90

1/2 - Fall

## | Radius and Capacity

### 1-Fall

	max.	10	15	20	25	30	35	40	45	50	55	60
<b>60 m Jib</b>	45.0 t (6.0-33.2 m)	45.0	45.0	45.0	45.0	45.0	43.0	41.8	34.4	30.2	28.5	24.0
<b>50 m Jib</b>	45.0 t (5.0-35.2 m)	45.0	45.0	45.0	45.0	45.0	45.0	43.0	39.0	32.5		
<b>40 m Jib</b>	45.0 t (4.25-35.8 m)	45.0	45.0	45.0	45.0	45.0	45.0	44.0				



## | Hook Height

HH max.		900 m
---------	--	-------

Luffing Crane BN 1200-45/90

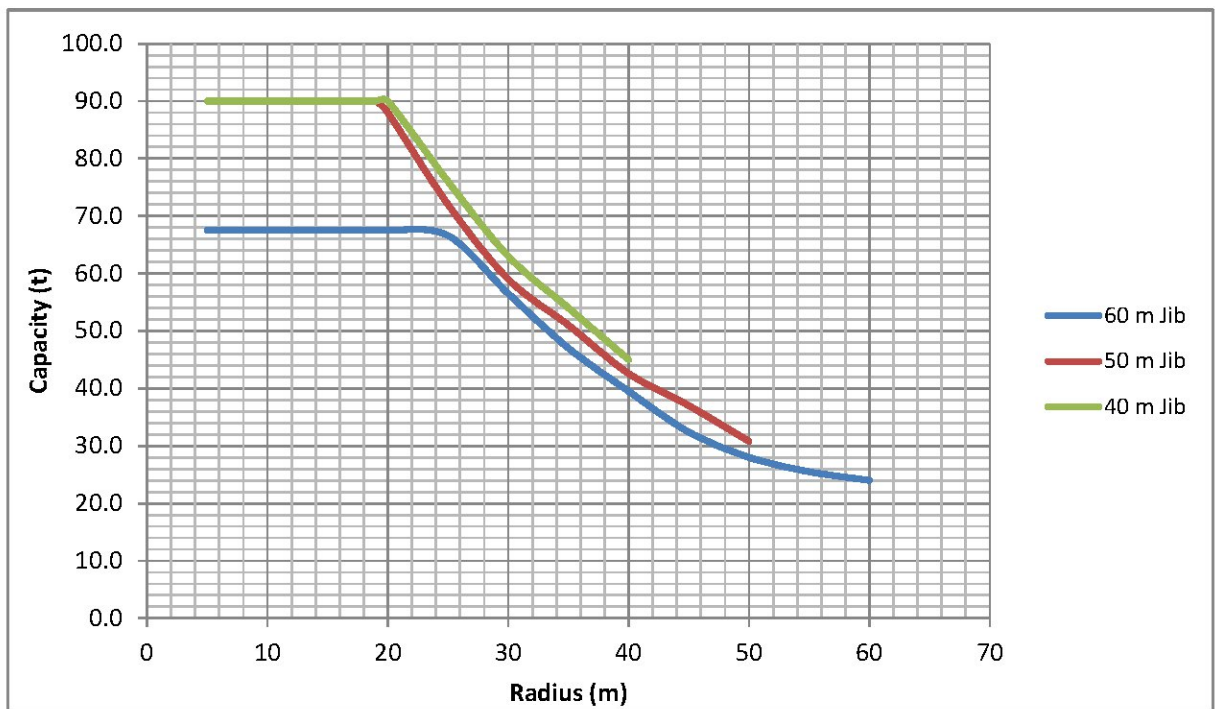
# BN 1200-45/90

1/2 - Fall


## | Radius and Capacity

### 2-Fall

	max.	10	15	20	25	30	35	40	45	50	55	60
<b>60 m Jib</b>	67.5 t (6.0-20.2 m)	67.5	67.5	67.5	67.5	59.1	49.8	40.1	32.4	28.0	26.5	24.0
<b>50 m Jib</b>	90.0 t (5.0-19.4 m)	90.0	90.0	88.6	75.0	58.0	51.4	42.6	37.4	30.8		
<b>40 m Jib</b>	90.0 t (4.25-20.0 m)	90.0	90.0	90.0	77.0	60.1	55.5	43.0				



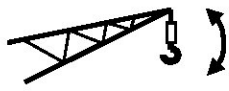
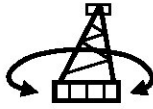

## | Hook Height

HH max.		450 m
---------	---	-------

# BN 1200-45/90

1/2 - Fall

## | Speed

Speed	480 V			
	60 Hz			
	Motor	132.0 kW	3 x 12.0 kW	180 kW
	Speed	10.0 m/min	0.2 rpm	10 - 100 m/min

## | Counterweight

All Lengths	120.0 t
-------------	---------

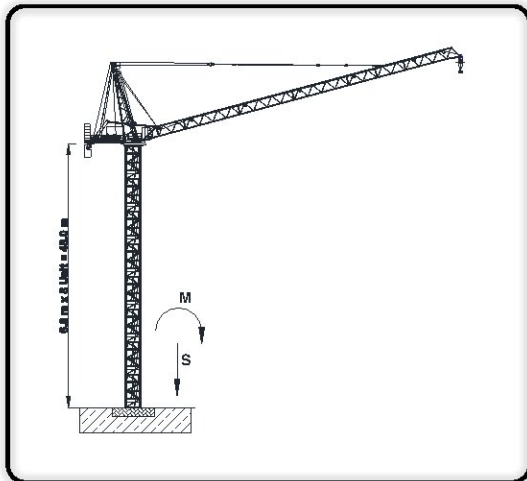
# BN 1200-45/90

## 1/2 - Fall

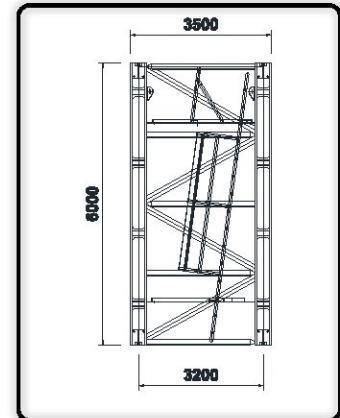
### Specification

<b>E (t)</b>	123t	V-S without load All measures in (mm).
<b>I (t)</b>	145t	
<b>V<sub>1</sub>(t)</b>	295t	
<b>S (t)</b>	300t	
<b>M (mt)</b>	1500t	

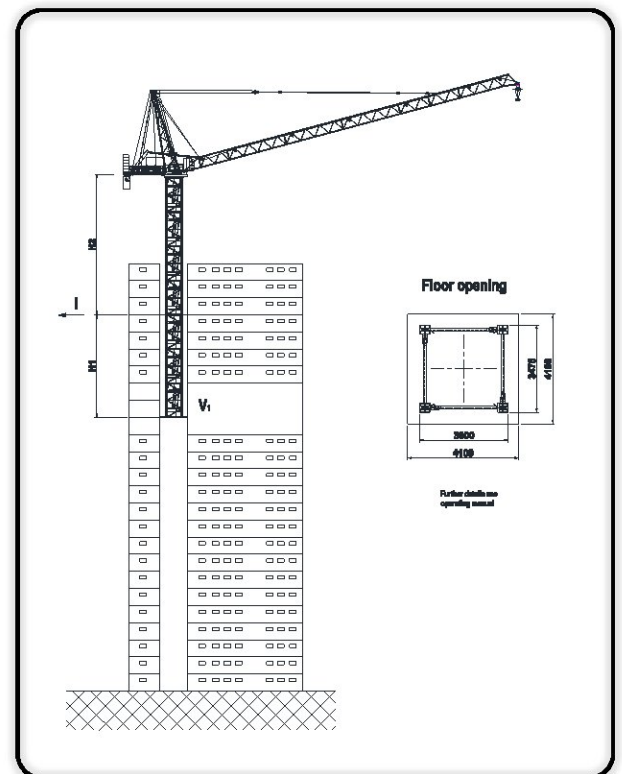
### Static



### Tower Section TS35-06



### Internal



### Tower Configuration for Internal Use

No.	H1 (TS35RS)		H2 (TS35S)	
1	12.0 m	RS x 3 ea	24.0 m	S x 3 ea
2	13.5 m	RS x 3 ea	30.0 m	S x 5 ea
3	18.0 m	RS x 4 ea	30.0 m	S x 4 ea

- \* RS: Reinforced Tower Section (6.0 m)
- \* S: Standard Tower Section (6.0 m)

Subject to modification without prior notice  
Edition Apr. 2012

# BN 1200-45/90

1/2 - Fall

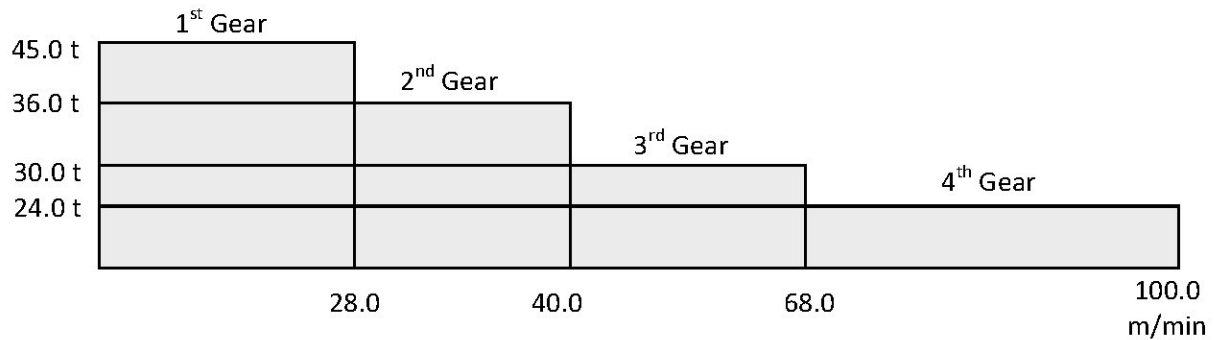
## | Hoist Unit 180 S12.5 L900

180 kW AC Slipring motor with 4-step Gearbox eddy current brake for precision hoisting with reduction of 1:10.

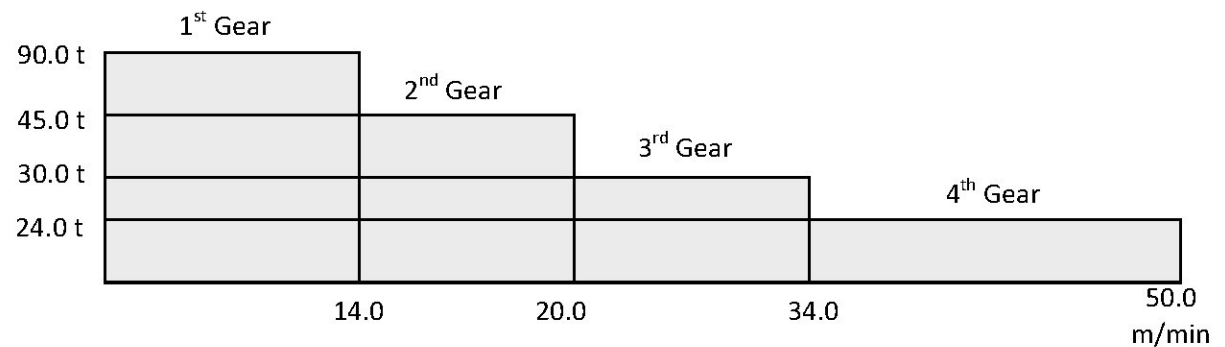
Equipment: double shoe brake with automatic adjustment and brake lining wear and tear control, control cabinet - contactor controlled, (PLC control by request) separate resistor cabinet, hoist limit switch grooved drum for hoist rope 54 mm diameter, on erection frame ready for operation.

## | Speed with 480 V / 60 Hz

### 1-Fall (max. Hook Height 900.0 m)



### 2-Fall (max. Hook Height 450.0 m)



Luffing Crane BN 1200-45/90

Subject to modification without prior notice  
 Edition Apr. 2012

LUFFING CRANE

Nadelauslegerkran / Grues à flèche relevable  
Gru con braccio a volata variabile

# BN 1200-45/90

1/2 - Fall

Luffing Crane BN 1200-45/90