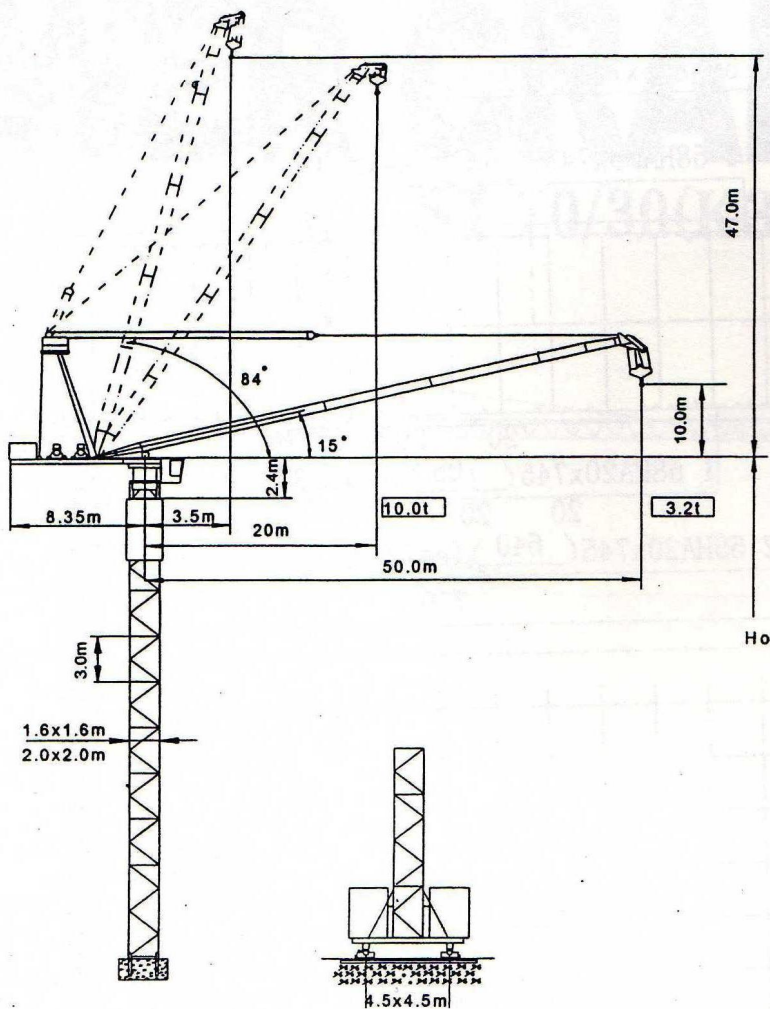
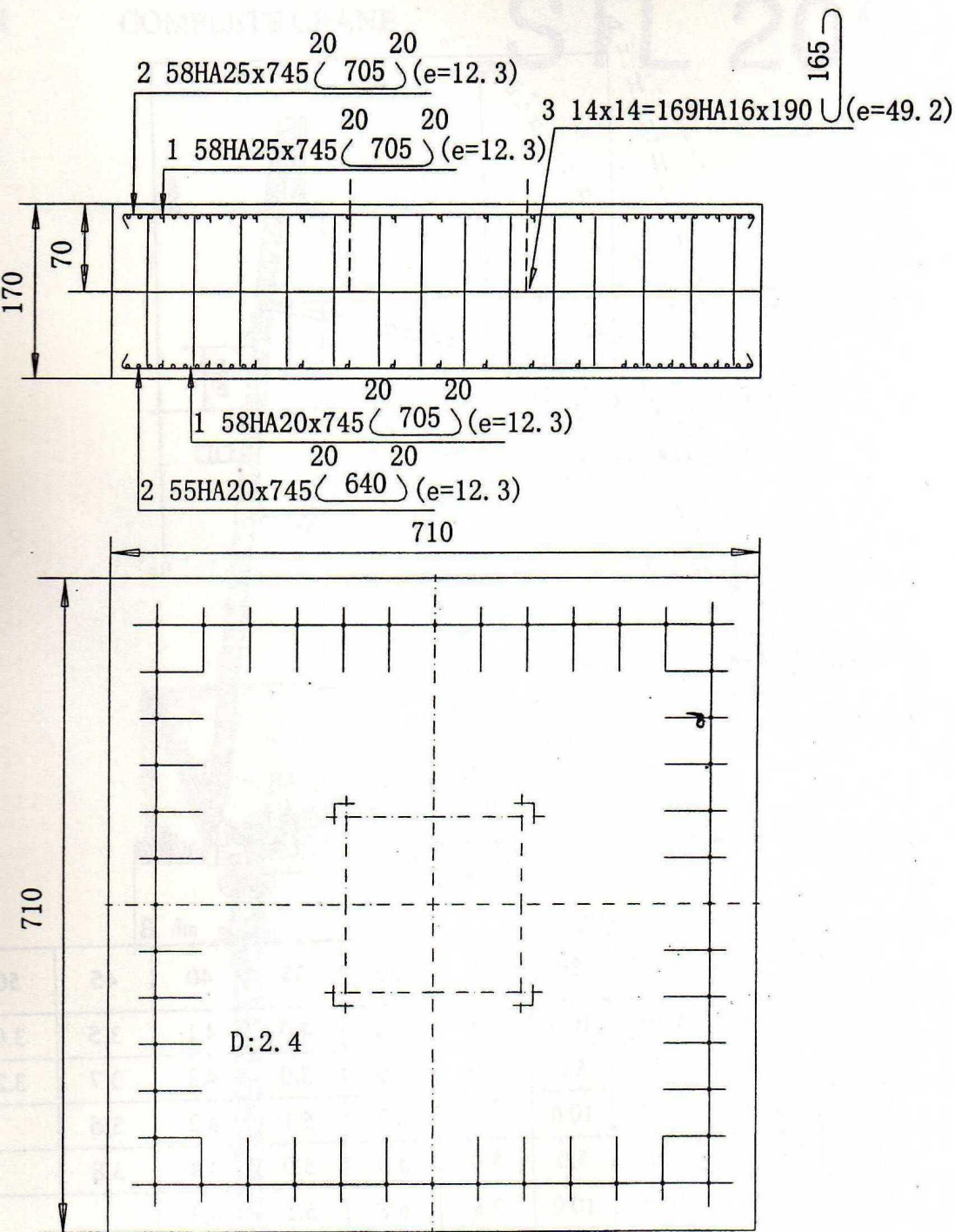


10t



R	倍率 Fall	R(max) m	C(max) t	20	25	30	35	40	45	50
50	IV	20.0	10.0	10.0	7.5	6.0	4.9	4.1	3.5	3.0
	II	35.0	5.0	5.0	5.0	5.0	5.0	4.3	3.7	3.2
45	IV	20.0	10.0	10.0	7.7	6.2	5.1	4.2	3.6	
	II	35.0	5.0	5.0	5.0	5.0	5.0	4.4	3.8	
40	IV	20.0	10.0	10.0	7.8	6.2	5.1	4.3		
	II	37.0	5.0	5.0	5.0	5.0	5.0	4.5		
35	IV	20.0	10.0	10.0	8.0	6.4	5.3			
	II	35.0	5.0	5.0	5.0	5.0	5.0			
30	IV	20.0	10.0	10.0	8.1	6.5				
	II	30.0	5.0	5.0	5.0	5.0				



M205N
 L=710cm; I=710cm; H=170cm; V=85m³

Fig. 1-3-3 (e)

COMPLETE CRANE

STL 203

