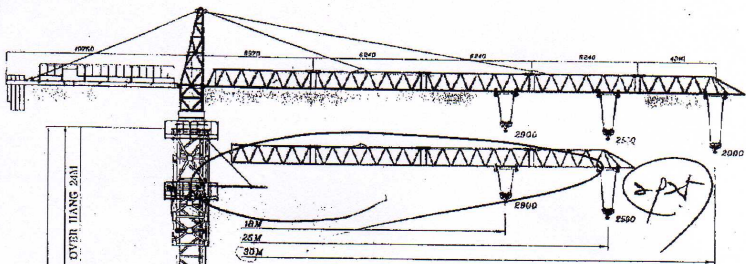


SAMMOK

SAMMOK
Tower Crane
SM-2930W



Technical Specification

Specification		SM-2930W			
Capacity	Radius	30M	15m	25m	30m
		25M	15m	25m	
	Rated Load		2900kg	2500kg	2000kg
	Max. Height		150m		
	Free Standing Height		45m		
Hoisting	Over Hang Height		24m		
	Motor		15 / 7.5 kw		
Slewing	Speed		12 / 26 m/min		
	Wire Rope		19mm		
	Motor		3.75 kw		
Trolley	Speed		0.5 rpm		
	Slewing Angle		540°		
Climbing	Motor		1.5 kw		
	Speed		20 m/min		
Electricity	Motor		3.75 kw		
	Speed		0.45 m/min		
	Hyd. Cylinder		Ø140		
	Electricity		380 / 440V, 60Hz		

본 사양은 성능 개선을 위하여 사전 통보없이 변경될 수 있습니다.
(This specification is subject to change without prior notice for high efficiency.)

Concrete Foundation

