



# **KUMKANG CONSTRUCTION EQUIPMENT**

**KLC 1520**  
**LUFFING BOOM CRANE**

# KLC1520

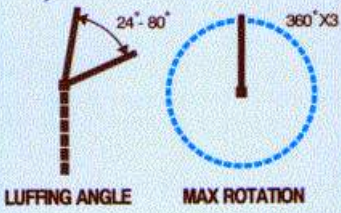
## LUFFING BOOM CRANE

**H** MAX HEIGHT  
75 m

**C** WORKING RADIUS  
15 m

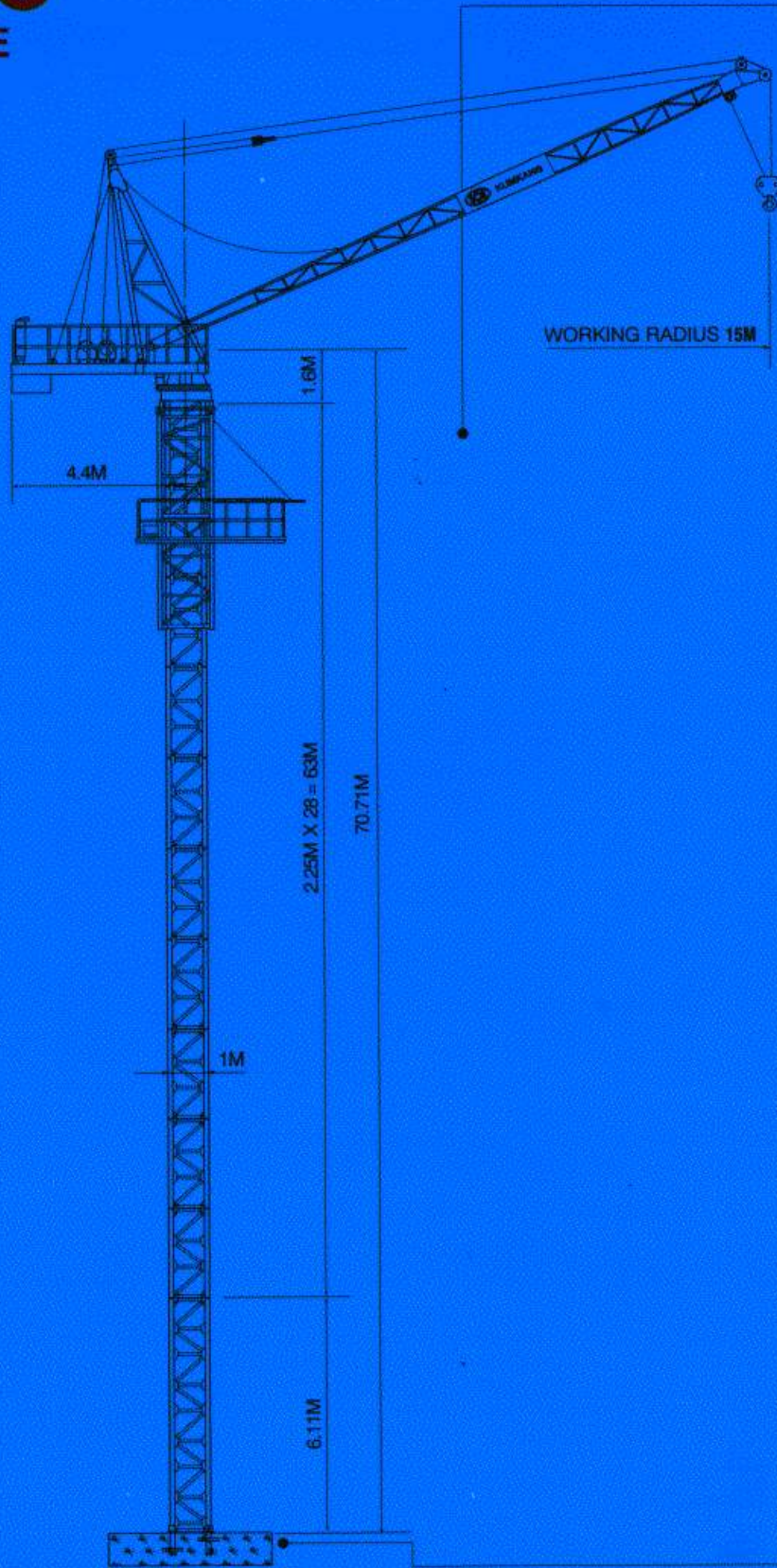
**S** SPEED  
12/24 m/min

**t** RATED LOAD  
2000 Kg



75m

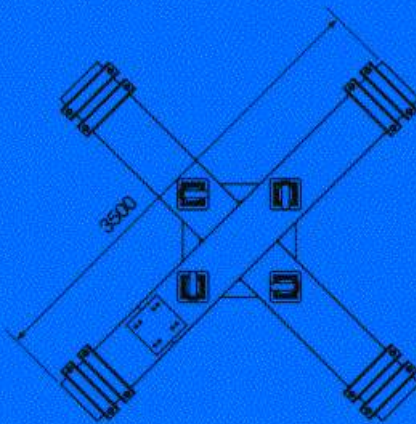
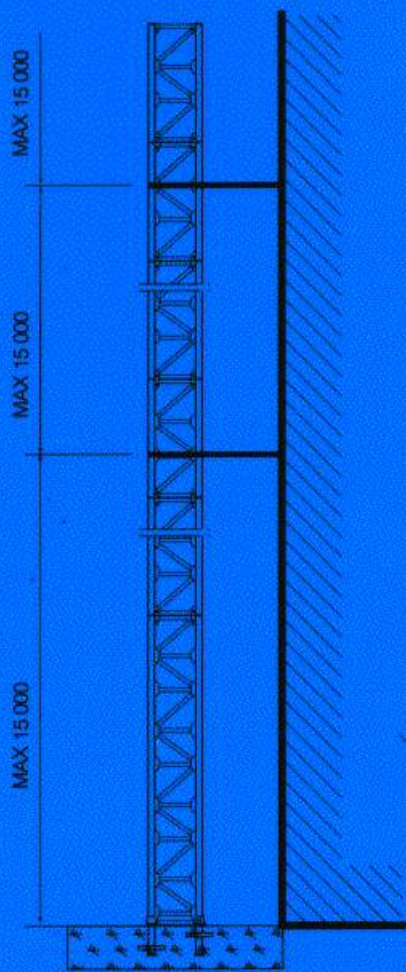
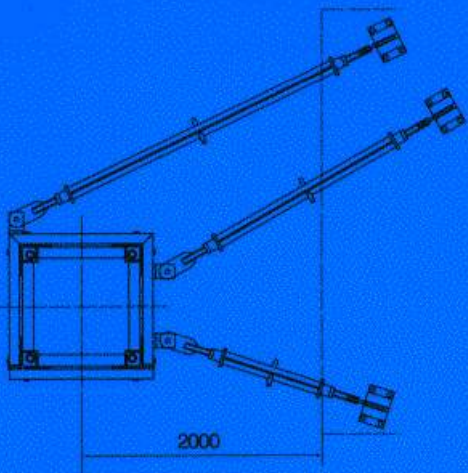
MAX HEIGHT



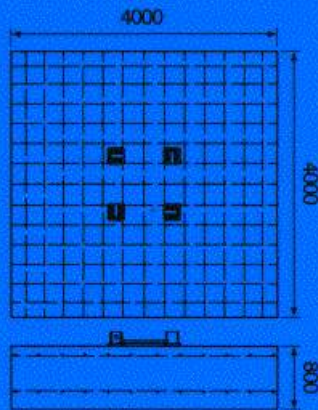
**WALL TIE**

**SPEC**

DESCRIPTION		SPECIFICATION
CAPACITY	RATED LOAD	2000KG(24°-80°)
	RADIUS	15M
	H.U.HOOK	75M
HOISTING	SPEED	12/24 M/MIN
	WIRE ROPE	φ 12X2 FALL
	MOTOR	5.5KW/10KWX4/8P
LUFFING	SPEED	28 DEGREE/MIN
	LUFFING ANGLE	24°-80°
	WIRE ROPE	φ 10, φ 16
	MOTOR	4.5KWX8P
SLEWING	SPEED	0.5REV/MIN
	MOTOR	0.9KWX4P
	ROT CONTROL	CAM TYPE LIMIT S/W
CLIMBING	SPEED	750 MM/MIN
	MOTOR	2.2KWX4P
	HYD. CYLINDER	φ 100X850 <sup>2</sup>
MAX FREE STANDING HEIGHT		25M
POWER SOURCE		3φ X440V

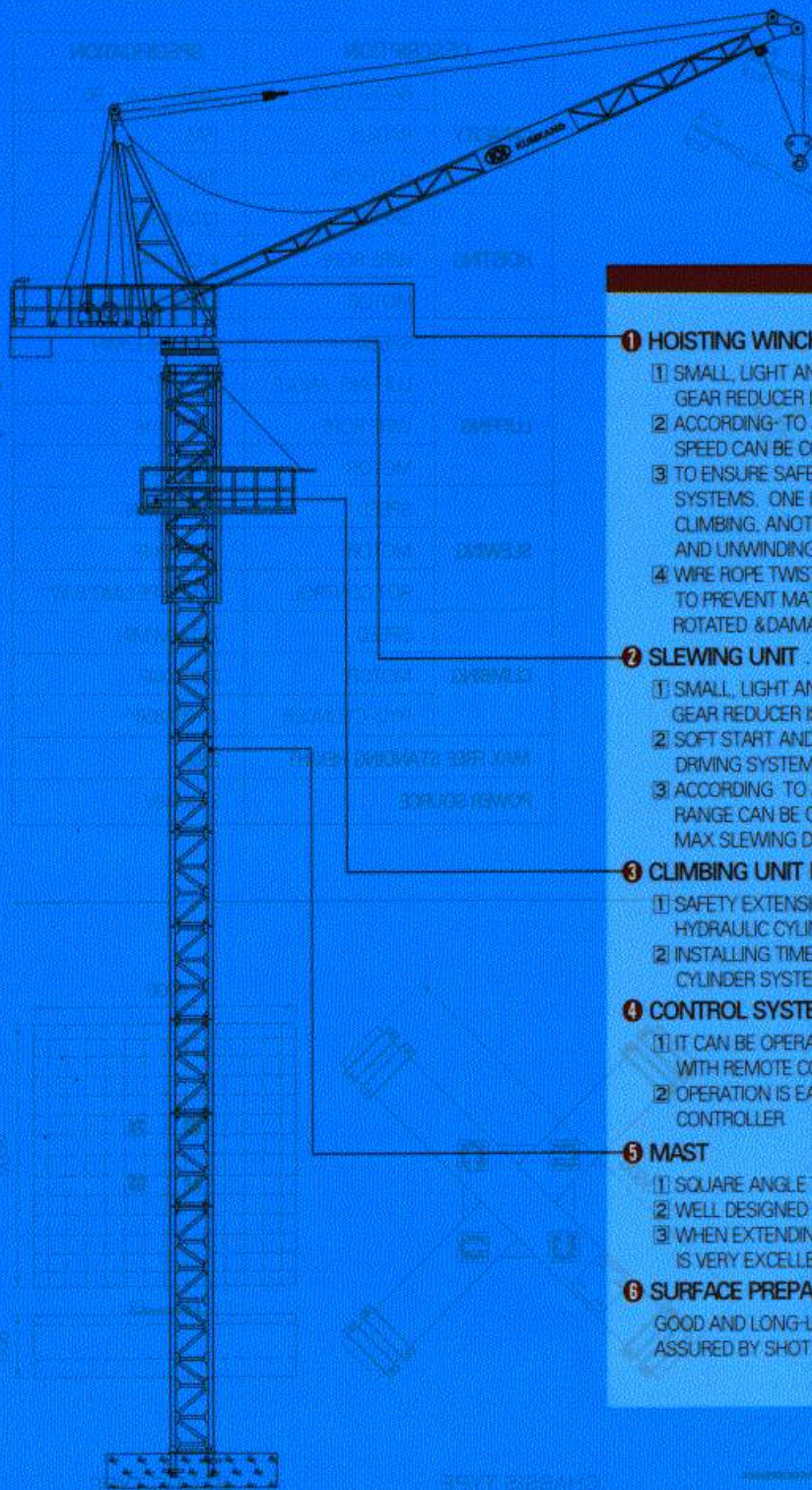


CHASSIS TYPE



STATIC TYPE

**FOUNDATION**



## 1 HOISTING WINCH DEVICE

- 1 SMALL, LIGHT AND HIGH EFFICIENT PLANETARY GEAR REDUCER IS EQUIPPED.
- 2 ACCORDING TO JOB SITE CONDITION, SPEED CAN BE CONTROLLED.
- 3 TO ENSURE SAFETY, THERE ARE TWO SAFETY SYSTEMS. ONE IS TO PREVENT HOOK'S OVER CLIMBING, ANOTHER IS TO PREVENT OVER WINDING AND UNWINDING OF ROPE
- 4 WIRE ROPE TWIST COMPENSATOR IS EQUIPPED TO PREVENT MATERIALS AND ROPES FROM BEING ROTATED & DAMAGED

## 2 SLEWING UNIT

- 1 SMALL, LIGHT AND HIGH EFFICIENT PLANETARY GEAR REDUCER IS EQUIPPED.
- 2 SOFT START AND STOP CAN BE DONE BY REACTOR DRIVING SYSTEM
- 3 ACCORDING TO JOB SITE CONDITION, SLEWING RANGE CAN BE CONTROLLED BY CAM TYPE LIMIT S/W. MAX SLEWING DEGREE IS 360° X 3

## 3 CLIMBING UNIT FOR EXTENDING MASTS

- 1 SAFETY EXTENSION WORKS CAN BE ENSURED BY HYDRAULIC CYLINDER SYSTEM.
- 2 INSTALLING TIME CAN BE SHORTENED BY HYDRAULIC CYLINDER SYSTEM

## 4 CONTROL SYSTEM

- 1 IT CAN BE OPERATED ON THE GROUND OR IN BUILDING WITH REMOTE CONTROLLER
- 2 OPERATION IS EASY BY USING LEVER TYPE CONTROLLER

## 5 MAST

- 1 SQUARE ANGLE TRUSS STRUCTURE
- 2 WELL DESIGNED CONNECTING BLOCK
- 3 WHEN EXTENDING WORKING, WORKING EFFICIENCY IS VERY EXCELLENT BY GUIDE ROLLER

## 6 SURFACE PREPARATION

- GOOD AND LONG-LAST FINISHING SURFACE IS ASSURED BY SHOT BLASTING.

**KUMKANG PRECISION IND. CO., LTD.**

HEAD OFFICE: TEL:02-565-3651/2091 FAX:02-565-6030  
HYUNJIN BLDG 1309-3, SEOCHO-DONG, SEOCHO-GU, S. KOREA  
INCHEON: TEL:0434-534-2611/7 FAX:0434-534-2618

PUSAN OFFICE: TEL:051-632-8861/5 FAX:051-639-8886  
TAEJU OFFICE: TEL:033-741-8881/5 FAX:033-741-8885  
MWANGJU OFFICE: TEL:062-675-0534/7 FAX:062-675-0538

TAEJEON OFFICE: TEL:042-632-7475/6 FAX:042-632-7479  
YOUNGDONG OFFICE: TEL:0391-645-5851/4 FAX:0391-645-5855  
INCHEON OFFICE: TEL:032-421-8191/4 FAX:032-421-8195