

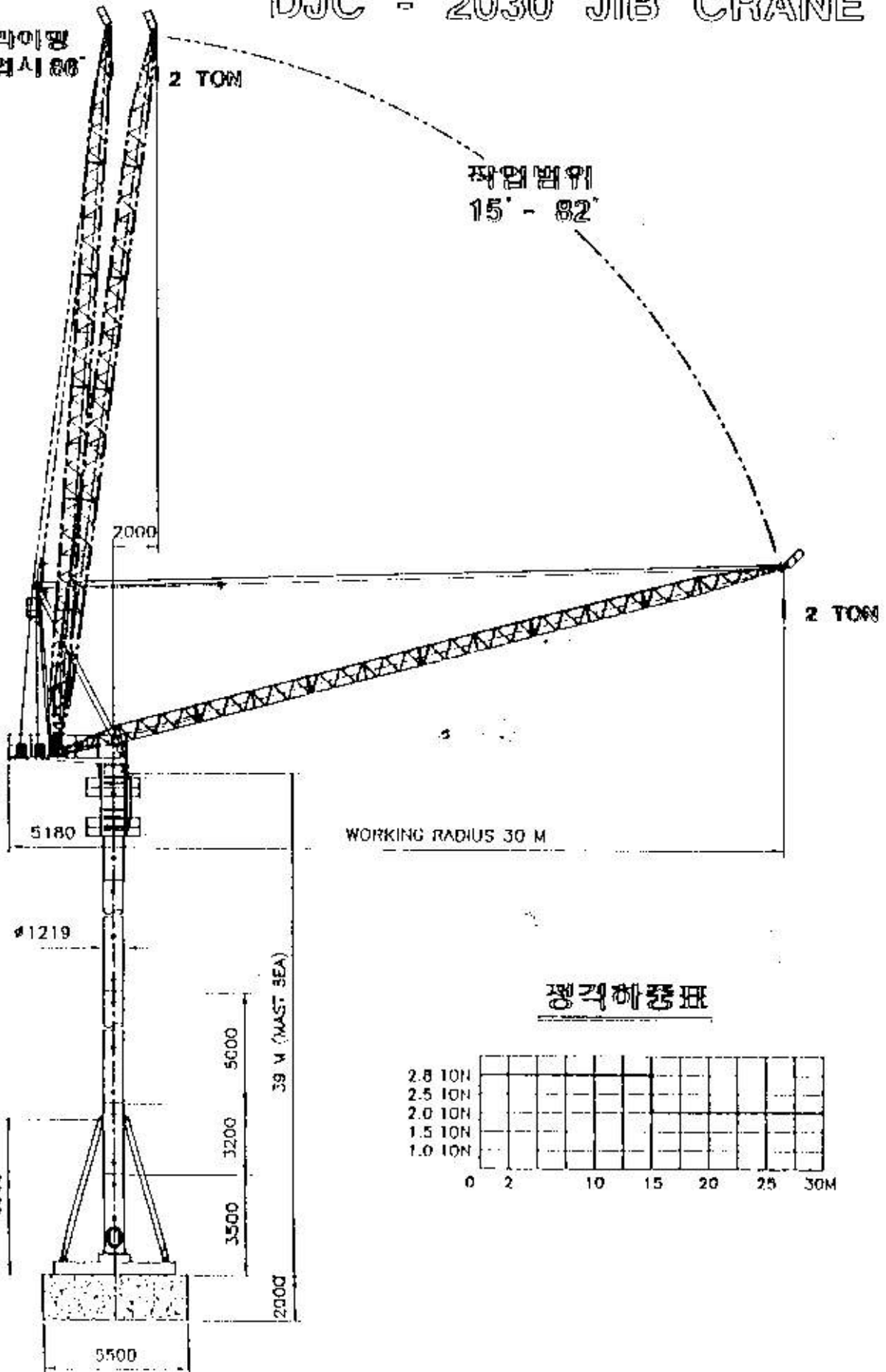
DJC - 2030 JIB CRANE

크라이프
작업시 80°

2 TON

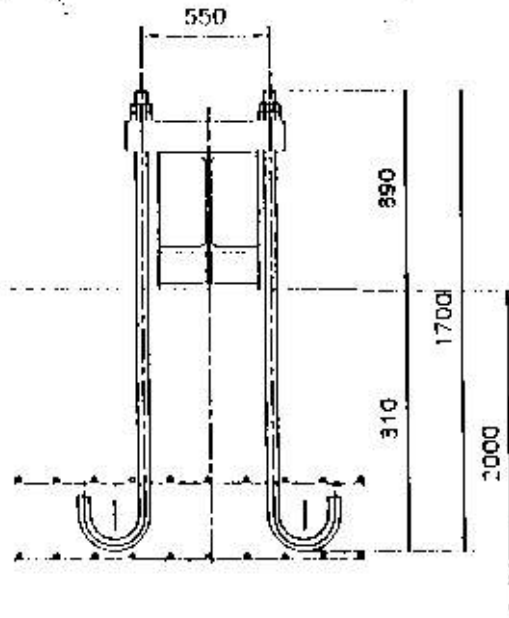
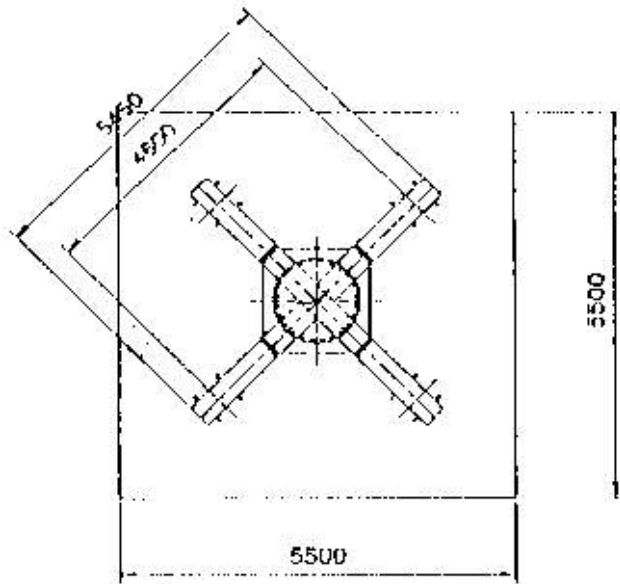
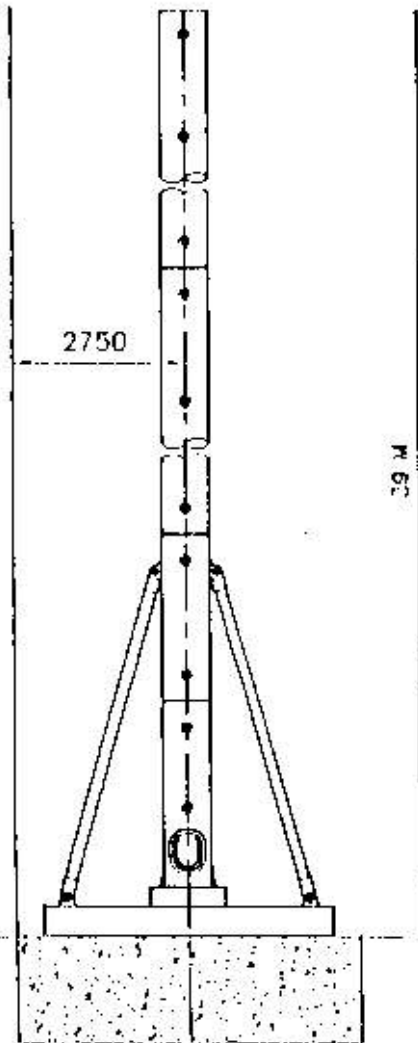
작업범위
15° - 82°

2 TON



■ 사양

항목	형식
정기세정	2 TON - 2.8 TON
적입빈경	30 M
회내양정	65 M
권상속도	3 - 25 M/MIN
권상출력	1.9 - 15 KW
거배속도	1.51 - 12.7 M/MIN
거배출력	1.9 - 15 KW
선회속도	0.3 R.P.M
선회출력	5.5 KW (유입이)
송강방식	유입식
송강속도	0.3 - 1.3 M/MIN
바스크입이	1219 KG x 5H / PCS
바스크중량	2400 KG
안전장치	과부하방지장치, 과전방지장치 기압제한장치, 선회제한장치 회차방지장치
전원	380V 3상 60HZ
제조	대원공업, 내원건설





DAIJUNG JIB CRANE

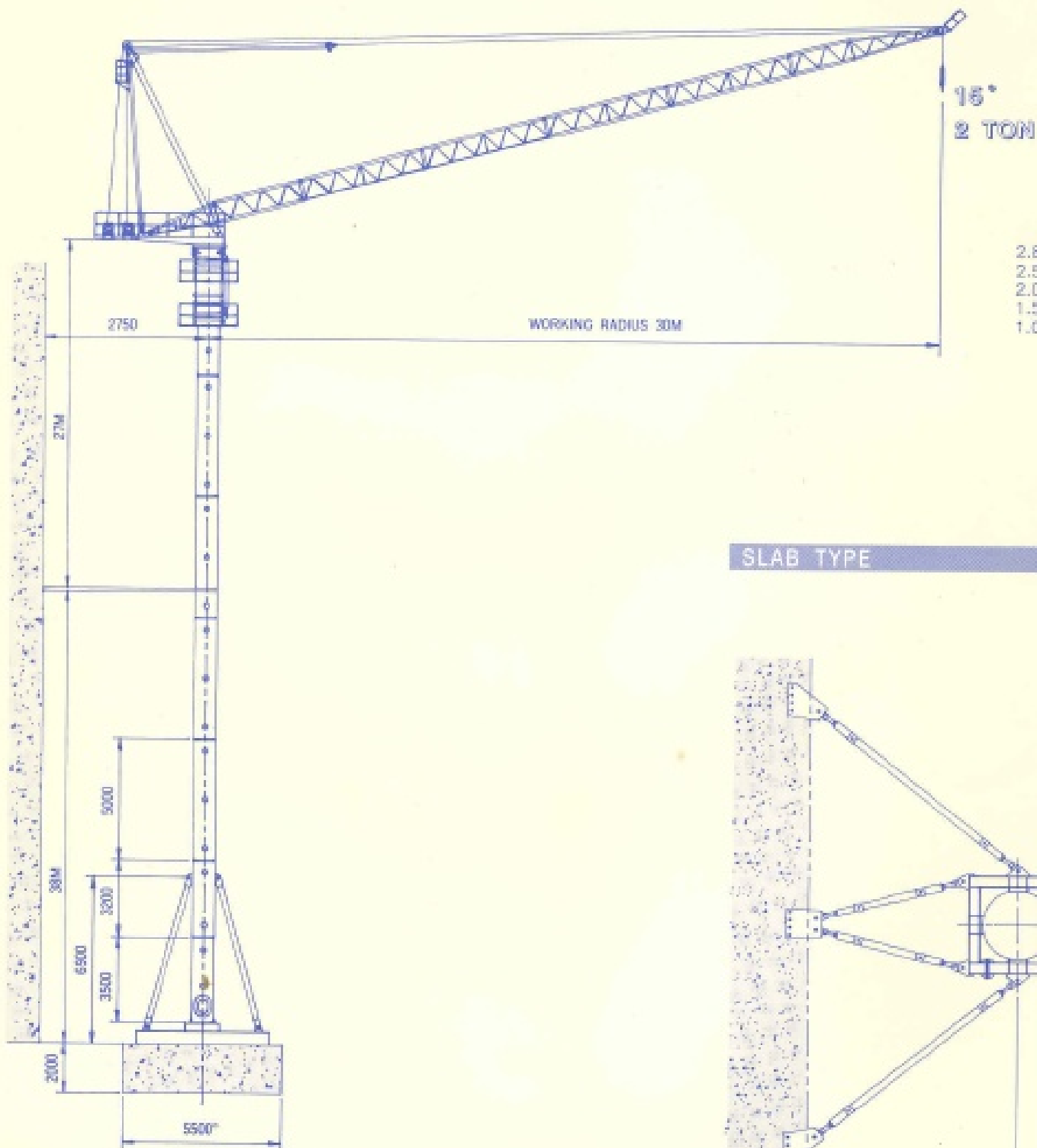


DJC 2030

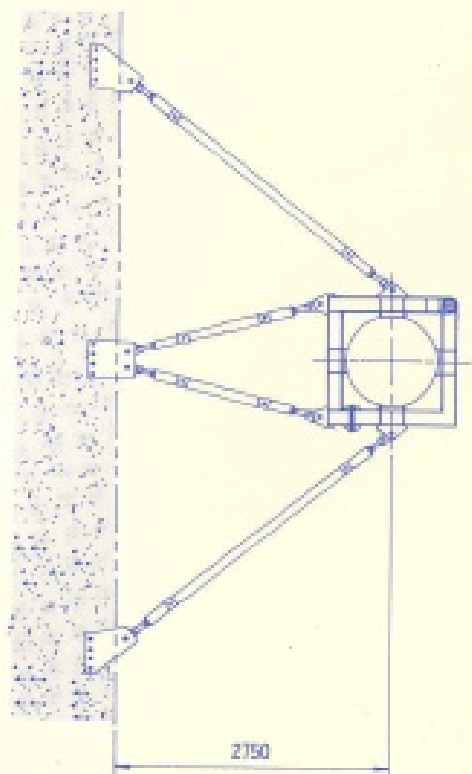
DAIJUNG MACHINERY & INDUSTRY CO., LTD.

DJC2030

LOAD



SLAB TYPE

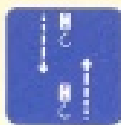




MAX. HEIGHT
90M



WORKING RADIUS
30M



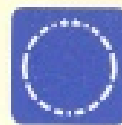
HOISTING
3~25M/MIN.



LOADING CAPACITY
2~2.7TON

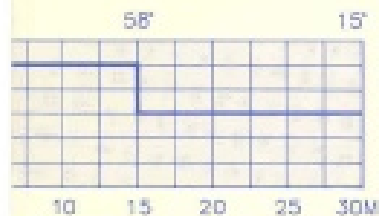


LUFFING
3~16.3 R/MIN

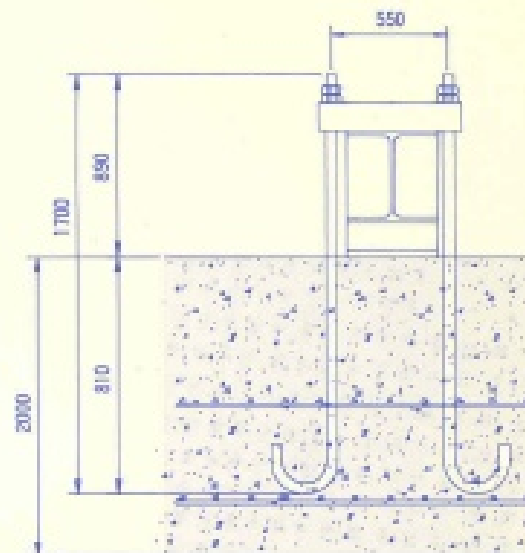
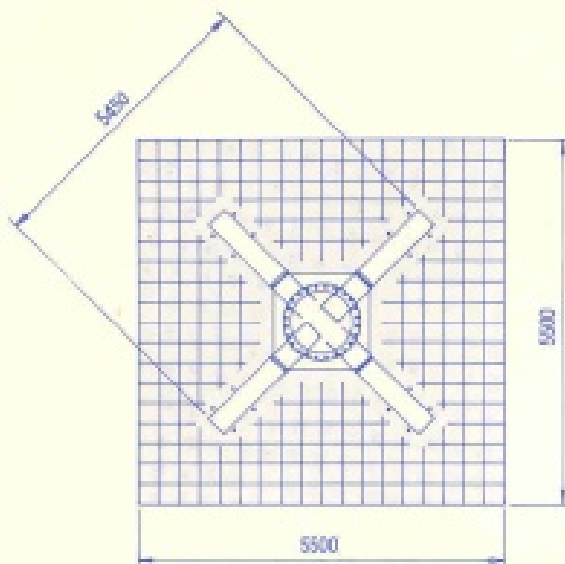


SLEWING
0.3 R.P.M

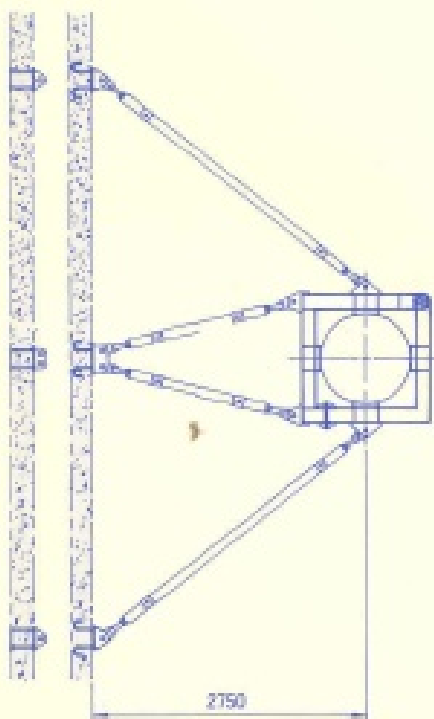
ING TABLE



FOUNDATION



WALL TYPE



CRANE SPECIFICATION

DESCRIPTION		SPECIFICATION
LOADING CAPACITY		2~2.8 TON
WORKING RADIUS		30 M
MAX. HEIGHT		90 M
POWER	HOISTING	1.2~15 Kw
	LUFFING	1.2~15 Kw
	SLEWING	5.5 Kw(HYD. TYPE)
SPEED	HOISTING	3~25 M/MIN.
	LUFFING	2~16.3 M/MIN.
	SLEWING	0.3 R.P.M
MAST	WEIGHT	2,400 Kg
	DIMENSION	φ1,219 × 5,000 L/EA
POWER SOURCE		380V · 3PH · 60Hz
CLIMBING METHOD		HYDRAULIC TYPE
SAFETY SYSTEM		<ul style="list-style-type: none"> • OVER LOAD LIMIT S/W • HOOK OVER RUNNING LIMIT S/W • UP-DOWN LUFFING LIMIT S/W • SLEWING LIMIT S/W • GOVERNOR

DJC2030

DESCRIPTION		Q'TY	WEIGHT
BASE FRAME	BASE FRAME	1	5,570Kg
BODY	SLEWING FRAME	1	
	SLEWING GEAR	1	
	CONTROL PANEL	1	
	LUFFING WINCH(15.Kw)	1	
	LUFFING WIRE(φ12)	220M	
	GANTRY FRONT	1	
	GANTRY REAR	1	
	HOISTING WINCH(9.75Kw)	1	
	HOISTING WIRE ROPE(φ12)	220M	
	SUB TOTAL		8,540Kg
J I B (BOOM)	LOWER BOOM	1	
	CENTER BOOM	5	
	TOP BOOM	1	
	LUFFING BLOCK	2	
	PENDANT WIRE(φ22)	2	
	HOOK BLOCK(2")	1	
	SUB TOTAL		2,790Kg
CLIMBING UNIT	TOP & BOTTOM CLIMBING ASS'Y	1	4,200Kg
MAST	STD.MAST(φ1,219x5M)	1	2,400Kg
	CENTER BOOM(φ1,219x5M)	1	2,800Kg
	LOWER MAST(φ1,219x3M)	1	930Kg
	BOTTOM MAST(φ1,219x6.7M)	1	4,550Kg
	MAST STAY	4	2,180Kg

* Specifications contained herein are subject to change without notice

DAIJUNG MACHINERY & INDUSTRY CO., LTD.

HEAD OFFICE

#115-1, Nonhyun-Dong, Kangnam-ku, Seoul, Korea
TEL:(02)548-6511 FAX:(02)543-9756

FACTORY

#60-9, Shinun-Ri, Youngin-Myon, Asan-Si, Chungnam
TEL:(0418)44-6101 FAX:(0418)44-6106