

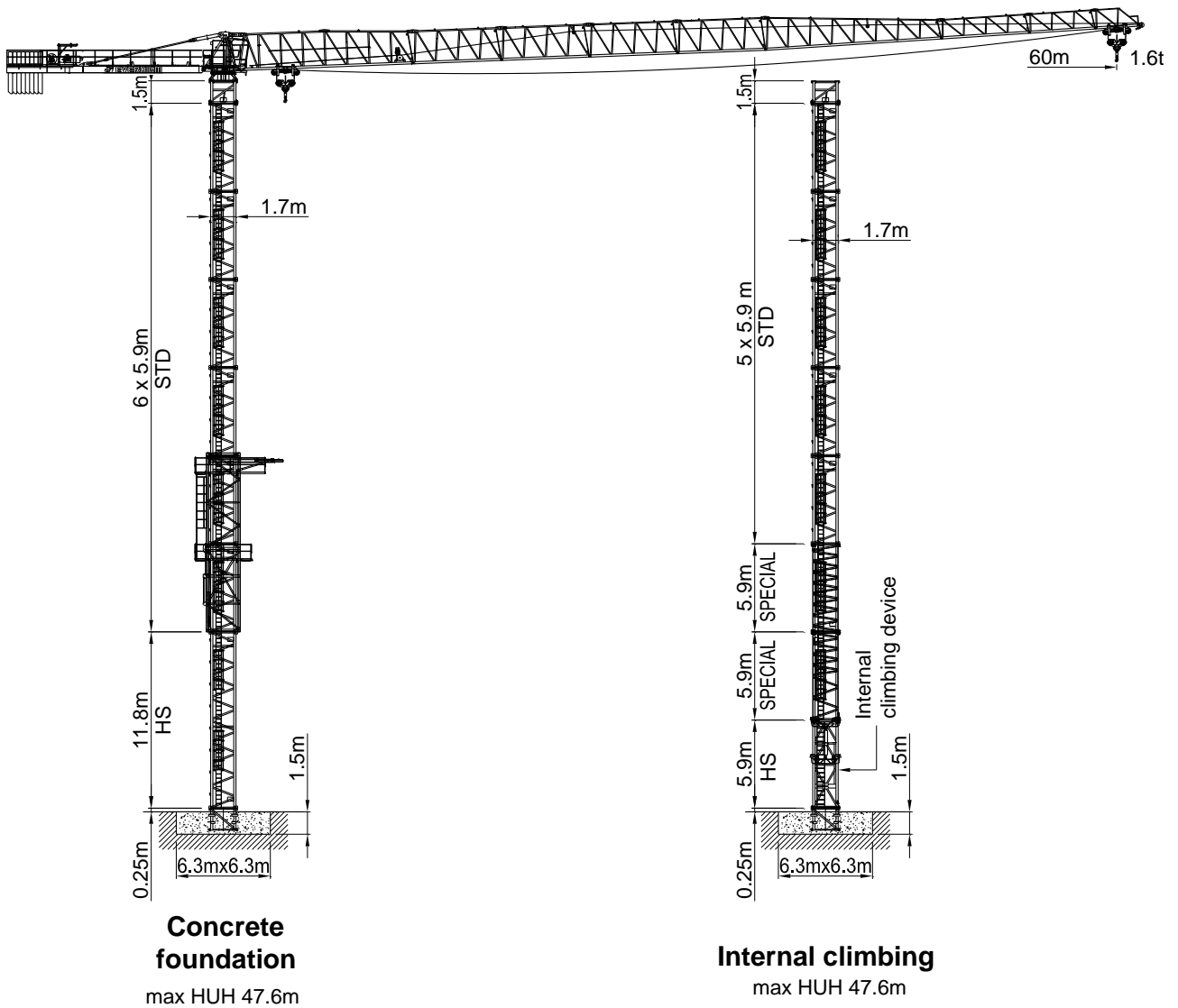
Build the future

www.everdigm.com

EVERDIGM

Tower crane

ED130F-8

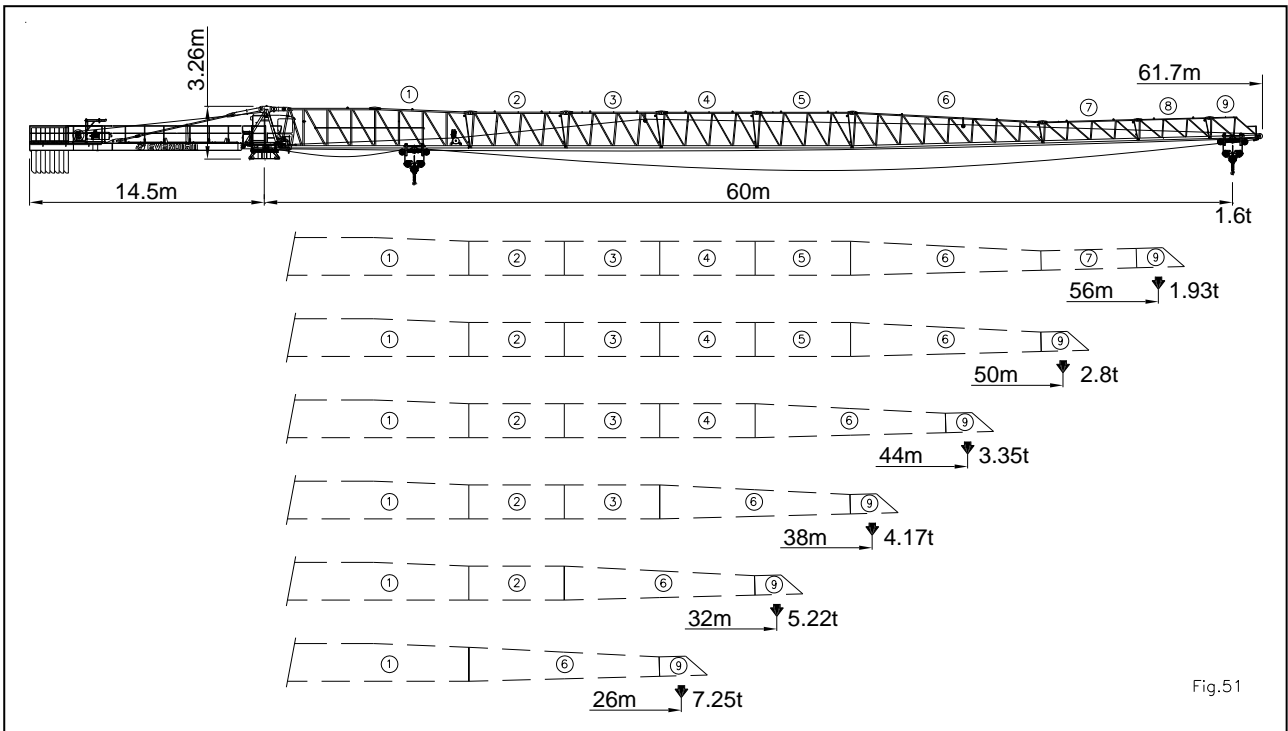


- FEM 1.001 A4
- GOST – R/RTN
- 건설기계 안전기준에 관한 규칙

HUH : Height under hook

01. Jib combination

ED130F-8



02. Hoisting height

ED130F-8

8			
7			
6	47.6		
5	41.7	47.6	
4	35.8	41.7	
3	29.9	35.8	
2	24.0	29.9	
1	18.1	24.0	
0	12.2	18.1	
5.9m Mast	m	m	
	Concrete Foundation	Internal climbing	

03. Radius and capacity

ED130F-8

Jib length m	Max capacity (m/kg)		Radius & Hoisting capacity										
	2 fall	4 fall	m / kg	16	20	24	26	32	38	44	50	56	60
60	2.4 – 29 4,000	2.4 – 16.1 8,000	4 fall	8,000	6,310	5,108	4,646	3,606	2,895	2,377	1,984	1,708	1,600
			2 fall	4,000	4,000	4,000	4,000	3,606	2,895	2,377	1,984	1,708	1,600
56	2.4 – 32 4,000	2.4 – 18.1 8,000	4 fall	8,000	7,143	5,792	5,272	4,102	3,302	2,720	2,277	1,930	
			2 fall	4,000	4,000	4,000	4,000	4,000	3,302	2,720	2,277	1,930	
50	2.4 – 37 4,000	2.4 – 21.2 8,000	4 fall	8,000	8,000	6,879	6,276	4,918	3,989	3,313	2,800		
			2 fall	4,000	4,000	4,000	4,000	4,000	3,989	3,313	2,800		
44	2.4 – 38 4,000	2.4 – 22.1 8,000	4 fall	8,000	8,000	7,225	6,569	5,094	4,084	3,350			
			2 fall	4,000	4,000	4,000	4,000	4,000	4,000	3,350			
38	2.4 – 38 4,000	2.4 – 22.8 8,000	4 fall	8,000	8,000	7,533	6,831	5,250	4,168				
			2 fall	4,000	4,000	4,000	4,000	4,000	4,000				
32	2.4 – 32 4,000	2.4 – 23.2 8,000	4 fall	8,000	8,000	7,588	6,858	5,216					
			2 fall	4,000	4,000	4,000	4,000	4,000					
26	2.4 – 26 4,000	2.4 – 24.1 8,000	4 fall	8,000	8,000	8,000	7,254						
			2 fall	4,000	4,000	4,000	4,000						

04. Driving performance

ED130F-8

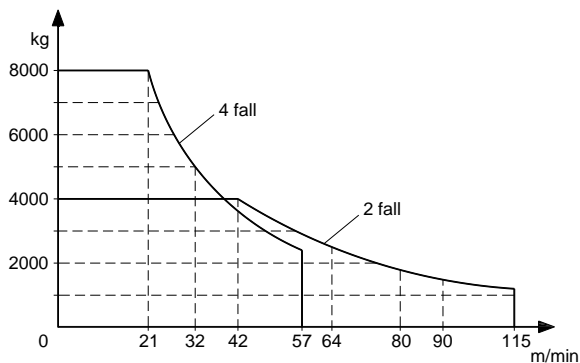
Hoist winch 37kW – 37HF550 – AC – Stepless



2 Part 1,200kg 0 ~ 115m/min
Line 4,000kg 0 ~ 42m/min



4 Part 2,400kg 0 ~ 57m/min
Line 8,000kg 0 ~ 21m/min



Electrical information

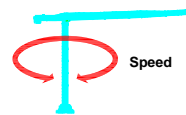
Power supply 3ph x 380V, 50/60Hz (Standard)
3ph x 415V, 50/60Hz (Option)

Control circuit 24Vdc

Power consumption 70kVA

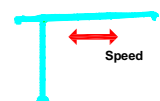
Power cable PNCT x 35SQ x 4Core

Slewing machinery- 2Drive units-AC-Stepless



2x5.5kW – AC
0 – 0.74rpm

Trolley winch 6.6kW - AC - Stepless



0 ~ 4,000kg 0 ~ 79m/min
8,000kg 0 ~ 40m/min

Hoist wire rope - standard 400m

Necessary wire length according to height under hook

$$W = (H \times P) + R + 35$$





- W (Wire length)
- H (Height under hook)
- P (Part line) = 2 or 4
- R (Jib length)

Upper part

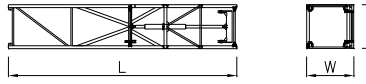
Description	Q'ty	Sketch	Dimension(m)			Weight(kg)		
			L	W	H	Unit	Total	
Jib single Element	No. 1	1		11.940	1.240	2.510	2,440	-
	No. 2	1		6.170	1.240	2.280	920	-
	No. 3	1		6.170	1.240	2.280	840	-
	No. 4	1		6.160	1.240	2.280	690	-
Jib single Element	No. 5	1		6.160	1.240	2.270	650	-
	No. 6	1		12.050	1.240	2.270	1,260	-
	No. 7	1		6.130	1.240	1.370	510	-
	No. 8	1		4.640	1.240	1.350	370	-
	NO. 9	1		3.360	1.240	1.350	270	-
Initial counter jib ass'y, Tie rod, Handrail etc.	1		8.155	1.597	0.760	4,690	-	
End counter jib ass'y, Hoist winch, Handrail etc.	1		5.220	1.528	1.547	3,460	-	
Turn table ass'y, Slewing ass'y etc.	1		2.194	2.688	2.063	3,150	-	
Top head & Connection plate	1		2.031	1.279	2.322	1,330	-	
Operating cabin & Platform ass'y	1		2.344	1.531	2.201	1,200	-	
Panel frame & Electric panel	1		1.425	2.165	2.135	630	-	

05. Packing list | continued |



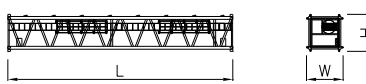

ED130F-8

Description	Q'ty	Sketch	Dimension(m)			Weight(kg)	
			L	W	H	Unit	Total
Trolley winch ass'y	1		1.442	0.540	0.891	320	-
Trolley ass'y	1		1.880	1.478	0.755	300	-
Hook block ass'y	1		1.290	0.291	1.819	265	-
Counter weight block	8		1.240	0.285	2.700	1,850	14,800




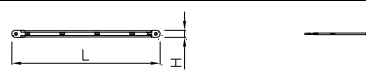

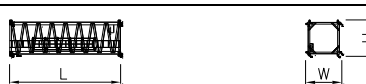
Climbing equipment

Climbing cage ass'y	1		12.000	2.485	2.280	6,180	-
---------------------	---	---	--------	-------	-------	-------	---

Mast

Connection mast	1		1.550	1.896	1.896	655	-
5.9m Mast section	-		5.900	1.920	1.920	1,910	-
11.8m Mast section	-		11.800	1.920	1.920	4,180	-
Foundation anchor	1		1.730	1.960	1.960	610	-

Internal climbing equipment

Climbing section ass'y	1		6.108	1.920	1.920	3,530	-
Climbing frame(Collar)	6		2.310	1.365	0.500	565	3390
Resting beam	4		1.750	0.182	0.330	130	520
Ladder	6		3.820	0.080	0.180	120	720
	2		2.920	0.080	0.180	85	170
6m 1 st Special Mast	1		5.900	1.920	1.920	2325	-
6m 2 nd Special Mast	1		5.900	1.920	1.920	2470	-

max HUH 224.6m

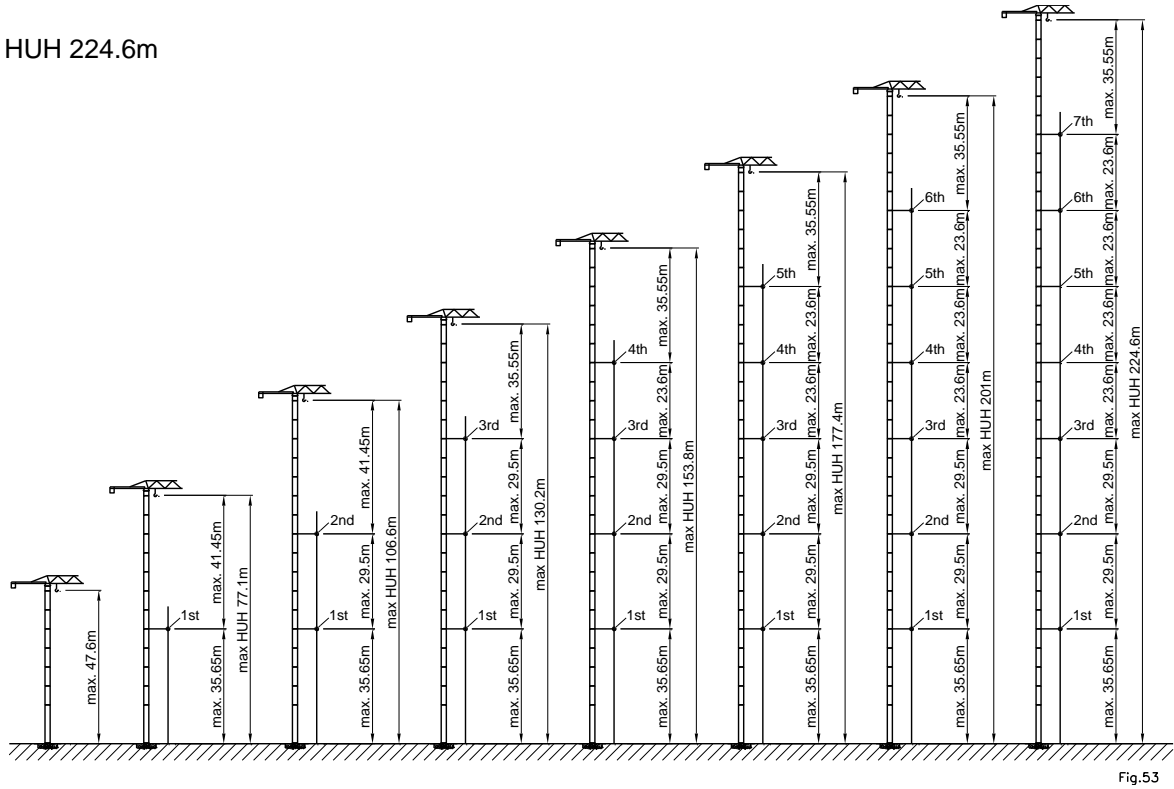


Fig.53

※ NOTES 상기 타워크레인 제원 및 사양은 사전통보 없이 변경 될 수 있음.