

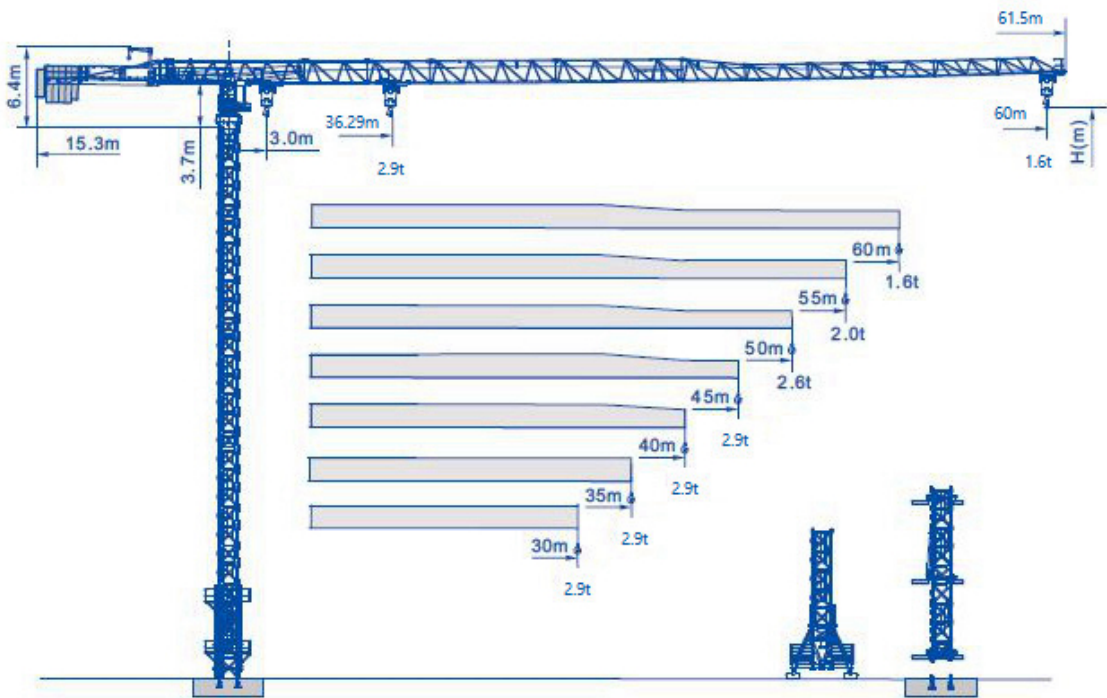
GENERAL SPECIFICATIONS

QP6016 GENERAL SPECIFICATIONS

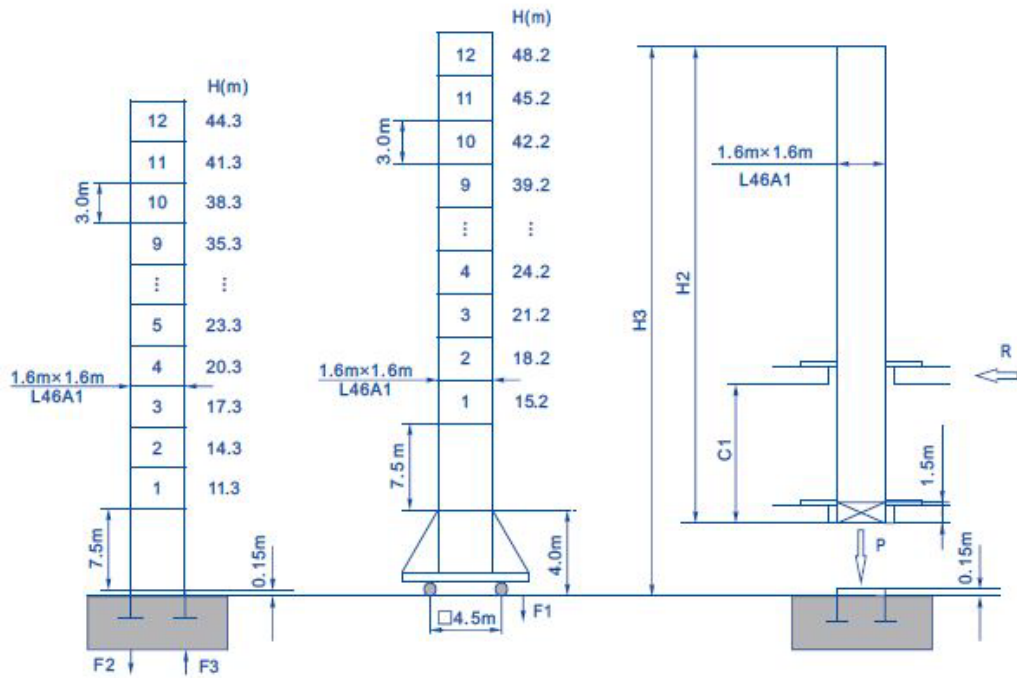
Main characters	Rated load torque kN.m	Min/max range (m)	Tip load (t)	Max load (t)	
	1250	3/60	1.6	2.9	
General working level	Usage level	Load status	Working level		
	U5	Q2	A5		
Mechanism working level	Hoist	Slewing	Trolley		
	M5	M5	M4		
Allowed wind pressure	Install/dismantle status	100 Pa			
	Working status	250 Pa			
	Non-working status (H is height above ground)	$H \leq 20m$	800 Pa		
		$20m < H \leq 100m$	1100 Pa		
$H > 100m$		1300 Pa			
Workig environment	Temprature	Altitude	Foundation ground bearing pressure		
	-20°C~+40°C	$\leq 1000m$	$\geq 200 Pa$		
Hoist height (m)	Fall	Stationary type	Anchorage type		
	2-Fall	43.65	133.65		
Hoist mechanism 30LVF15	Fall	a=2			
	Speed (m/min)	40	80		
	Load (t)	2.9	1.5		
	Motor	YZP2-180L-4 / 22kW			
	Wire rope	35Wx7- ϕ 12-1770	Capacity	400m	
Slewing mechanism RCV95	speed	0~0.7 r/min	Slewing angle	$\pm 540^\circ$	
	Motor	YTLEJ112L-0504F1/5.5kW	Stalling torque	2x95 N.m	
	Transmission rate	164	Mechanism gear	M10/z12/X0.32	
	Slewing table	011.45.1250	Table gear	M10/z144/X0.86	
Trolley machanism DVF95	Min range	3m	Speed	0~60 m/min	
	Motor	YTDVF112M1-4/4kW	Wire rope	6x19- ϕ 7.7-1770	

Telescoping mchanism	Speed		0.7 m/min		Pressure		35Mpa
	Cylinder		Locating distance		1600 x 2072		
Ballast	60m	55m	50m	45m	40m	35m	30m
	17t	15.5t	15t	14t	13t	11.5t	9.5t
Total power	35kW (telescoping mechanism is excluded)						

QP6016



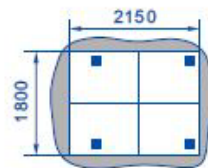
塔身反力
Masts Reactions



F2	●86t	■109t
F3	●54t	■78t
	45t	

F1	●60t	■71t
	50t	

R	22t
P	70.6t



C1	9
H2	43.5m
H3	134m

塔机工作状态风速不大于 20m/s
非工作状态风速不大于 42m/s

In-service wind speed up to 20m/s ,
Out-of-service wind speed up to 42m/s

*当实际内爬高度H3大于给定高度时, 请联系我们。
*When the actual height is greater than the given height,
please contact us.

载荷特性
Load Characteristics

Load diagram for 60m Jib

Working range (m)	3-36.29	37	38	39	40	42	45	47	50	52	55	57	60	
Load (t)	2-Fall	2.90	2.84	2.75	2.67	2.59	2.45	2.26	2.15	2.00	1.90	1.78	1.70	1.60

Load diagram for 55m Jib

Working range (m)	3-39.97	42	45	47	50	52	55	
Load (t)	2-Fall	2.90	2.74	2.53	2.41	2.24	2.14	2.00

Load diagram for 50/45/40/35/30m Jib

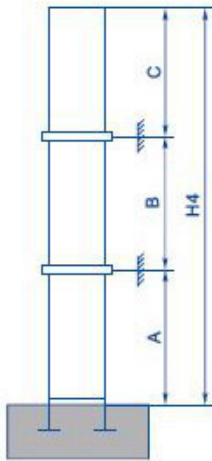
Working range (m)	3-45.45	46	47	48	49	50	
Load (t)	2-Fall	2.90	2.86	2.79	2.72	2.66	2.60

配重
Counterweight

起重量(m) Jib length	
配置种类 Type of ballast	A(3.5t)
	B(3.0t)
	C(0.5t)
配重重量(t) Weight of ballast	

60	55	50	45	40	35	30
4A+B	4A+3C	4A+2C	2A+2B+2C	2A+2B	3A+2C	A+2B
17.0	15.5	15.0	14.0	13.0	11.5	9.5

附着 Anchorages



臂长60米 Jib length 60m	n			
	1	2	3	4
A (m)	33.15			
MAST	L46A1			
n1	20	28	35	42
H4 (m)	67.65	91.65	112.65	133.65
n2	9	17	25	32
H5 (m)	33.15	57.15	81.15	102.15
B (m)	-	24	24	21
C (m)	34.5	34.5	31.5	31.5

*当实际附着高度H4大于给定高度时, 请联系我们。
 *When the actual height is greater than the given height, please contact us.
 n1 塔身节数量/Number of mast H5 附着锚固点距离地面距离/The height of the anchorage to floor
 n2 附着锚固点对应塔身节序号/The anchorage frame fixed points correspond to the mast number

机构特性 Mechanisms

机械性能 Mechanisms Specification						kw	
起升 Hoisting		30LVF15	m/min	40	80	400m	22
			t	2.9	1.5		
变幅 Trolleying		DVF95	m/min	0~60		4	
回转 Slewing		RCV95	r/min	0~0.7		2x4	
行走 Travelling		RT324	r/min	12.5~25		2X4.5	
电网/Power Supply				380V 50Hz / 440V 60Hz			
所需功率/Necessary Power				65KVA			
发电机组/Generator Sets				请向我方咨询/Consult us			