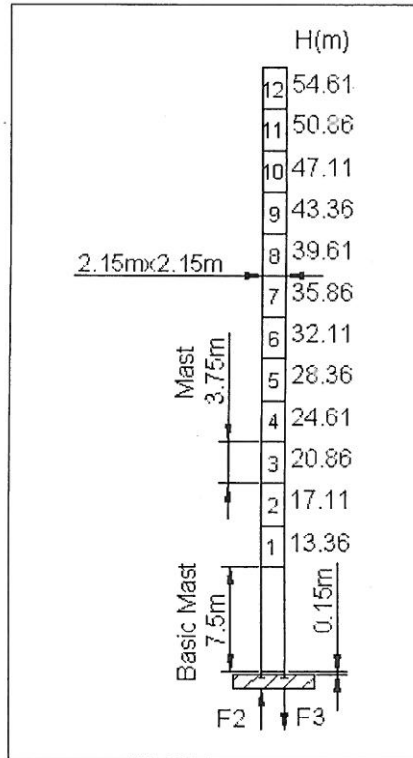


Load chart

	(ton)					
Radius	30m	35m	40m	45m	50m	55m
55m	2.9	2.44	2.06	1.77	1.54	1.35
50m	2.9	2.6	2.2	1.89	1.65	
45m	2.9	2.67	2.26	1.95		
40m	2.9	2.77	2.35			
35m	2.9	2.8				
30m	2.9					

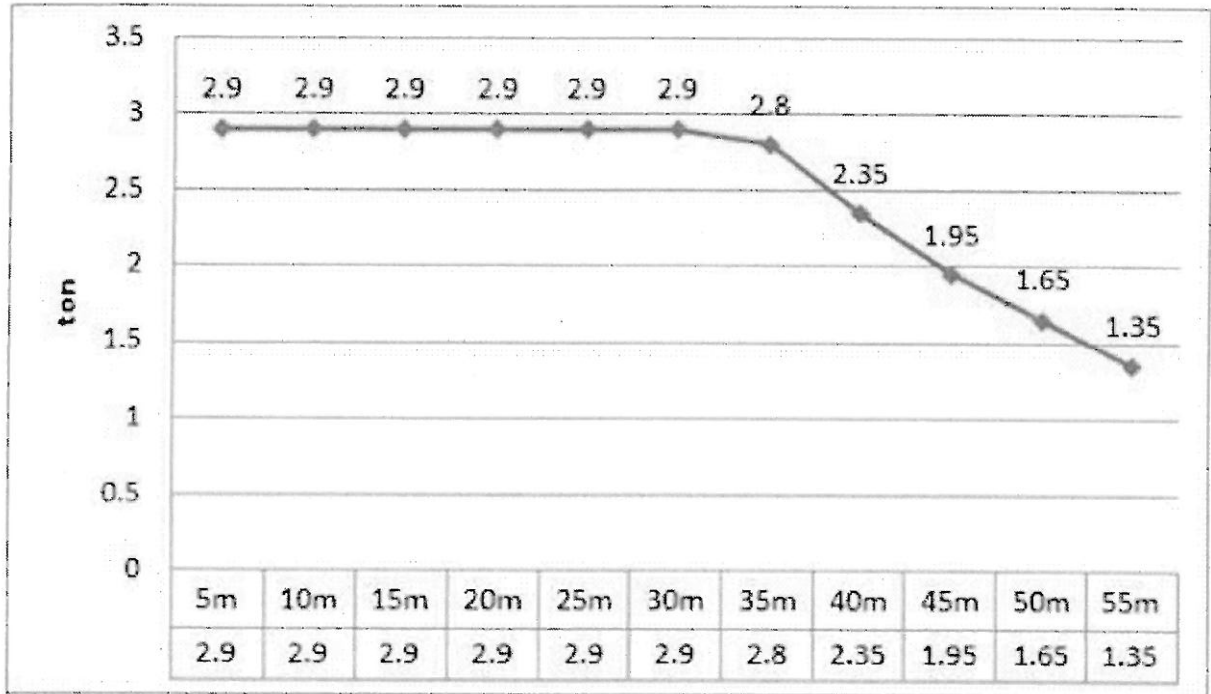
H(m): H.U.H



Main Characteristic Parameter of Crane Mechanism

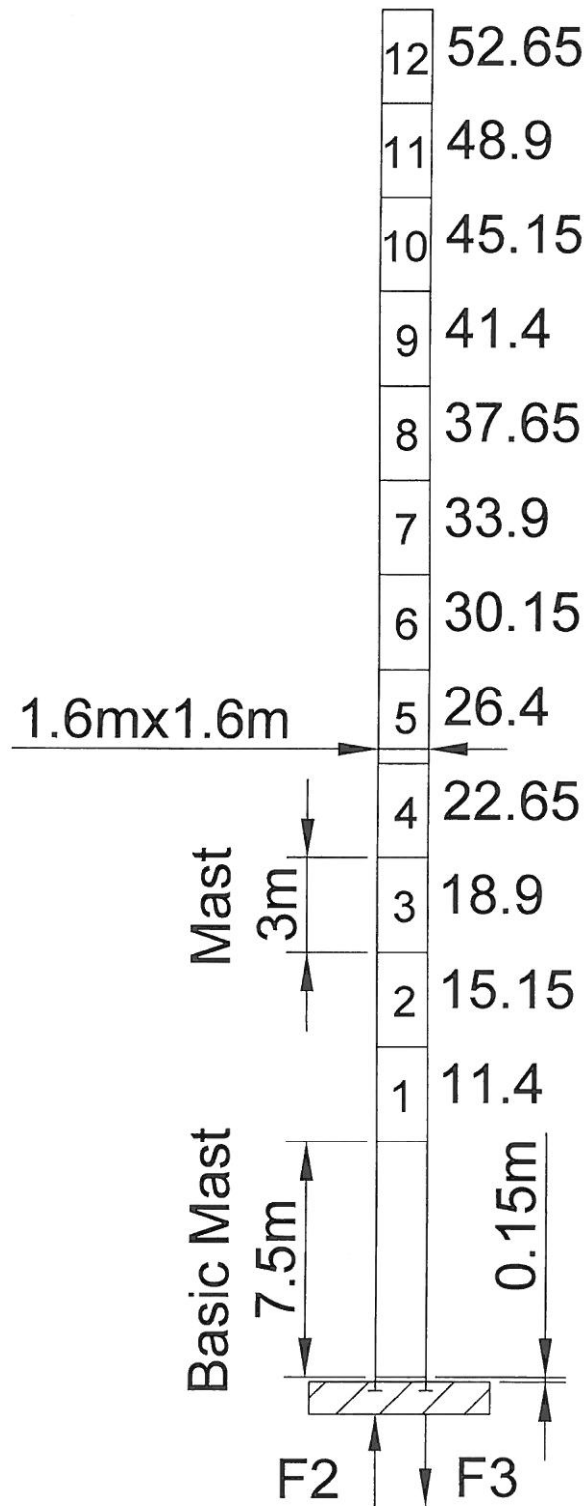
Mechanism		2Fall		Rope length	Motor (kW)
		m/min	ton		
Hoist	24PQC15	0-7.8	2.9	400m	24 / 24 / 5.5
		0-36	2.9		
		0-72	1.4		
Trolley	DTC55	0-60 m/min			55 Nm
Slewing	4RFCV	0-0.7 rpm			4Kw×2

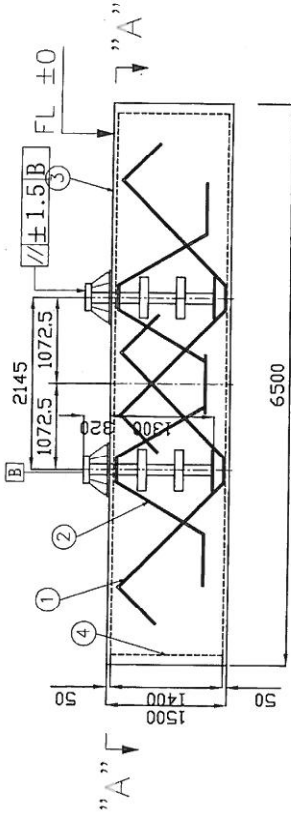
# LOAD CHART



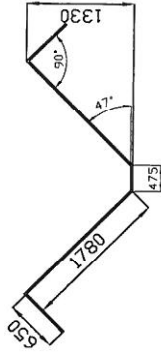
Radius	30m	35m	40m	45m	50m	55m
55m	2.9	2.44	2.06	1.77	1.54	1.35
50m	2.9	2.6	2.2	1.89	1.65	
45m	2.9	2.67	2.26	1.95		
40m	2.9	2.77	2.35			
35m	2.9	2.8				
30m	2.9					

# MAST 설치 개략도 (Free standing)

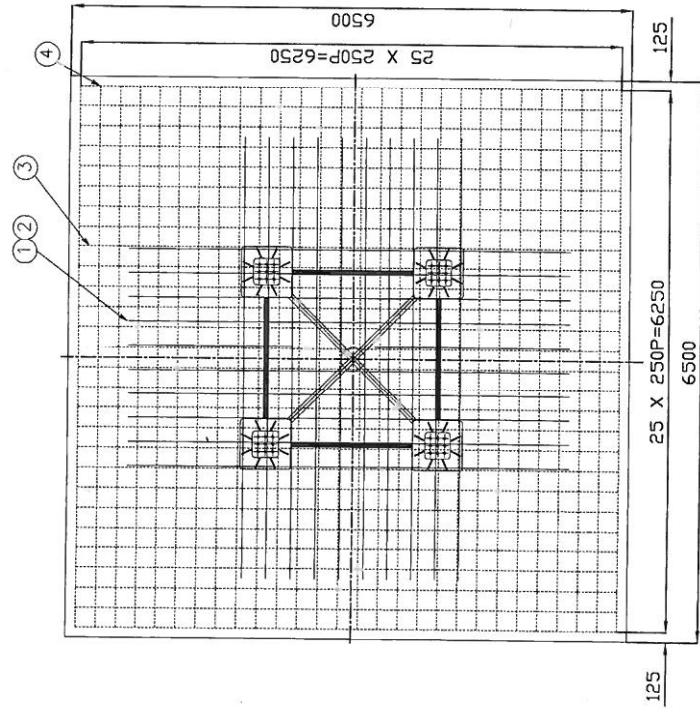
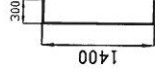




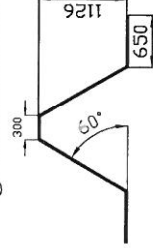
①  $\phi 25 \times 5335L - 40EA$



④  $\phi 22 \times 2000L - 112EA$



②  $\phi 25 \times 5000L - 40EA$



③  $\phi 22 \times 6250L$



- \* CONCRETE SPECIFIC WEIGHT : 2400KG/M<sup>3</sup>
- \* SOIL PRESSURE : 20TON/M<sup>2</sup>
- \* FOUNDATION WEIGHT : 176.4TON

ANCHOR 설치시 주의사항

1. 버림 콘크리트 타설후 ANCHOR를 가설치한 상태에서 BASIC MAST와 결합되는 4개소 PLATE의 레벨을 정확히 맞추고 콘크리트 타설이나 외부의 힘에 의해 움직이지 않도록 충분한 보강을 한 후, 레벨을 필히 재검사해야 한다.

NO	DESCRIPTION	SIZE	MAT'L	Q'TY	REMARK
1	REINFORCING S.BAR	$\phi 25 \times 5285L$	SD40	40	
2	REINFORCING S.BAR	$\phi 25 \times 5000L$	SD40	40	
3	REINFORCING S.BAR	$\phi 22 \times 6250L$	SD40	112	
4	REINFORCING S.BAR	$\phi 22 \times 2000L$	SD40	112	
TITLE: 기초도					
DWG	DSD	CED	CED	A P D	SCALE
					PROJECTION
					DWG NO
					DATE
					STT133K
YONGMAO					

VIEW "A-A"